

XOJAY



KITCHEN
WARDROBES
SMART CONTROL
PANORAMA WINDOWS
SOLAR CONTROL GLASS
COMMUNITY POOL
COMMUNITY GYM
SECURITY SYSTEM
ART WALL
BLINDS
AC/HEATING
(M) MOTORIZED WINDOW



DATE: 25/04/2025

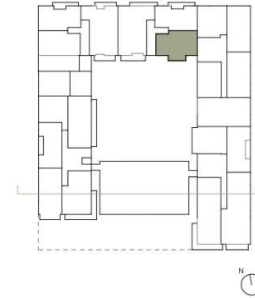
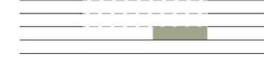
*This document is informative, it has not contractual value until the structure and installations are completely defined.

****MEASUREMENTS MAY CHANGE IN THE FURTHER PLANNING PHASE**

*****THIS DOCUMENT, INCLUDING USABLE AREAS AND GROSS FLOOR AREAS, IS ONLY TEMPORARY AND NOT FINAL DUE TO MUNICIPAL CHANGES AND CONSTRUCTION DESIGN. IN CASE OF DISCREPANCY THE FLOOR PLAN WILL PREVAIL.**

XOPARQ
The Palma Residences

1'405'000 EUR



V.1F APARTMENT_TRIPLEX

INDOOR USABLE FLOOR AREA	301.50
BASEMENT	150.70
INDOOR GROSS FLOOR AREA 0GF	1.27.66
INDOOR GROSS FLOOR AREA 1FST	86.65
GROSS FLOOR AREA	365.01
GFA + COMMON AREAS	440.06

V.LF- USABLE FLOOR AREA

ROOM	SURFACE
1FST FLOOR	
BATHROOM 2	4.36
BEDROOM 2	11.13
ENTRANCE	5.58
BEDROOM 1 / CLOSET	38.37
BATHROOM 1	8.71
GROUND FLOOR	
LIVING DINING-KITCHEN	57.70
STAIRCASE	11.95
LAUNDRY	3.50
TOILET	5.20
BEDROOM 3	16.53
BATHROOM 3	7.26
HALLWAY	2.60
BASEMENT 1	
ST. 87a	60.37
HALLWAY	3.60
STAIRS	8.88
ST. 87b	3.65
PARKING	52.11
TOTAL USABLE FLOOR AREA	301.50

APARTMENT

1.F

XOJAY



KITCHEN
WARDROBES
SMART CONTROL
PANORAMA WINDOWS
SOLAR CONTROL GLASS
COMMUNITY POOL
COMMUNITY GYM
SECURITY SYSTEM
ART WALL
BLINDS
AC/HEATING
(M) MOTORIZED WINDOW

XOPARQ CW



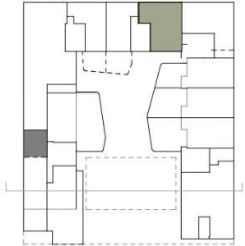
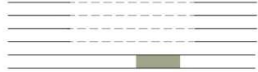
DATE: 25/04/2025

*This document is informative, it has not contractual value until the structure and installations are completely defined.

****MEASUREMENTS MAY CHANGE IN THE FURTHER PLANNING PHASE**

*****THIS DOCUMENT, INCLUDING USABLE AREAS AND GROSS FLOOR AREAS, IS ONLY TEMPORARY AND NOT FINAL DUE TO MUNICIPAL CHANGES AND CONSTRUCTION DESIGN. IN CASE OF DISCREPANCY THE FLOOR PLAN WILL PREVAIL.**

XOPARQ
The Palma Residences



V.1F-APARTMENT_TRIPLEX

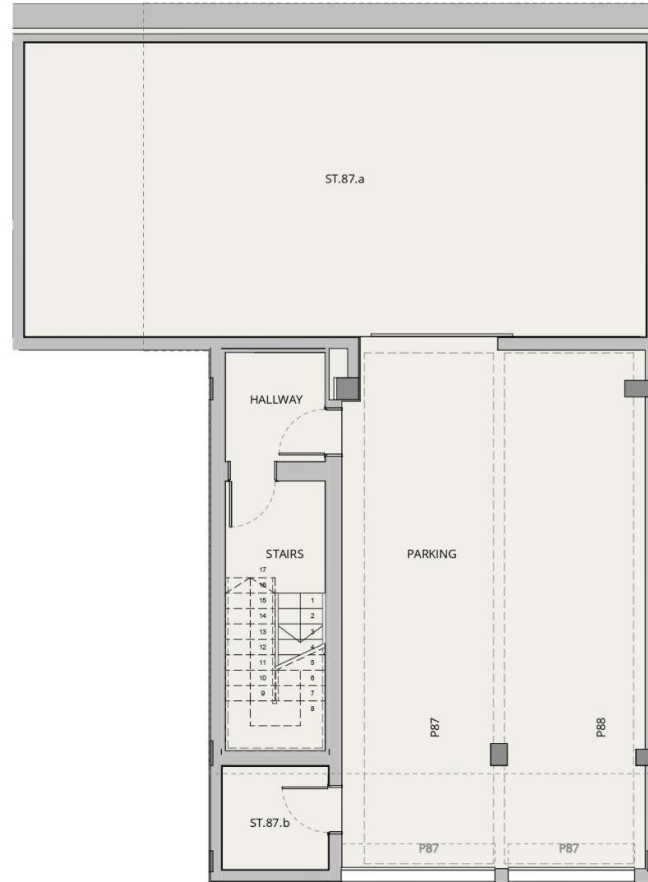
INDOOR USABLE FLOOR AREA	301.50
BASEMENT	150.70
INDOOR GROSS FLOOR AREA (IGF)	127.66
INDOOR GROSS FLOOR AREA 1ST	86.65
GROSS FLOOR AREA	365.01
GFA + COMMON AREAS	440.06

V.1F- USABLE FLOOR AREA

ROOM	SURFACE
1ST FLOOR	
BATHROOM 2	4.36
BEDROOM 2	11.13
ENTRANCE	5.58
BEDROOM 1 / CLOSET	38.37
BATHROOM 1	8.71
GROUND FLOOR	
LIVING-DIVING-KITCHEN	57.70
STAIRCASE	11.95
LAUNDRY	3.50
TOILET	5.20
BEDROOM 3	16.53
BATHROOM 3	7.26
HALLWAY	2.60
BASEMENT 1	
ST.87.a	60.37
HALLWAY	3.60
STAIRS	8.88
ST.87.b	3.65
PARKING	52.11
TOTAL USABLE FLOOR AREA	301.50

APARTMENT V.1F - GF

XOJAY



KITCHEN
WARDROBES
SMART CONTROL
PANORAMA WINDOWS
SOLAR CONTROL GLASS
COMMUNITY POOL
COMMUNITY GYM
SECURITY SYSTEM
ART WALL
BLINDS
AC/HEATING
(M) MOTORIZED WINDOW

XOPARQ CW

0m 1m 2m 3m 4m

DATE: 25/04/2025

*This document is informative, it has not contractual value until the structure and installations are completely defined

****MEASUREMENTS MAY CHANGE IN THE FURTHER PLANNING PHASE**

*****THIS DOCUMENT, INCLUDING USABLE AREAS AND GROSS FLOOR AREAS, IS ONLY TEMPORARY AND NOT FINAL DUE TO MUNICIPAL CHANGES AND CONSTRUCTION DESIGN. IN CASE OF DISCREPANCY THE FLOOR PLAN WILL PREVAIL.**

XOPARQ
The Palma Residences



V.1F APARTMENT, TRIPLEX

INDOOR USABLE FLOOR AREA	301.50
BASEMENT	150.70
INDOOR GROSS FLOOR AREA 0GF	127.66
INDOOR GROSS FLOOR AREA 1FST	86.65
GROSS FLOOR AREA	365.01
GFA + COMMON AREAS	440.06

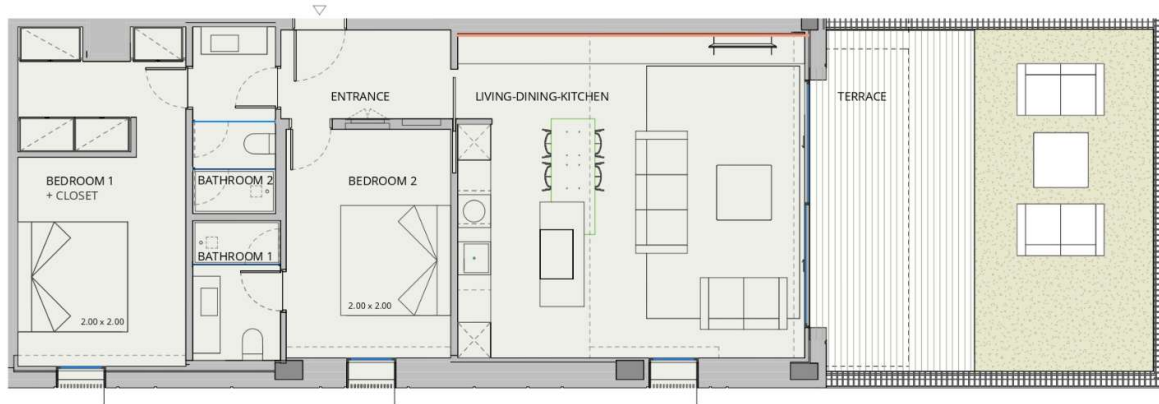
V.I.F. USABLE FLOOR AREA

ROOM	SURFACE
1FST FLOOR	
BATHROOM 2	4.36
BEDROOM 2	11.13
ENTRANCE	5.58
BEDROOM 1 / CLOSET	38.37
BATHROOM 1	8.71
GROUND FLOOR	
LIVING-DINING-KITCHEN	57.70
STAIRCASE	11.95
LAUNDRY	3.50
TOILET	5.20
BEDROOM 3	16.53
BATHROOM 3	7.26
HALLWAY	2.60
BASEMENT 1	
ST.87.a	60.37
HALLWAY	3.60
STAIRS	8.88
ST.87.b	3.65
PARKING	52.11
TOTAL USABLE FLOOR AREA	301.50

APARTMENT

V.1F
BASEMENT

XOJAY



KITCHEN
WARDROBES
SMART CONTROL
PANORAMA WINDOWS
SOLAR CONTROL GLASS
COMMUNITY POOL
COMMUNITY GYM
SECURITY SYSTEM
ART WALL
BLINDS
AC/HEATING
(M) MOTORIZED WINDOW

XOPARQ CW



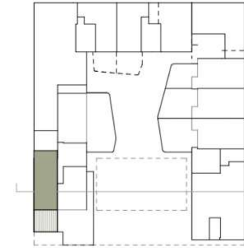
DATE: 25/04/2025

*This document is informative, it has not contractual value until the structure and installations are completely defined

****MEASUREMENTS MAY CHANGE IN THE FURTHER PLANNING PHASE**

*****THIS DOCUMENT, INCLUDING USABLE AREAS AND GROSS FLOOR AREAS, IS ONLY TEMPORARY AND NOT FINAL DUE TO MUNICIPAL CHANGES AND CONSTRUCTION DESIGN. IN CASE OF DISCREPANCY THE FLOOR PLAN WILL PREVAIL.**

1'115'000 EUR



V OR APARTMENT

INDOOR USABLE FLOOR AREA	81.73
INDOOR GROSS FLOOR AREA	99.51
TERRACE	41.94
GROSS FLOOR AREA	141.45
GFA + COMMON AREAS	170.53

V OR - USABLE FLOOR AREA

ROOM	SURFACE
LIVING-DINING-KITCHEN	37.16
BEDROOM 1	18.04
BATHROOM 1	4.02
BEDROOM 2	12.44
BATHROOM 2	5.07
ENTRANCE	4.99
TOTAL USABLE FLOOR AREA	81.73

APARTMENT

0.R

XOJAY



KITCHEN
WARDROBES
SMART CONTROL
PANORAMA WINDOWS
SOLAR CONTROL GLASS
COMMUNITY POOL
COMMUNITY GYM
SECURITY SYSTEM
ART WALL
BLINDS
AC/HEATING
(M) MOTORIZED WINDOW

XOPARQ CW



DATE: 25/04/2025

*This document is informative, it has not contractual value until the structure and installations are completely defined

****MEASUREMENTS MAY CHANGE IN THE FURTHER PLANNING PHASE**

*****THIS DOCUMENT, INCLUDING USABLE AREAS AND GROSS FLOOR AREAS, IS ONLY TEMPORARY AND NOT FINAL DUE TO MUNICIPAL CHANGES AND CONSTRUCTION DESIGN. IN CASE OF DISCREPANCY THE FLOOR PLAN WILL PREVAIL.**

XOPARQ
The Palma Residences

740'000 EUR



V.1B APARTMENT

INDOOR USABLE FLOOR AREA	62.43
INDOOR GROSS FLOOR AREA	77.75
TERRACE	10.45
GROSS FLOOR AREA	88.19
GFA + COMMON AREAS	106.33

V.1B- USABLE FLOOR AREA

ROOM	SURFACE
LIVING-DINING-KITCHEN	25.87
BEDROOM 1	10.18
BATHROOM 1	7.37
BEDROOM 2	10.11
BATHROOM 2	3.27
ENTRANCE	5.62
TOTAL USABLE FLOOR AREA	62.43

APARTMENT

1.B

XOJAY



KITCHEN
WARDROBES
SMART CONTROL
PANORAMA WINDOWS
SOLAR CONTROL GLASS
COMMUNITY POOL
COMMUNITY GYM
SECURITY SYSTEM
ART WALL
BLINDS
AC/HEATING
(M) MOTORIZED WINDOW

XOPARQ CW

0m 1m 2m 3m 4m

DATE: 25/04/2025

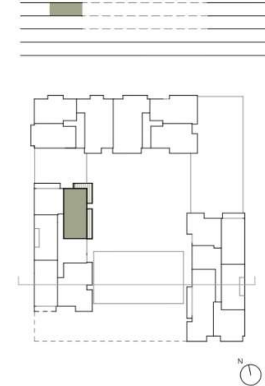
*This document is informative, it has not contractual value until the structure and installations are completely defined

****MEASUREMENTS MAY CHANGE IN THE FURTHER PLANNING PHASE**

*****THIS DOCUMENT, INCLUDING USABLE AREAS AND GROSS FLOOR AREAS, IS ONLY TEMPORARY AND NOT FINAL DUE TO MUNICIPAL CHANGES AND CONSTRUCTION DESIGN. IN CASE OF DISCREPANCY THE FLOOR PLAN WILL PREVAIL.**

XOPARQ
The Palma Residences

1'225'000 EUR



V.3U APARTMENT

INDOOR USABLE FLOOR AREA	73.53
INDOOR GROSS FLOOR AREA	94.75
TERRACE 01	13.99
TERRACE 02	12.70
GROSS FLOOR AREA	121.45
GFA + COMMON AREAS	146.42

V.3U- USABLE FLOOR AREA

ROOM	SURFACE
LIVING-DINING-KITCHEN	37.82
BEDROOM 1	14.38
BATHROOM 1	5.13
BEDROOM 2	11.43
BATHROOM 2	4.77
ENTRANCE	Habitación redundante
TOTAL USABLE FLOOR AREA	73.53

APARTMENT

3.U

XOJAY



KITCHEN
WARDROBES
SMART CONTROL
PANORAMA WINDOWS
SOLAR CONTROL GLASS
COMMUNITY POOL
COMMUNITY GYM
SECURITY SYSTEM
ART WALL
BLINDS
AC/HEATING
MOTORIZED WINDOW

XOPARQ CW

0m 1m 2m 3m 4m

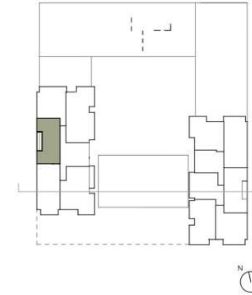
DATE: 25/04/2025

*This document is informative, it has not contractual value until the structure and installations are completely defined

****MEASUREMENTS MAY CHANGE IN THE FURTHER PLANNING PHASE**

*****THIS DOCUMENT, INCLUDING USABLE AREAS AND GROSS FLOOR AREAS, IS ONLY TEMPORARY AND NOT FINAL DUE TO MUNICIPAL CHANGES AND CONSTRUCTION DESIGN. IN CASE OF DISCREPANCY THE FLOOR PLAN WILL PREVAIL.**

990'000 EUR



V.45 APARTMENT

INDOOR USABLE FLOOR AREA	65.49
INDOOR GROSS FLOOR AREA	78.27
TERRACE	7.85
GROSS FLOOR AREA	86.12
GFA + COMMON AREAS	103.82

V.45- USABLE FLOOR AREA

ROOM	SURFACE
LIVING-DINING-KITCHEN	28.56
BEDROOM 1	12.09
BATHROOM 1	5.57
BEDROOM 2	14.39
BATHROOM 2	3.35
HALLWAY	1.53
TOTAL USABLE FLOOR AREA	65.49

APARTMENT

4.5