

ASPIRZ

BY **DANUBE**

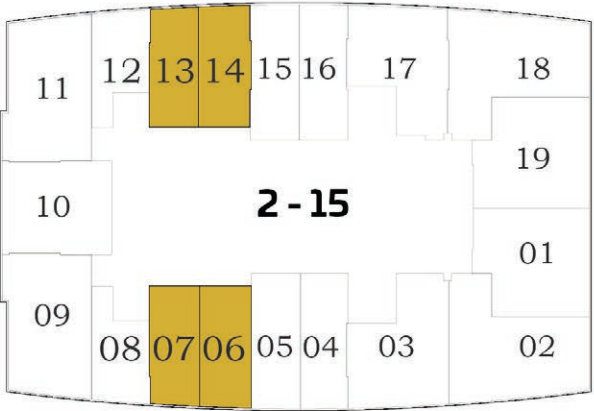
FLOOR PLANS - OFFICES



STANDARD OFFICE - A



Floor



AREA (Sq.Ft)

Office
349 to 381

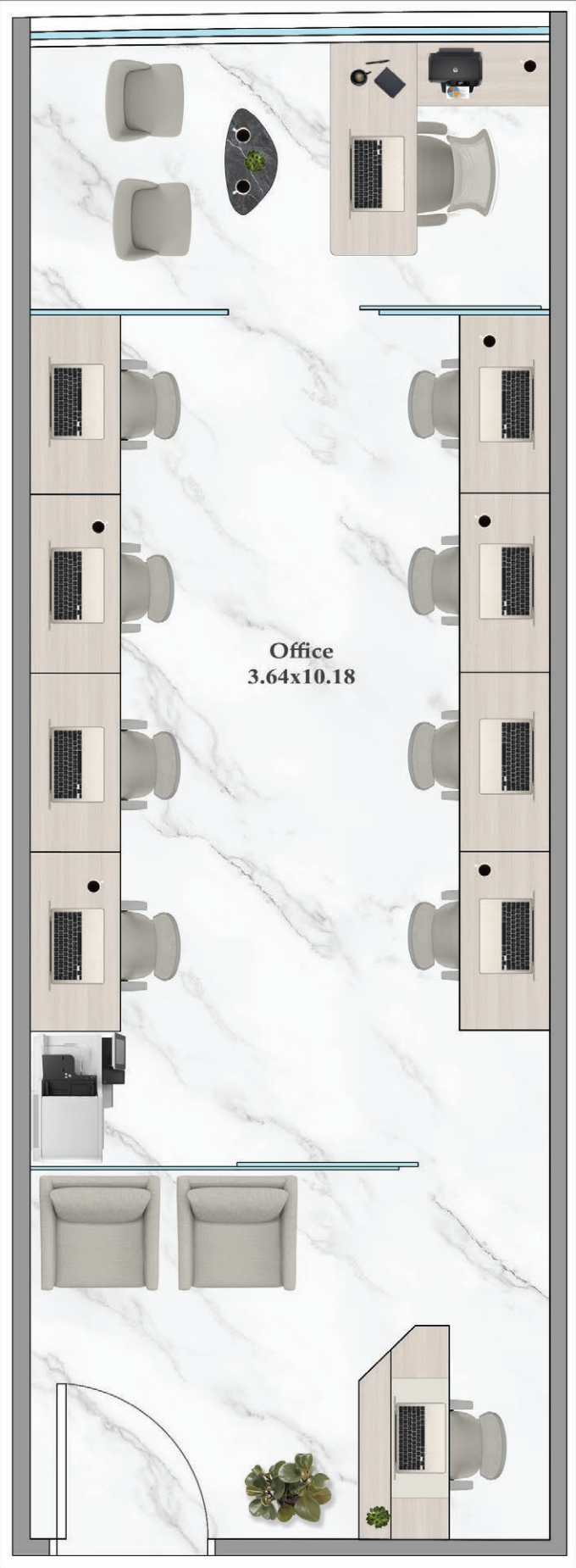
OFFICE FEATURES :

- ✓ Manager's Cabin
- ✓ 10 -12 Workstations
- ✓ Reception
- ✓ Visitor's Zone

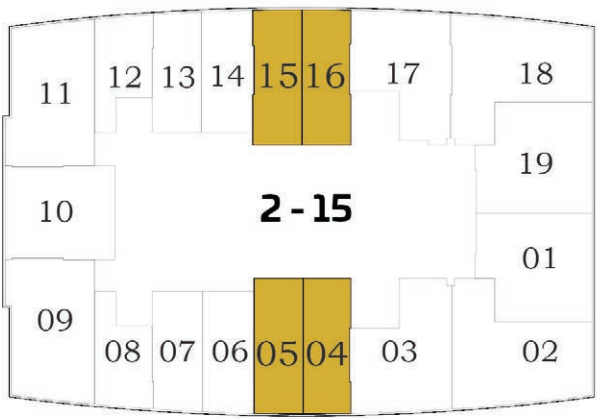
ASPIRZ FEATURES :

- ✓ Boardroom
- ✓ Restroom
- ✓ Reception
- ✓ 15+ Premium Amenities
- ✓ Valet Services
- ✓ Shuttle to Metro

STANDARD OFFICE - B



Floor



AREA (Sq.Ft)

Office
383 to 401

OFFICE FEATURES :

- ✓ Manager's Cabin
- ✓ 10 - 12 Workstations
- ✓ Reception
- ✓ Visitor's Zone

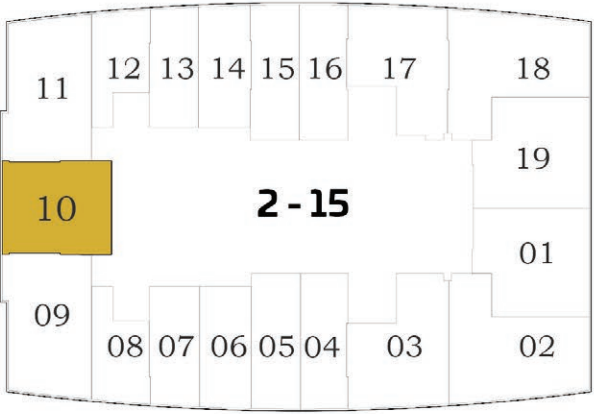
ASPIRZ FEATURES :

- ✓ Boardroom
- ✓ Restroom
- ✓ Reception
- ✓ 15+ Premium Amenities
- ✓ Valet Services
- ✓ Shuttle to Metro

EXECUTIVE OFFICE - A



Floor



AREA (Sq.Ft)

Office
624

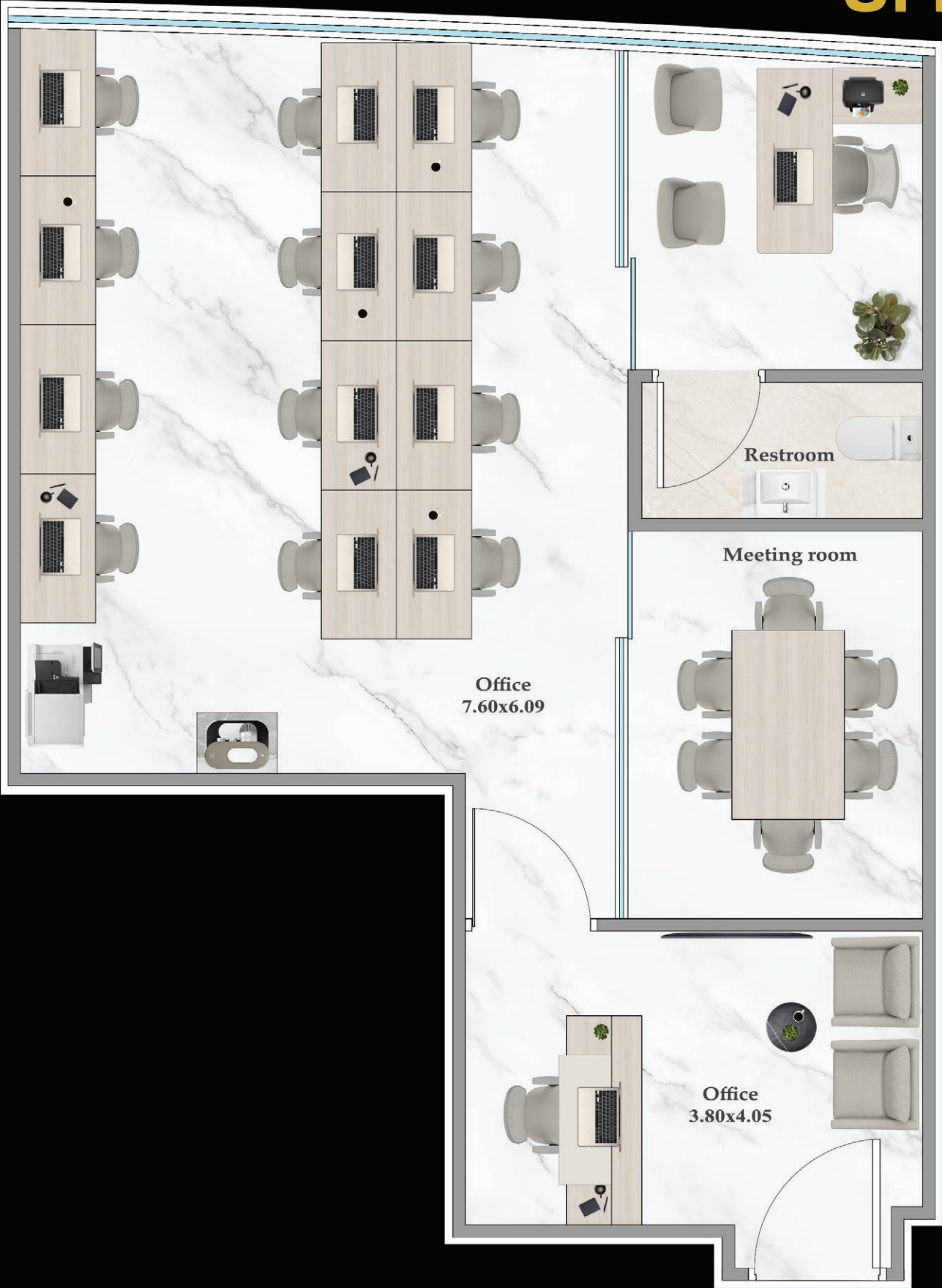
OFFICE FEATURES :

- ✓ Manager's Cabin
- ✓ 18 - 20 Workstations
- ✓ Reception
- ✓ Visitor's Zone
- ✓ Coffee Station
- ✓ Restroom

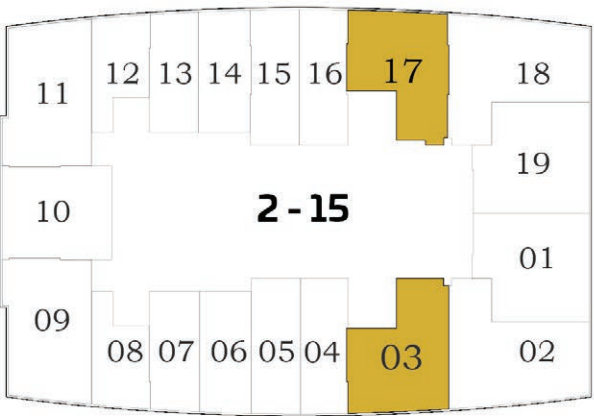
ASPIRZ FEATURES :

- ✓ Boardroom
- ✓ Restroom
- ✓ Reception
- ✓ 15+ Premium Amenities
- ✓ Valet Services
- ✓ Shuttle to Metro

EXECUTIVE OFFICE - B



Floor



AREA (Sq.Ft)

Office
637 to 664

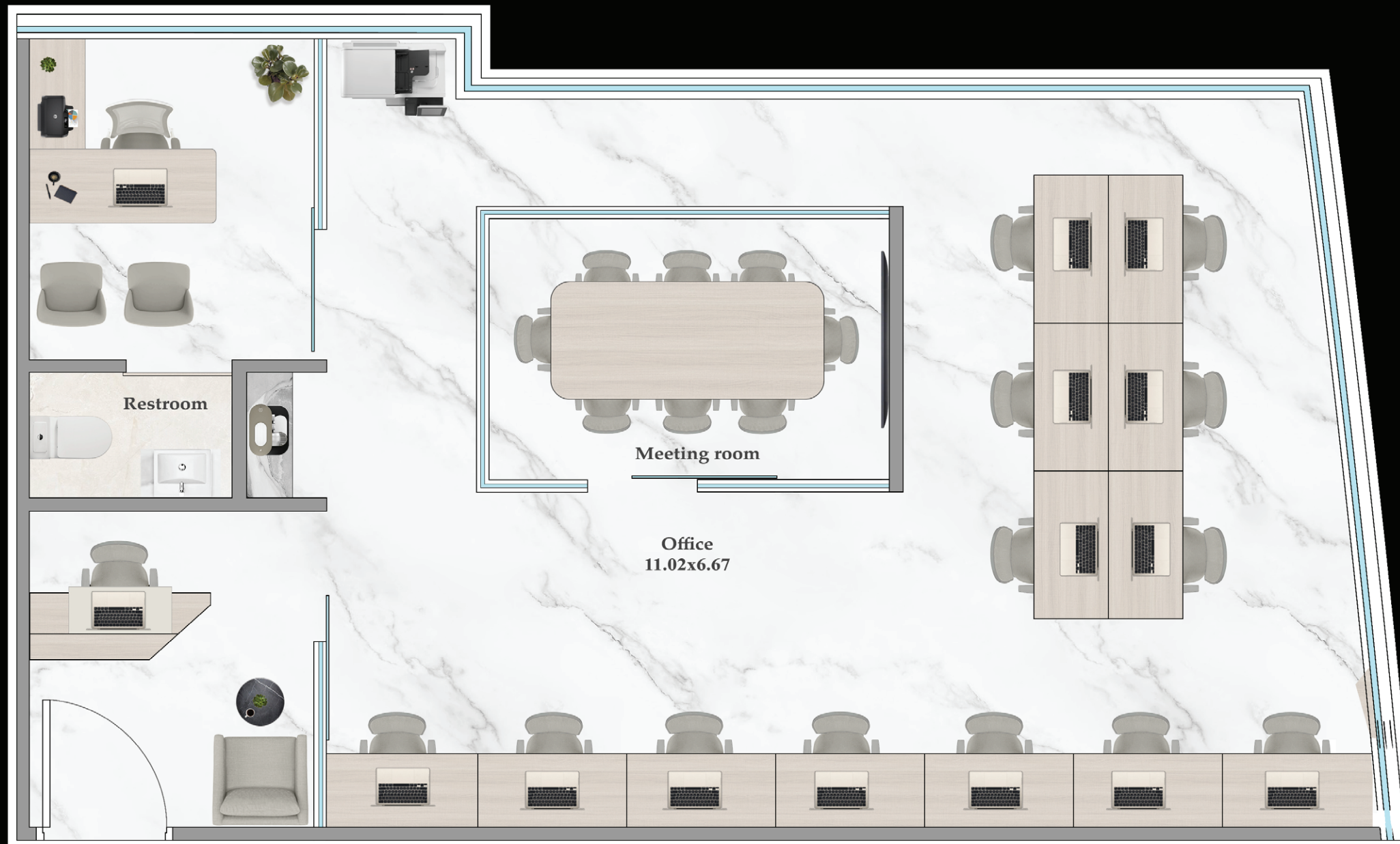
OFFICE FEATURES :

- ☑ Manager's Cabin
- ☑ 14 - 16 Workstations
- ☑ Meeting Room
- ☑ Reception
- ☑ Visitor's Zone
- ☑ Coffee Station
- ☑ Restroom

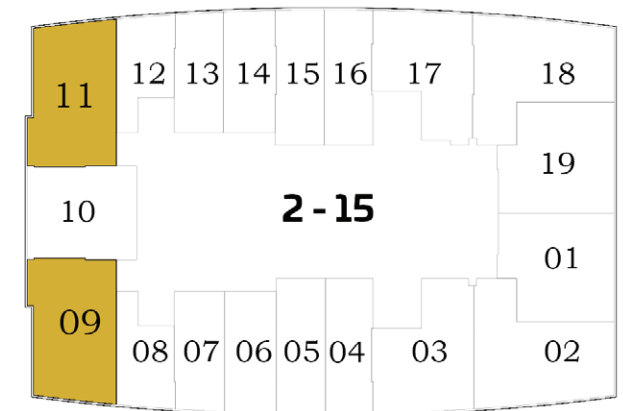
ASPIRZ FEATURES :

- ☑ Boardroom
- ☑ Restroom
- ☑ Reception
- ☑ 15+ Premium Amenities
- ☑ Valet Services
- ☑ Shuttle to Metro

PREMIER OFFICE - A



Floor



AREA (Sq.Ft)

Office
726 to 736

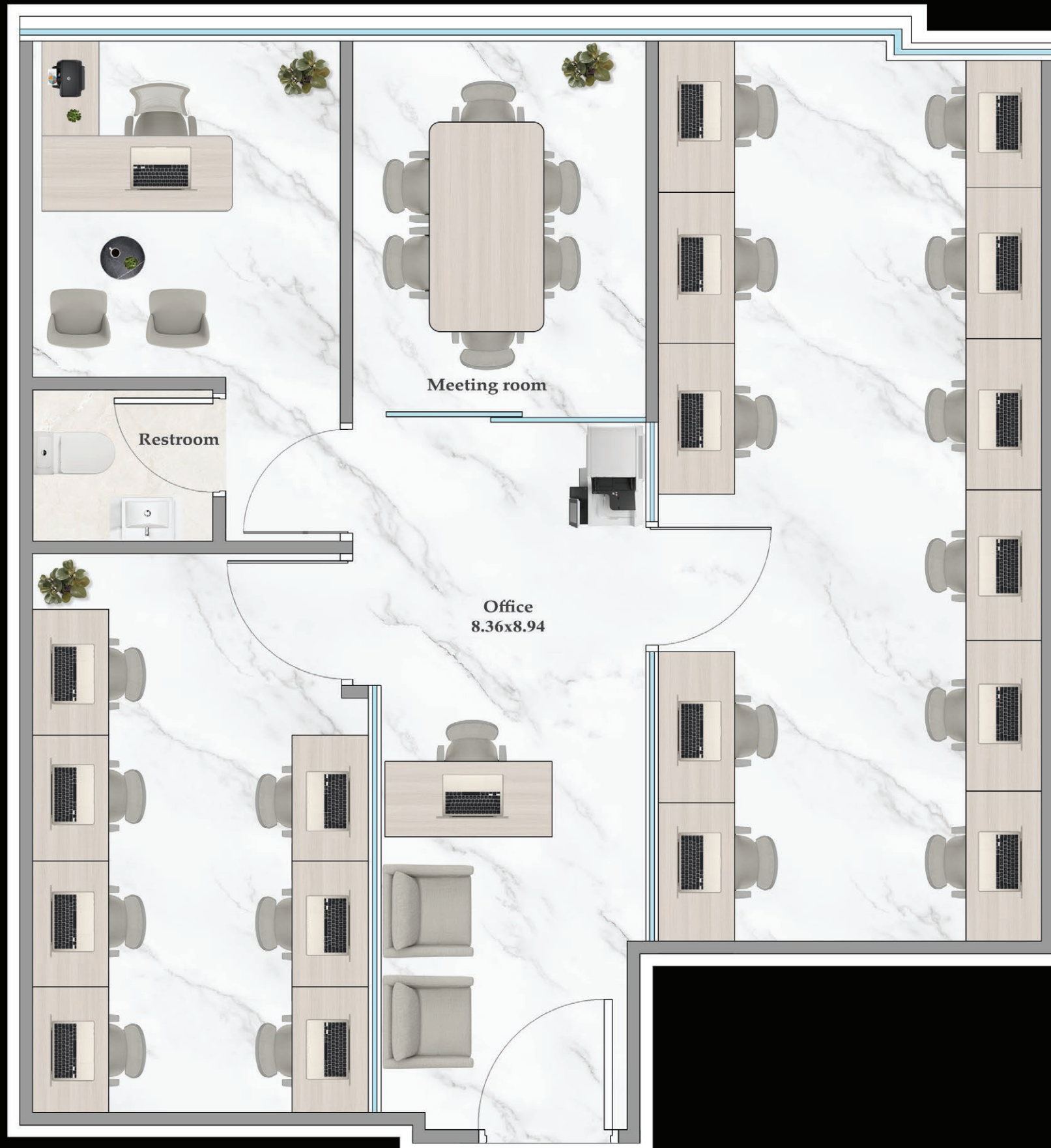
OFFICE FEATURES :

- ☒ Manager's Cabin
- ☒ 15 - 17 Workstations
- ☒ Meeting Room
- ☒ Reception
- ☒ Visitor's Zone
- ☒ Coffee Station
- ☒ Restroom

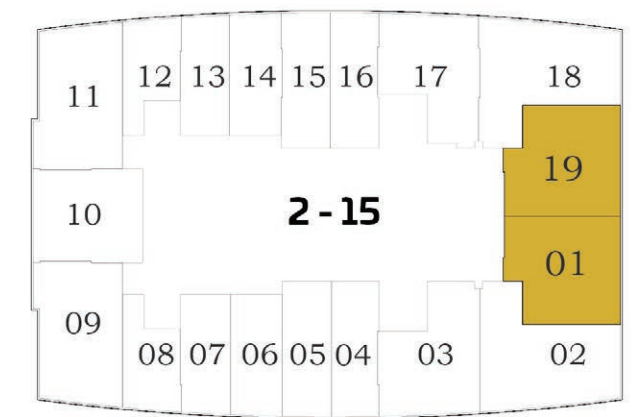
ASPIRZ FEATURES :

- ☒ Boardroom
- ☒ Restroom
- ☒ Reception
- ☒ 15+ Premium Amenities
- ☒ Valet Services
- ☒ Shuttle to Metro

PREMIER OFFICE - B



Floor



AREA (Sq.Ft)

Office
727 to 747

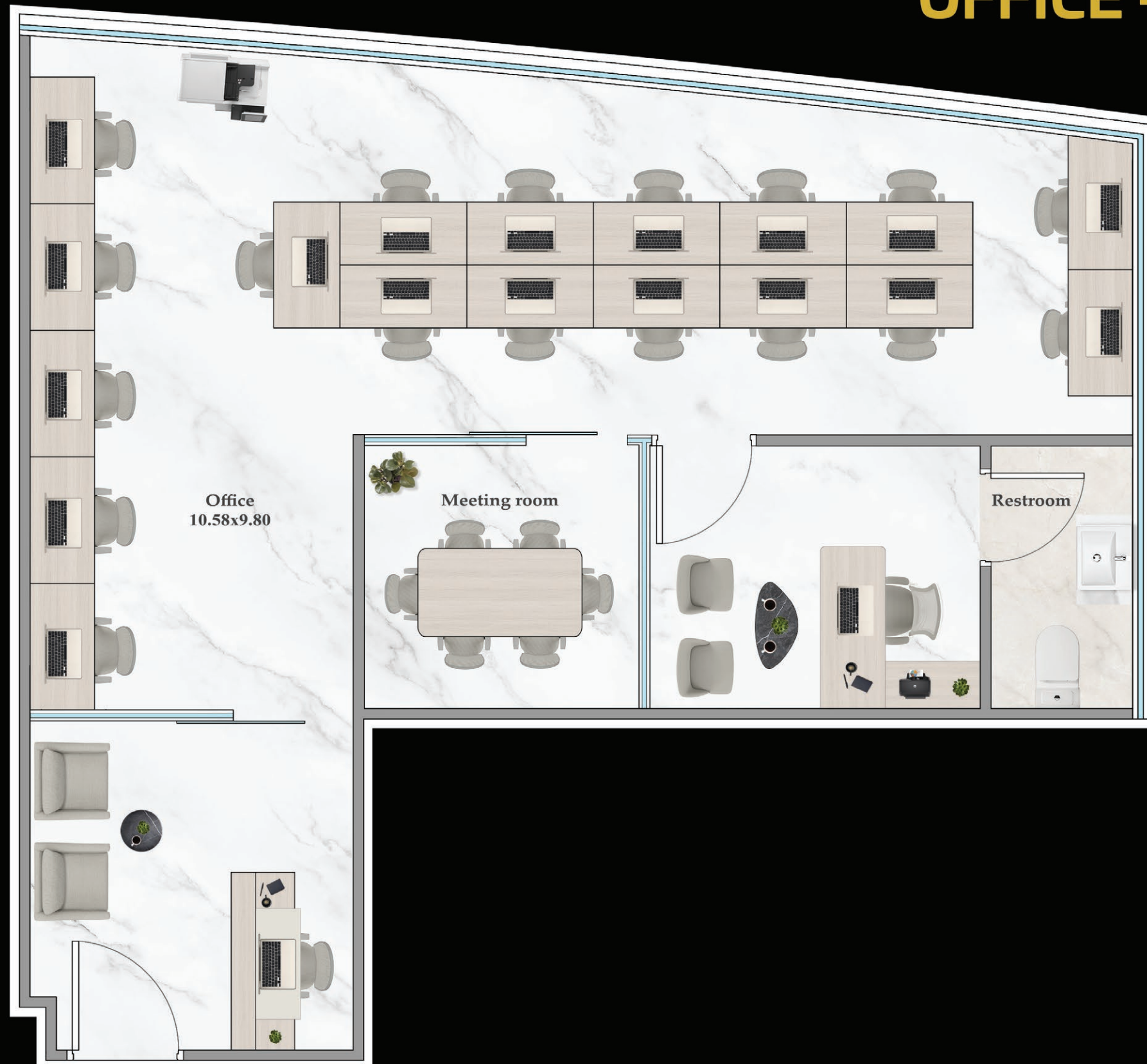
OFFICE FEATURES :

- ☑ Manager's Cabin
- ☑ 20 - 22 Workstations
- ☑ Meeting Room
- ☑ Reception
- ☑ Visitor's Zone
- ☑ Restroom

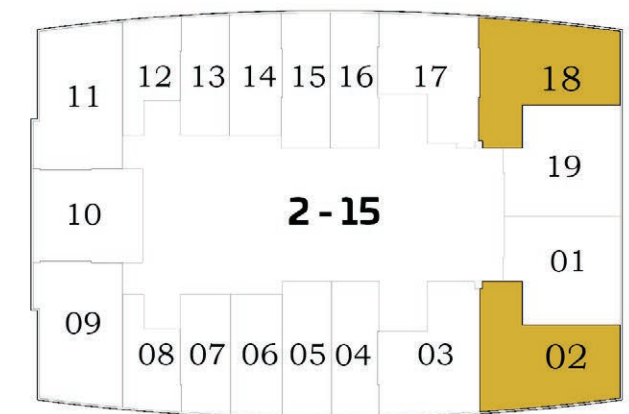
ASPIRZ FEATURES :

- ☑ Boardroom
- ☑ Restroom
- ☑ Reception
- ☑ 15+ Premium Amenities
- ☑ Valet Services
- ☑ Shuttle to Metro

PREMIER OFFICE - C



Floor



AREA (Sq.Ft)

Office
794 to 801

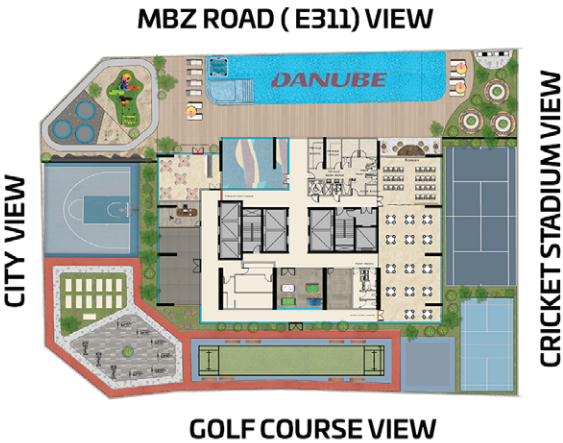
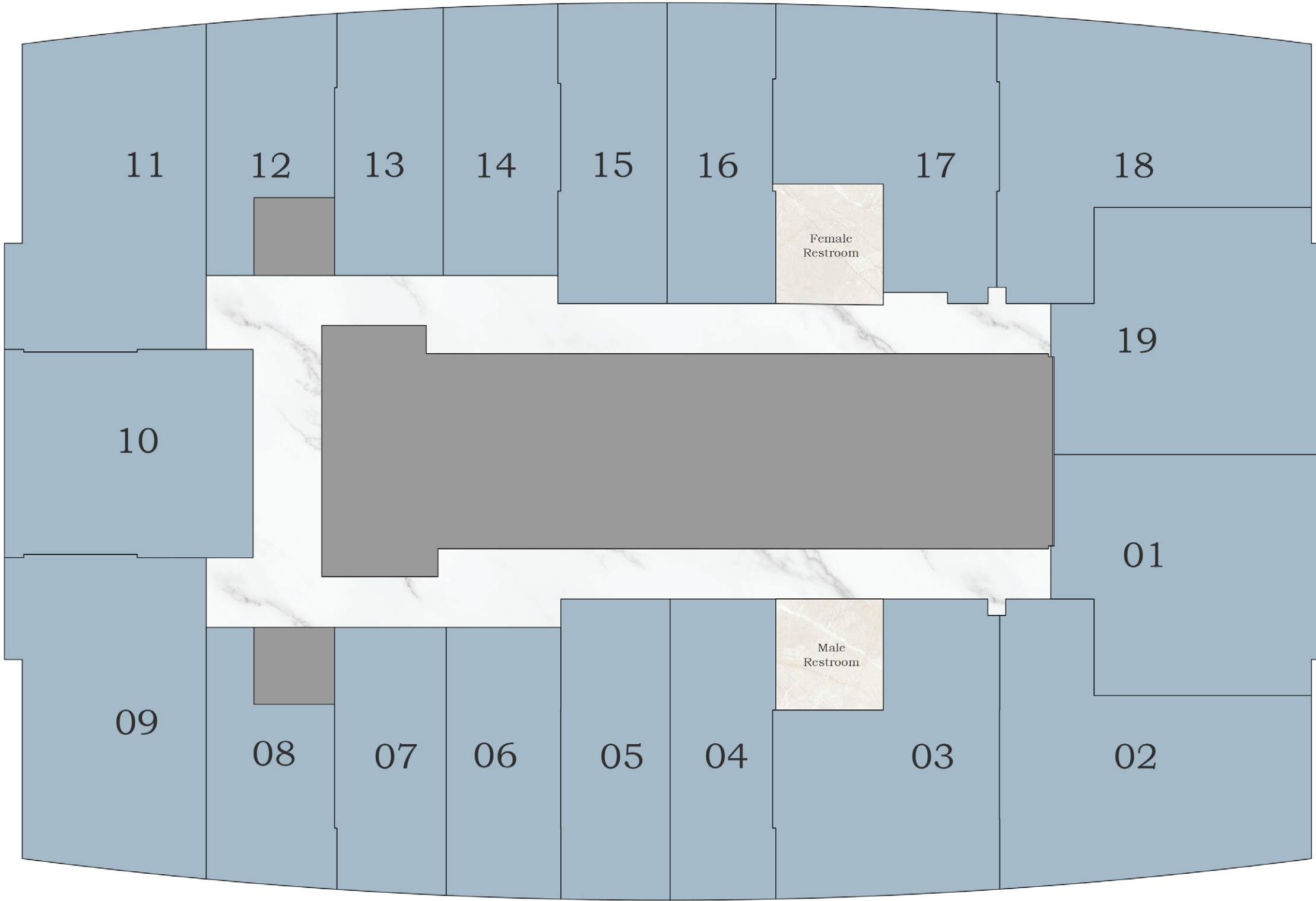
OFFICE FEATURES :

- ☒ Manager's Cabin
- ☒ 20 - 22 Workstations
- ☒ Meeting Room
- ☒ Reception
- ☒ Visitor's Zone
- ☒ Restroom

ASPIRZ FEATURES :

- ☒ Boardroom
- ☒ Restroom
- ☒ Reception
- ☒ 15+ Premium Amenities
- ☒ Valet Services
- ☒ Shuttle to Metro

FLOOR 2ND - 15TH



AMENITIES PLAN

HOTEL APARTMENT AMENITIES

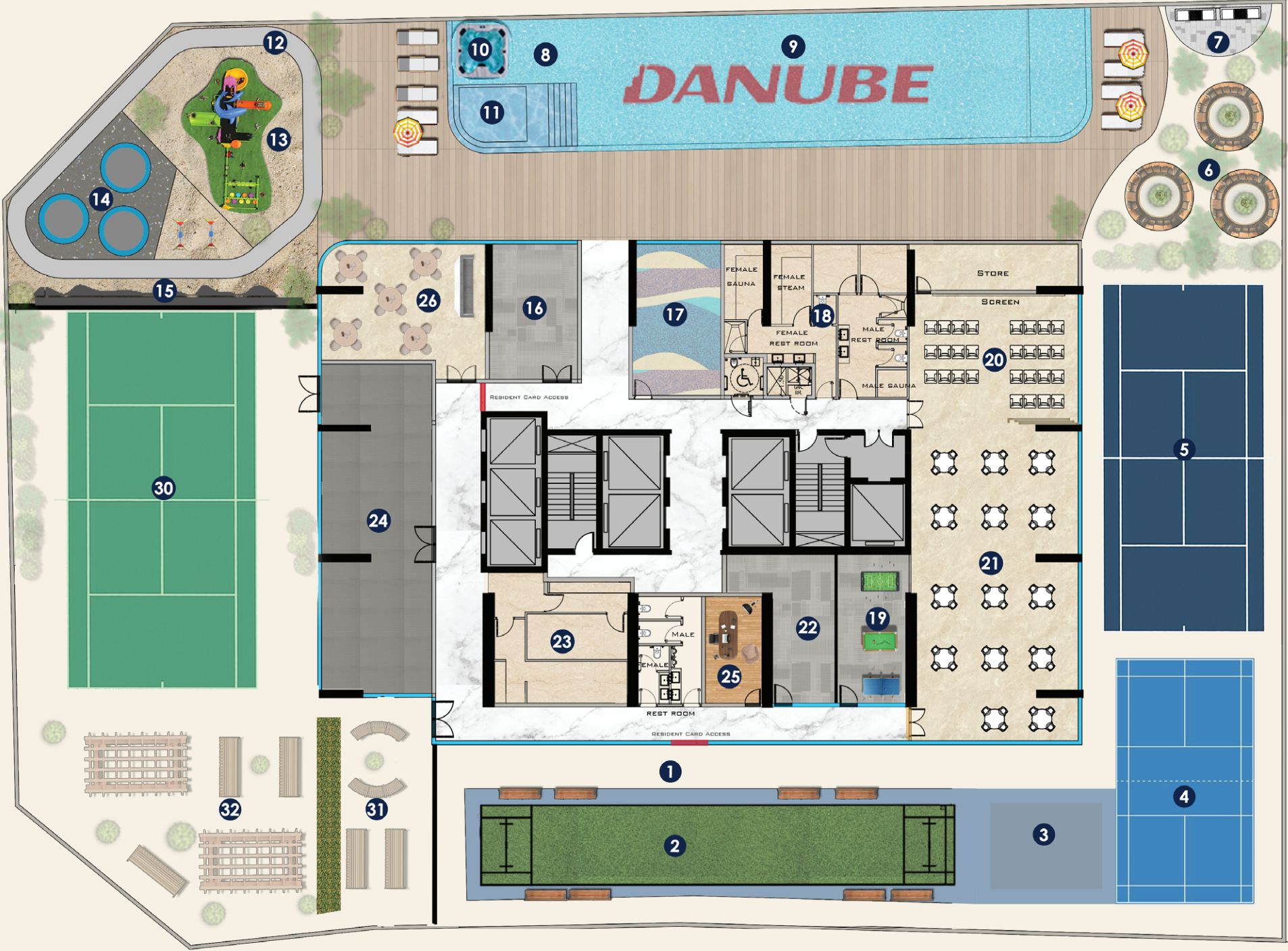
1. Jogging Track
2. Cricket Court
3. Multi-Purpose Training Space
4. Badminton Court
5. Padel Court
6. Family Seating/Cabana
7. BBQ Deck
8. Aquatic Gym
9. Swimming Pool
10. Jacuzzi
11. Kid's Pool
12. Kid's Cycling Track
13. Kid's Play area
14. Trampoline
15. Kid's Wall Climbing
16. Zumba Studio cum Yoga
17. Kid's Nursery
18. Steam and Sauna

OFFICE AND HOTEL APARTMENT AMENITIES

19. Indoor Games (Air Hockey/ Foosball/ Snooker/ Tabletennis)
20. Hitec Meeting Theatre/ Cinema
21. Party Hall cum Conference Hall
22. Business Center
23. Prayer Hall
24. Gym-Male & Female
25. Pod Cast
26. Cafe
27. Drone Delivery Zone - GF
28. Electric Vehicle - GF
29. E-Scooter/ Bicycle Parking - GF

OFFICE AMENITIES

30. Multipurpose Court
31. Cigar Zone (garden)
32. Open Garden





1. All information, materials, plans and amenities are approximate and provided for illustrative purposes only. The Developer reserves the right to make revisions to the floor plans and any features, materials, dimensions, drawings, and amenities of the project without notice.
2. Units areas, actual dimensions, layout, location, specifications of balcony, door, wardrobe or other fixtures may vary floor to floor and between units and are subject to revision by the Developer.
3. Furniture and electric devices will not be provided by the Developer, unless specified otherwise in the Unit Sale Purchase Agreement.
4. The circulation area dimensions may be added to the nearby rooms & or the spaces dimensions for illustration purpose.

DANUBE PROPERTIES

 **+971 800 57 57**

 **danubeproperties.com**

 **info@danubeproperties.ae**

Dubai | Abu Dhabi | Muscat | Riyadh | Bahrain | London | China | Mumbai | New Delhi | Gurugram | Kochi | Hyderabad

