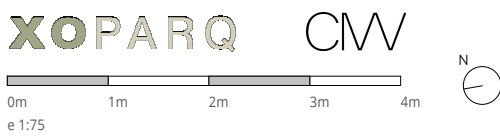


V.3P APARTMENT	
INDOOR USABLE FLOOR AREA	158.02
INDOOR GROSS FLOOR AREA	207.71
TERRACE 01	13.43
TERRACE 02	74.77
GROSS FLOOR AREA	295.91
GFA + COMMON AREAS	356.74

V.3P- USABLE FLOOR AREA	
ROOM	SURFACE
03 P03	
DINING-KITCHEN	41.76
BEDROOM 2	11.98
BEDROOM 3	12.46
BATHROOM 2	5.08
TOILET	4.32
HALLWAY	13.63
LIVING	17.96
04 P04	
BEDROOM 1	19.83
WALKIN CLOSET	4.28
BATHROOM 1	7.33
STUDIO	6.96
HALLWAY II	12.42
TOTAL USABLE FLOOR AREA	158.02

- KITCHEN
- WARDROBES
- SMART CONTROL
- PANORAMA WINDOWS
- SOLAR CONTROL GLASS
- COMMUNITY POOL
- COMMUNITY GYM
- SECURITY SYSTEM
- ART WALL
- BLINDS
- AC/HEATING
- (M) MOTORIZED WINDOW

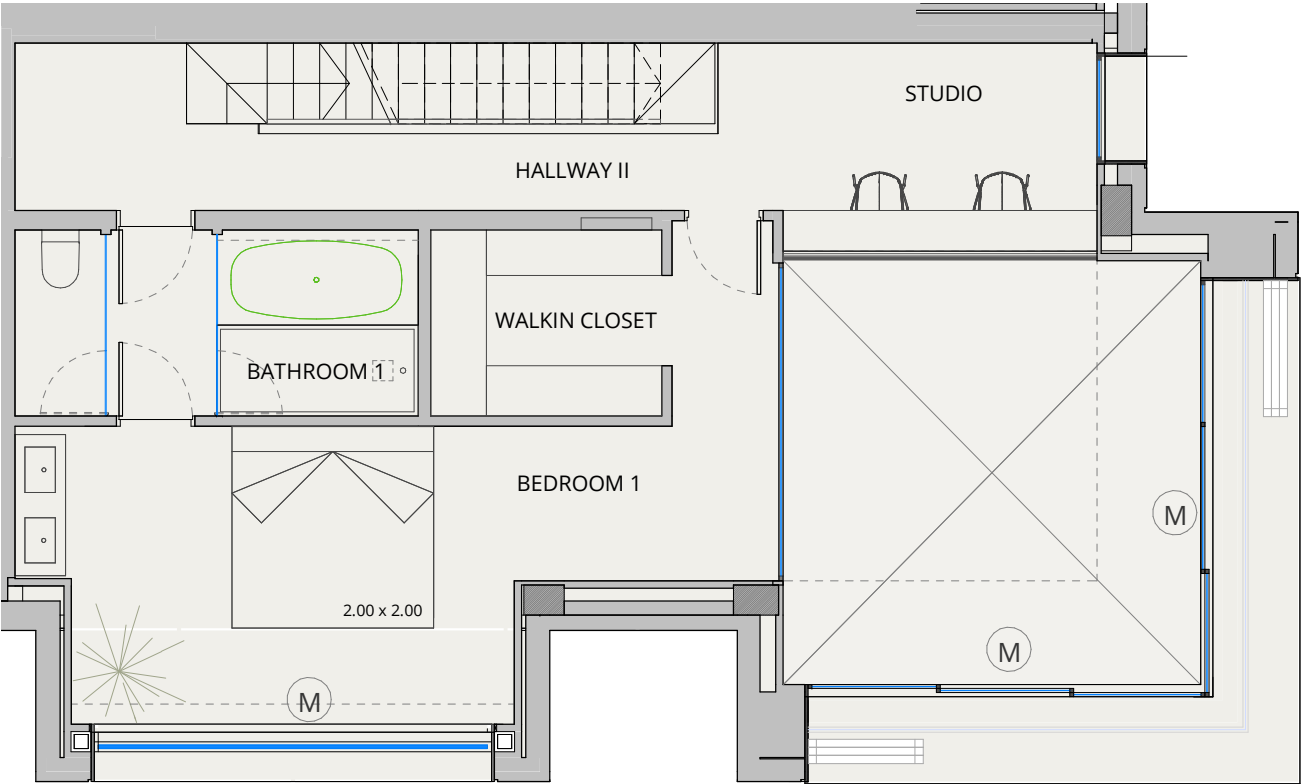


DATE: 25/04/2025

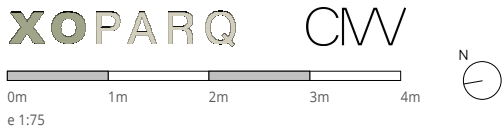
\*This document is informative, it has not contractual value until the structure and installations are completely defined

**\*\*MEASUREMENTS MAY CHANGE IN THE FURTHER PLANNING PHASE**

**\*\*\*THIS DOCUMENT, INCLUDING USABLE AREAS AND GROSS FLOOR AREAS, IS ONLY TEMPORARY AND NOT FINAL DUE TO MUNICIPAL CHANGES AND CONSTRUCTION DESIGN. IN CASE OF DISCREPANCY THE FLOOR PLAN WILL PREVAIL.**



- KITCHEN
- WARDROBES
- SMART CONTROL
- PANORAMA WINDOWS
- SOLAR CONTROL GLASS
- COMMUNITY POOL
- COMMUNITY GYM
- SECURITY SYSTEM
- ART WALL
- BLINDS
- AC/HEATING
- (M) MOTORIZED WINDOW

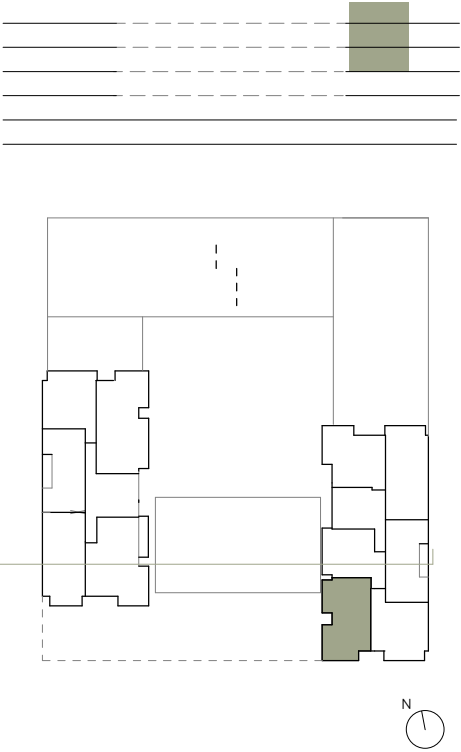


DATE: 25/04/2025

\*This document is informative, it has not contractual value until the structure and installations are completely defined

**\*\*MEASUREMENTS MAY CHANGE IN THE FURTHER PLANNING PHASE**

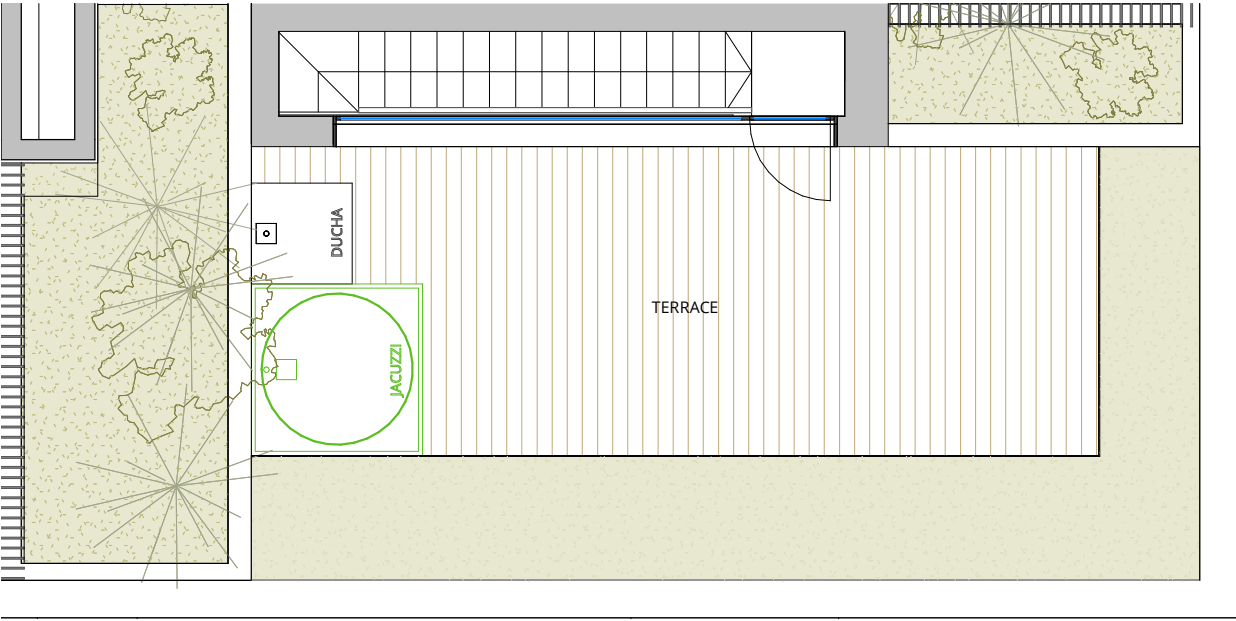
**\*\*\*THIS DOCUMENT, INCLUDING USABLE AREAS AND GROSS FLOOR AREAS, IS ONLY TEMPORARY AND NOT FINAL DUE TO MUNICIPAL CHANGES AND CONSTRUCTION DESIGN. IN CASE OF DISCREPANCY THE FLOOR PLAN WILL PREVAIL.**



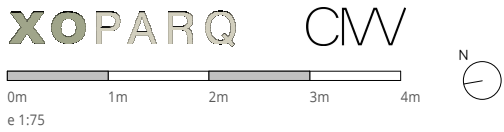
V.3P APARTMENT	
INDOOR USABLE FLOOR AREA	158.02
INDOOR GROSS FLOOR AREA	207.71
TERRACE 01	13.43
TERRACE 02	74.77
GROSS FLOOR AREA	295.91
GFA + COMMON AREAS	356.74

V.3P- USABLE FLOOR AREA	
ROOM	SURFACE
03 P03	
DINING-KITCHEN	41.76
BEDROOM 2	11.98
BEDROOM 3	12.46
BATHROOM 2	5.08
TOILET	4.32
HALLWAY	13.63
LIVING	17.96
04 P04	
BEDROOM 1	19.83
WALKIN CLOSET	4.28
BATHROOM 1	7.33
STUDIO	6.96
HALLWAY II	12.42
TOTAL USABLE FLOOR AREA	158.02

XOJAY



- KITCHEN
- WARDROBES
- SMART CONTROL
- PANORAMA WINDOWS
- SOLAR CONTROL GLASS
- COMMUNITY POOL
- COMMUNITY GYM
- SECURITY SYSTEM
- ART WALL
- BLINDS
- AC/HEATING
- (M) MOTORIZED WINDOW



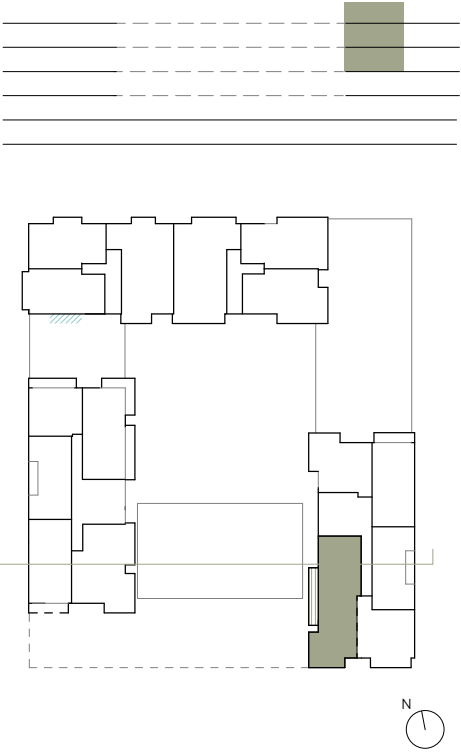
DATE: 25/04/2025

\*This document is informative, it has not contractual value until the structure and installations are completely defined

**\*\*MEASUREMENTS MAY CHANGE IN THE FURTHER PLANNING PHASE**

**\*\*\*THIS DOCUMENT, INCLUDING USABLE AREAS AND GROSS FLOOR AREAS, IS ONLY TEMPORARY AND NOT FINAL DUE TO MUNICIPAL CHANGES AND CONSTRUCTION DESIGN. IN CASE OF DISCREPANCY THE FLOOR PLAN WILL PREVAIL.**

XOPARQ  
The Palma Residences



V.3P APARTMENT	
INDOOR USABLE FLOOR AREA	158.02
INDOOR GROSS FLOOR AREA	207.71
TERRACE 01	13.43
TERRACE 02	74.77
GROSS FLOOR AREA	295.91
GFA + COMMON AREAS	356.74

V.3P- USABLE FLOOR AREA	
ROOM	SURFACE
03 P03	
DINING-KITCHEN	41.76
BEDROOM 2	11.98
BEDROOM 3	12.46
BATHROOM 2	5.08
TOILET	4.32
HALLWAY	13.63
LIVING	17.96
04 P04	
BEDROOM 1	19.83
WALKIN CLOSET	4.28
BATHROOM 1	7.33
STUDIO	6.96
HALLWAY II	12.42
TOTAL USABLE FLOOR AREA	158.02

APARTMENT

3.P III