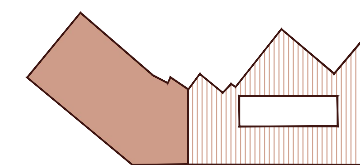
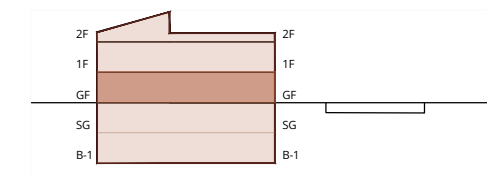
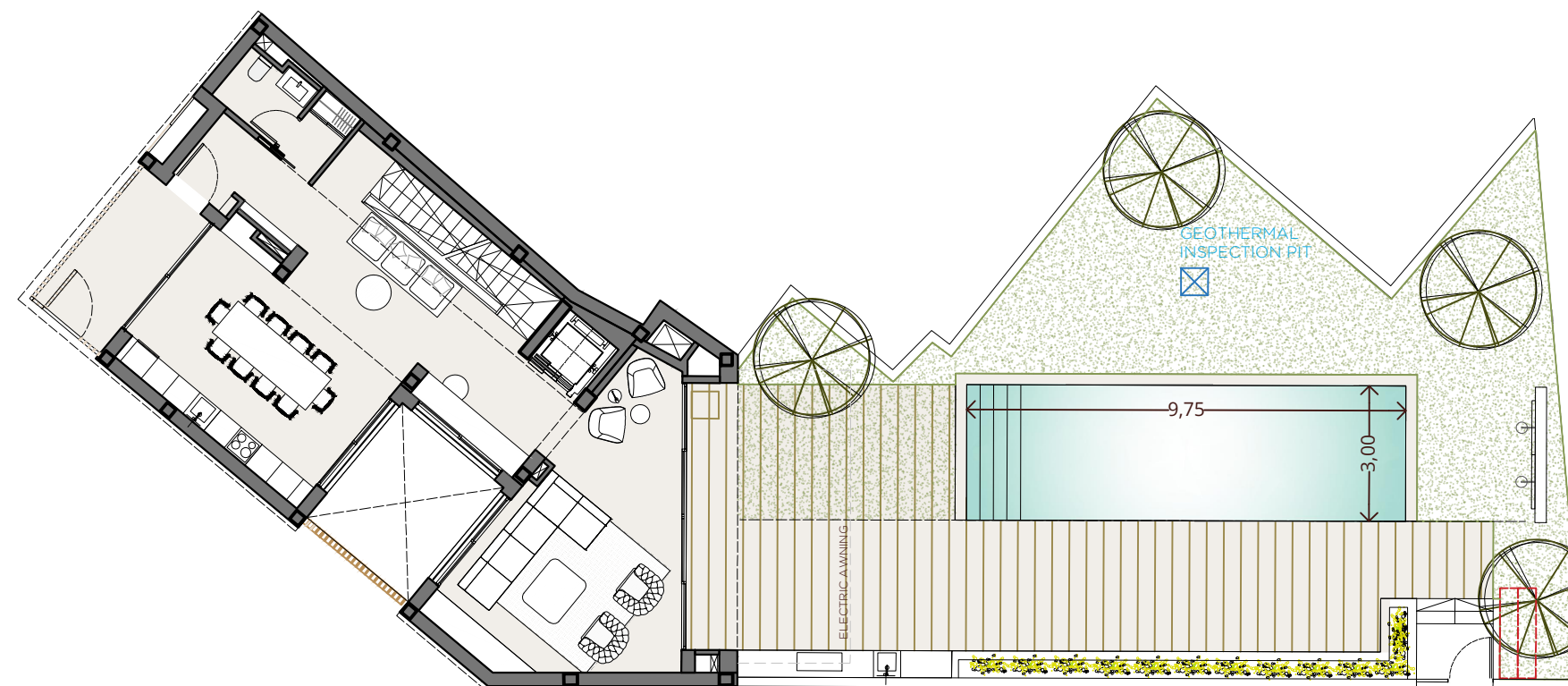


Price on request

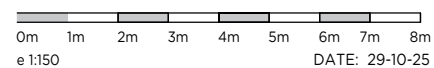


**-VILLA XO-**

INDOOR USABLE FLOOR AREA	416,17
INDOOR GROSS FLOOR AREA	565,87
OUTDOOR GROSS FLOOR AREA	276,18
TOTAL GROSS FLOOR AREA	842,05
GFA + COMMON AREAS	1045,49
POOL SURFACE	29,26
COURTYARD	146,37

- KITCHEN
- WARDROBES
- SMART CONTROL
- SOLAR CONTROL GLASS
- EXTERIOR SHUTTERS
- PRIVATE FACILITIES
- AC/HEATING

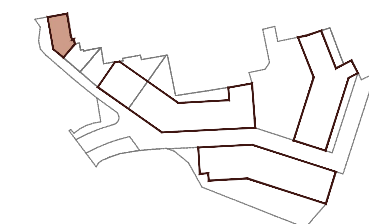
**XOJ**



DATE: 29-10-25  
e 1:150

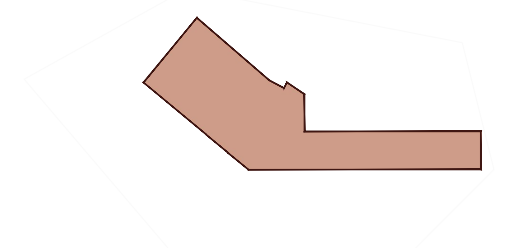
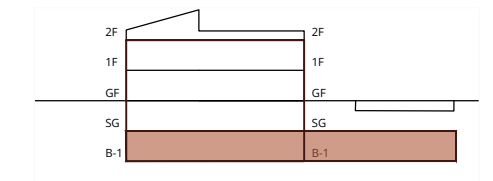
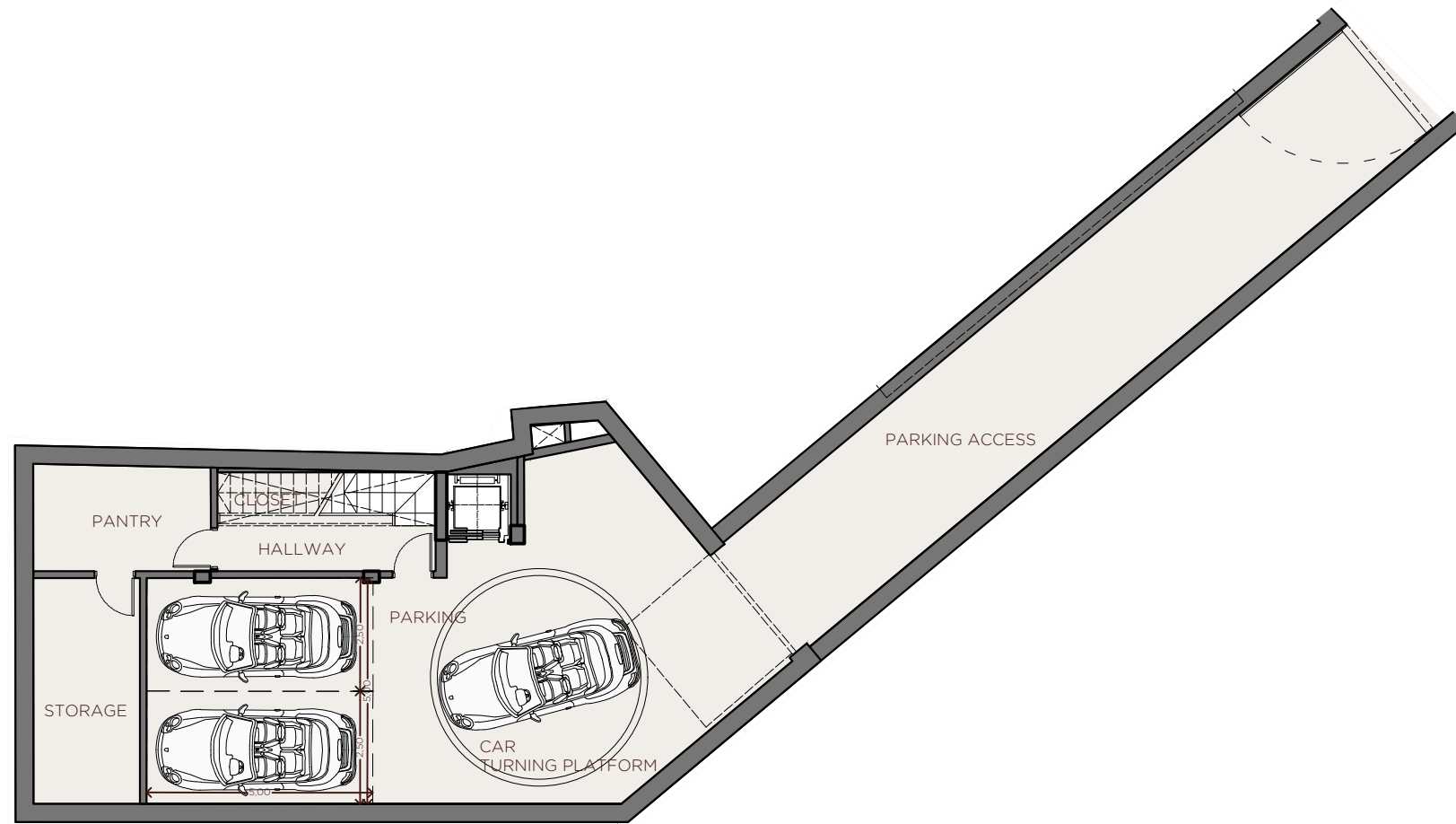
\*This document is informative, it has not contractual value until the structure and installations are completely defined  
\*\*THIS DOCUMENT INCLUDING USABLE AREAS AND GROSS FLOOR AREAS IS ONLY TEMPORARY AND NOT FINAL DUE TO MUNICIPAL CHANGES AND CONSTRUCTION DESIGN

**XOJONQUET**  
THE PARK RESIDENCES



**VILLA XO**

# XOJAY



### -VILLA XO-

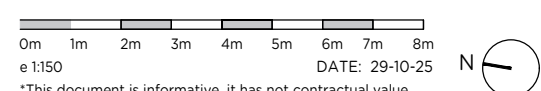
INDOOR USABLE FLOOR AREA	416,17
INDOOR GROSS FLOOR AREA	565,87
OUTDOOR GROSS FLOOR AREA	276,18
TOTAL GROSS FLOOR AREA	842,05
GFA + COMMON AREAS	1045,49

### VILLA XO -USABLE FLOOR AREA-

ROOM	SURFACE
<b>BASEMENT FLOOR -1</b>	
HALLWAY	5.74
CLOSET	1.98
PANTRY	9.14
STORAGE ROOM	11.74
PARKING	75.04
PARKING ACCESS	53.18

- KITCHEN
- WARDROBES
- SMART CONTROL
- SOLAR CONTROL GLASS
- EXTERIOR SHUTTERS
- PRIVATE FACILITIES
- AC/HEATING

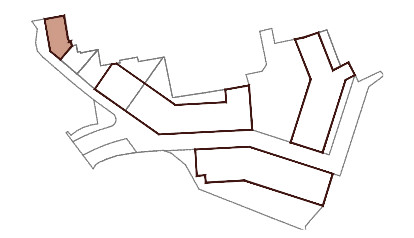
# XOJ



DATE: 29-10-25  
 \*This document is informative, it has not contractual value until the structure and installations are completely defined  
 \*\*THIS DOCUMENT INCLUDING USABLE AREAS AND GROSS FLOOR AREAS IS ONLY TEMPORARY AND NOT FINAL DUE TO MUNICIPALY CHANGES AND CONSTRUCTION DESIGN

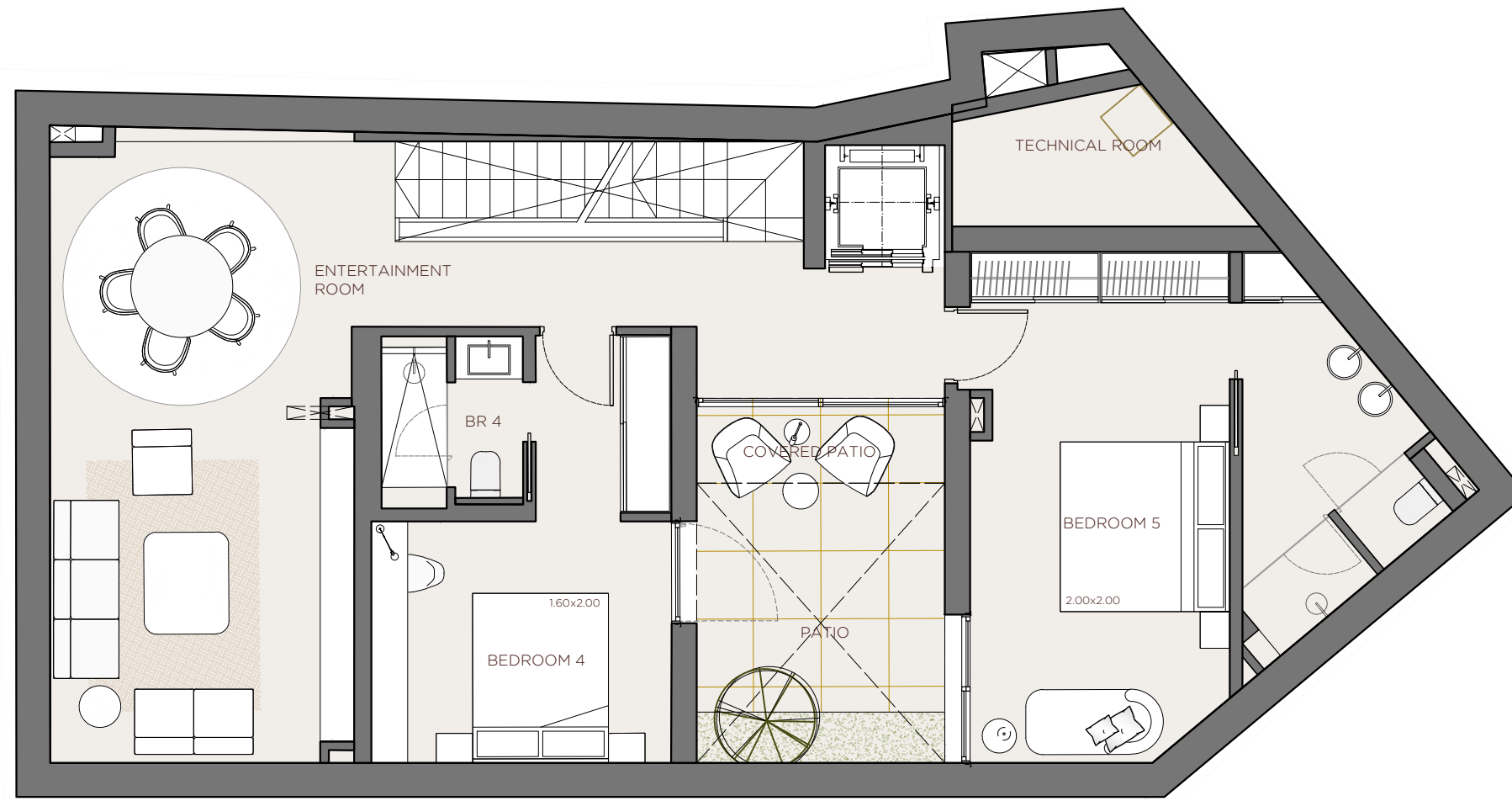
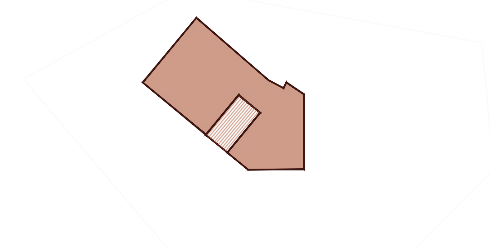
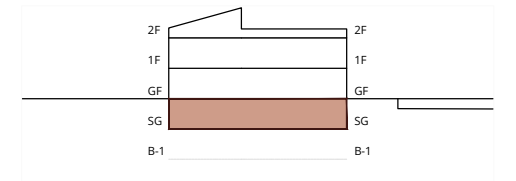
# XOJONQUET

THE PARK RESIDENCES



# VILLA XO

# XOJAY



**-VILLA XO-**

INDOOR USABLE FLOOR AREA	416,17
INDOOR GROSS FLOOR AREA	565,87
OUTDOOR GROSS FLOOR AREA	276,18
TOTAL GROSS FLOOR AREA	842,05
GFA + COMMON AREAS	1045,49

**VILLA XO -USABLE FLOOR AREA-**

ROOM	SURFACE
<b>SEMI GROUND FLOOR</b>	
ENTERTAINMENT ROOM	36,10
BEDROOM 4	13,52
BATHROOM 4	3,22
BEDROOM & BATHROOM 5	25,40
COVERED PATIO	2,63
TECHNICAL ROOM	4,41
SEMI GF PATIO	9,65

- KITCHEN
- WARDROBES
- SMART CONTROL
- SOLAR CONTROL GLASS
- EXTERIOR SHUTTERS
- PRIVATE FACILITIES
- AC/HEATING

# XOJ



DATE: 29-10-25

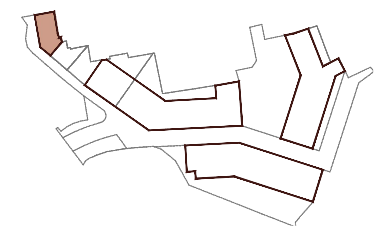


\*This document is informative, it has not contractual value until the structure and installations are completely defined

\*\*THIS DOCUMENT INCLUDING USABLE AREAS AND GROSS FLOOR AREAS IS ONLY TEMPORARY AND NOT FINAL DUE TO MUNICIPAL CHANGES AND CONSTRUCTION DESIGN

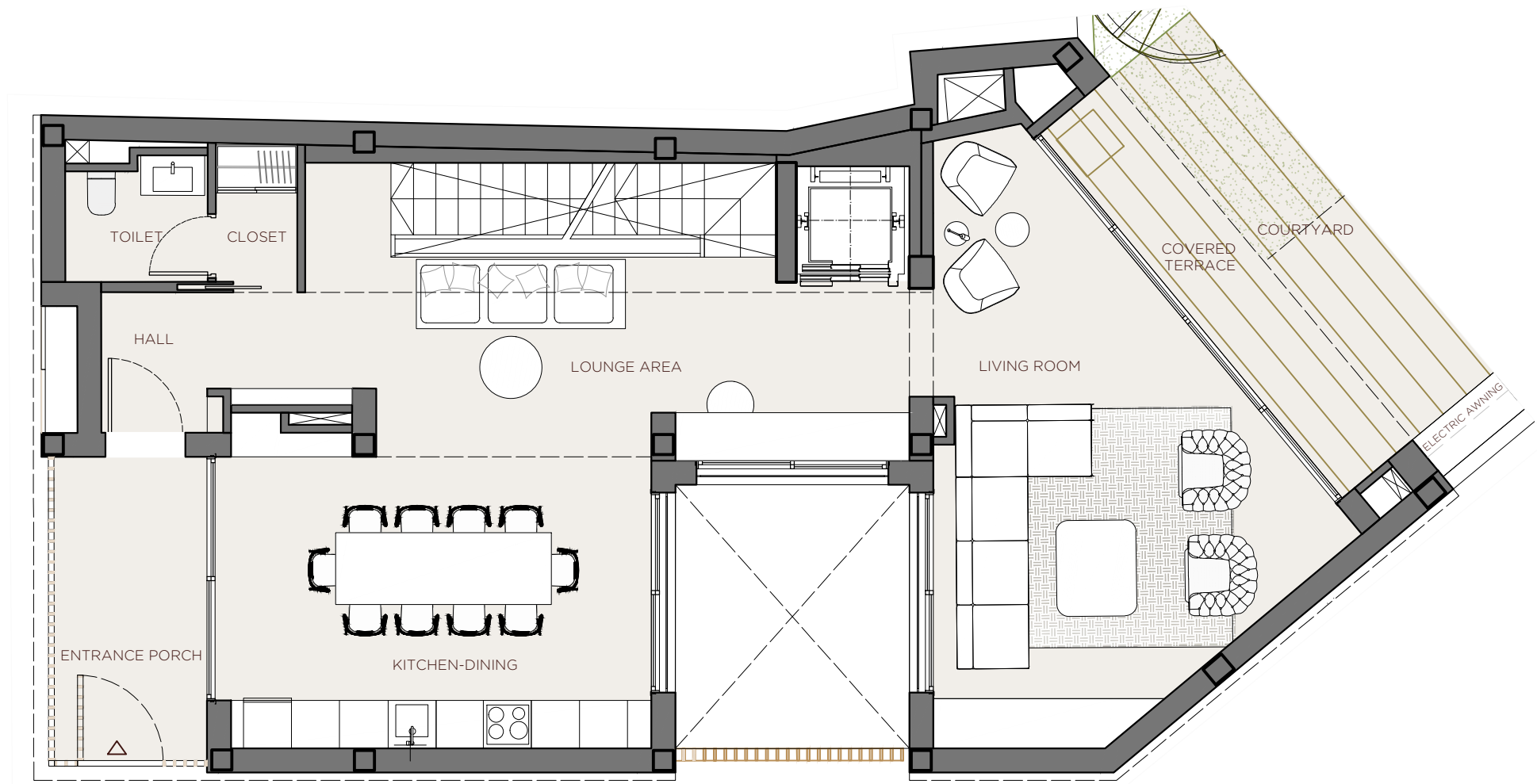
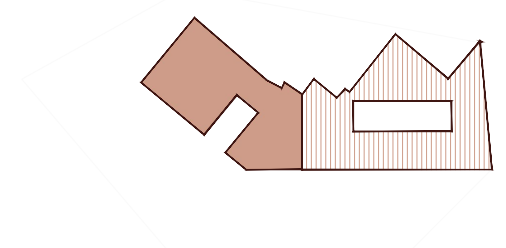
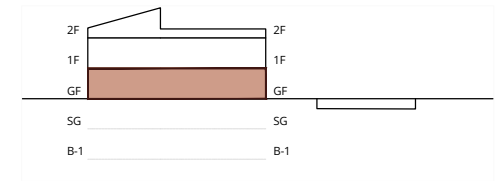
# XOJONQUET

THE PARK RESIDENCES



# VILLA XO

# XOJAY



## -VILLA XO-

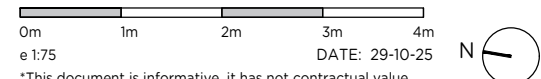
INDOOR USABLE FLOOR AREA	416,17
INDOOR GROSS FLOOR AREA	565,87
OUTDOOR GROSS FLOOR AREA	276,18
TOTAL GROSS FLOOR AREA	842,05
GFA + COMMON AREAS	1045,49

## VILLA XO -USABLE FLOOR AREA-

ROOM	SURFACE
<b>GROUND FLOOR</b>	
ENTRANCE PORCH	7.27
HALL	2.64
LOUNGE AREA	20.53
KITCHEN-DINING	20.41
LIVING ROOM	26.36
CLOSET	1.76
TOILET	2.64
COVERED TERRACE	6.74
COURTYARD	146.37

- KITCHEN
- WARDROBES
- SMART CONTROL
- SOLAR CONTROL GLASS
- EXTERIOR SHUTTERS
- PRIVATE FACILITIES
- AC/HEATING

# XOJ



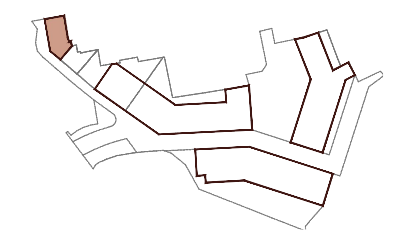
DATE: 29-10-25

\*This document is informative, it has not contractual value until the structure and installations are completely defined

\*\*THIS DOCUMENT INCLUDING USABLE AREAS AND GROSS FLOOR AREAS IS ONLY TEMPORARY AND NOT FINAL DUE TO MUNICIPAL CHANGES AND CONSTRUCTION DESIGN

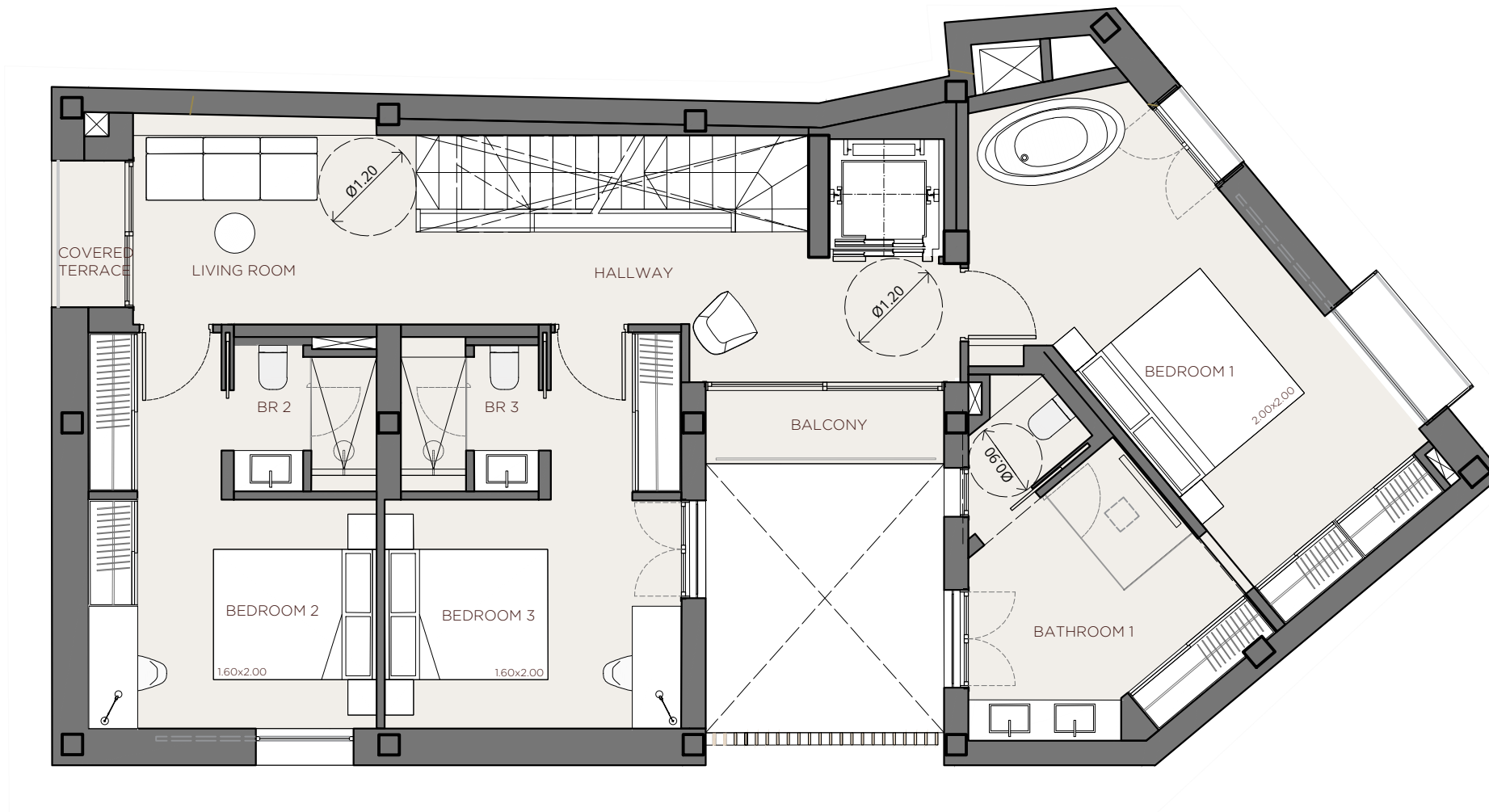
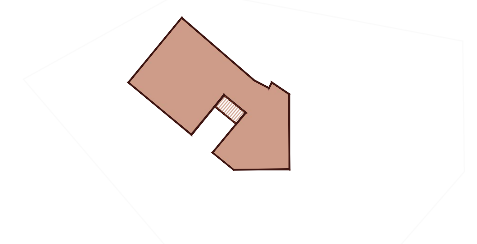
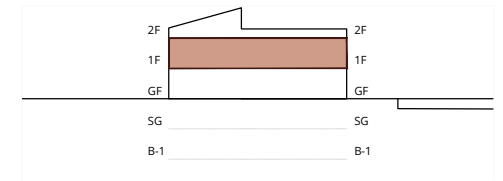
# XOJONQUET

THE PARK RESIDENCES



# VILLA XO

# XOJAY



-VILLA XO-	
INDOOR USABLE FLOOR AREA	416,17
INDOOR GROSS FLOOR AREA	565,87
OUTDOOR GROSS FLOOR AREA	276,18
TOTAL GROSS FLOOR AREA	842,05
GFA + COMMON AREAS	1045,49

VILLA XO -USABLE FLOOR AREA-	
ROOM	SURFACE
<b>FIRST FLOOR</b>	
LIVING ROOM	9.03
BEDROOM 1	19.64
BATHROOM 1	11.02
BEDROOM 2	13.20
BATHROOM 2	2.97
BEDROOM 3	13.46
BATHROOM 3	3.06
HALLWAY	9.25
BALCONY 1	2.63
COVERED TERRACE	1.46

- KITCHEN
- WARDROBES
- SMART CONTROL
- SOLAR CONTROL GLASS
- EXTERIOR SHUTTERS
- PRIVATE FACILITIES
- AC/HEATING

# XOJ



DATE: 29-10-25

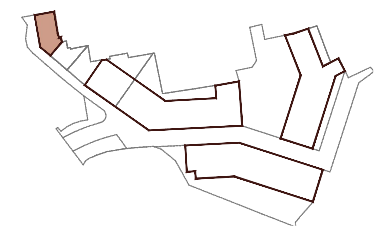


\*This document is informative, it has not contractual value until the structure and installations are completely defined

\*\*THIS DOCUMENT INCLUDING USABLE AREAS AND GROSS FLOOR AREAS IS ONLY TEMPORARY AND NOT FINAL DUE TO MUNICIPAL CHANGES AND CONSTRUCTION DESIGN

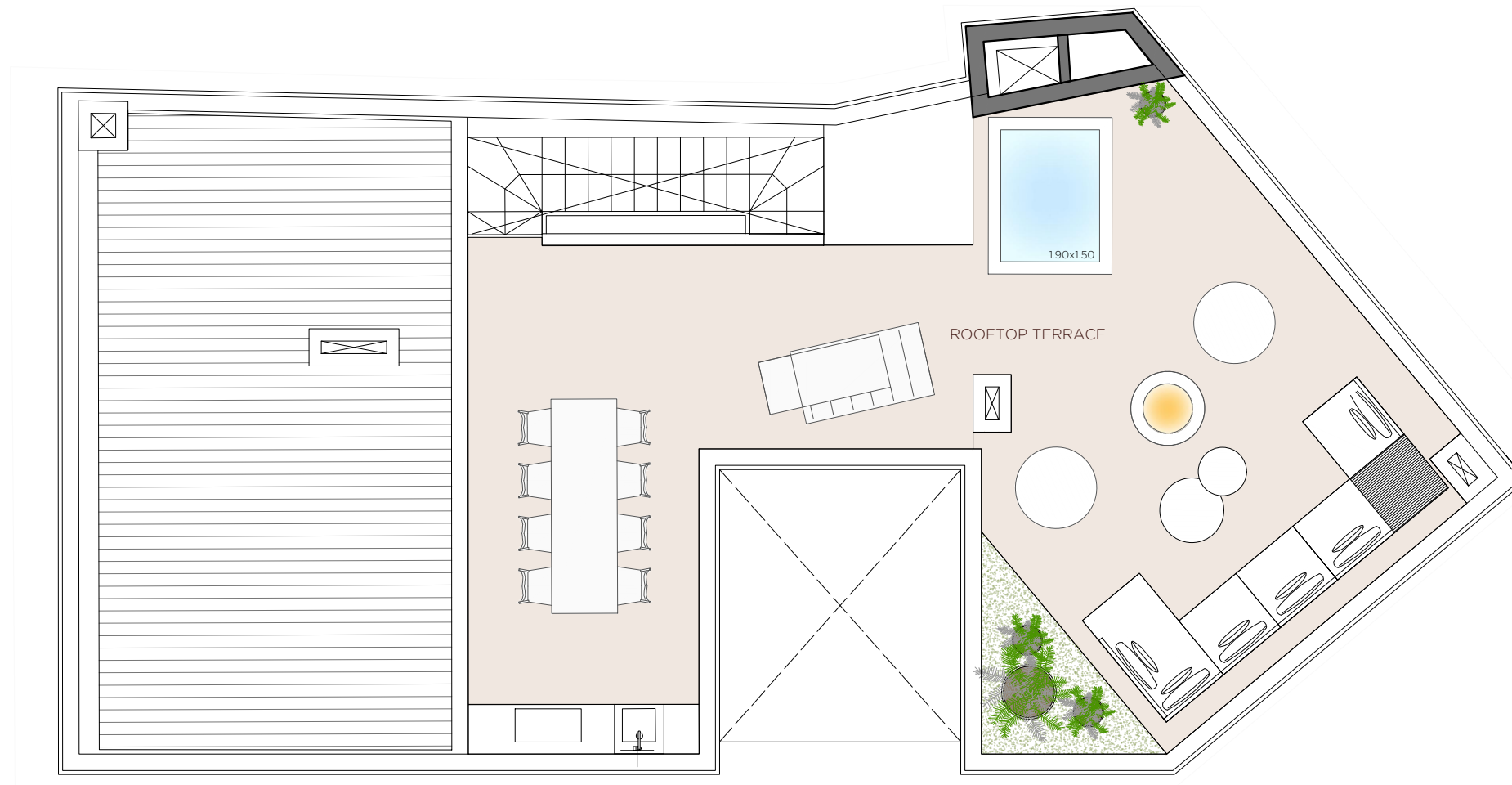
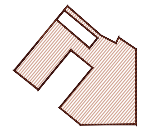
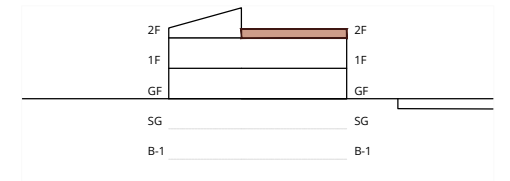
# XOJONQUET

THE PARK RESIDENCES



# VILLA XO

# XOJAY



-VILLA XO-	
INDOOR USABLE FLOOR AREA	416,17
INDOOR GROSS FLOOR AREA	565,87
OUTDOOR GROSS FLOOR AREA	276,18
TOTAL GROSS FLOOR AREA	842,05
GFA + COMMON AREAS	1045,49

VILLA XO -USABLE FLOOR AREA-	
ROOM	SURFACE
ROOFTOP TERRACE	59,42

- KITCHEN
- WARDROBES
- SMART CONTROL
- SOLAR CONTROL GLASS
- EXTERIOR SHUTTERS
- PRIVATE FACILITIES
- AC/HEATING

## XOJ

0m 1m 2m 3m 4m

e 1:75 DATE: 29-10-25

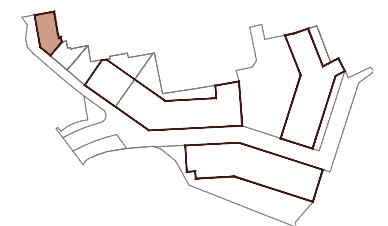


\*This document is informative, it has not contractual value until the structure and installations are completely defined

\*\*THIS DOCUMENT INCLUDING USABLE AREAS AND GROSS FLOOR AREAS IS ONLY TEMPORARY AND NOT FINAL DUE TO MUNICIPAL CHANGES AND CONSTRUCTION DESIGN

# XOJONQUET

THE PARK RESIDENCES



## VILLA XO