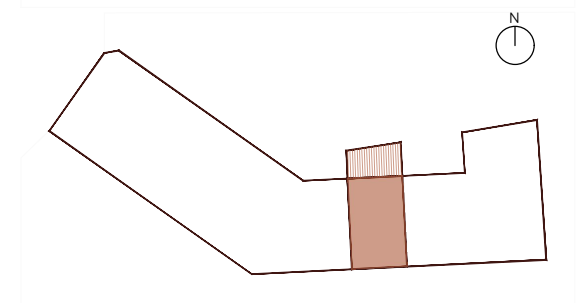
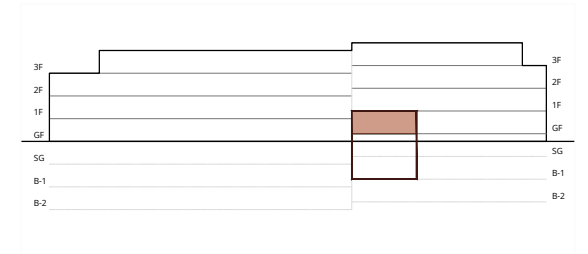
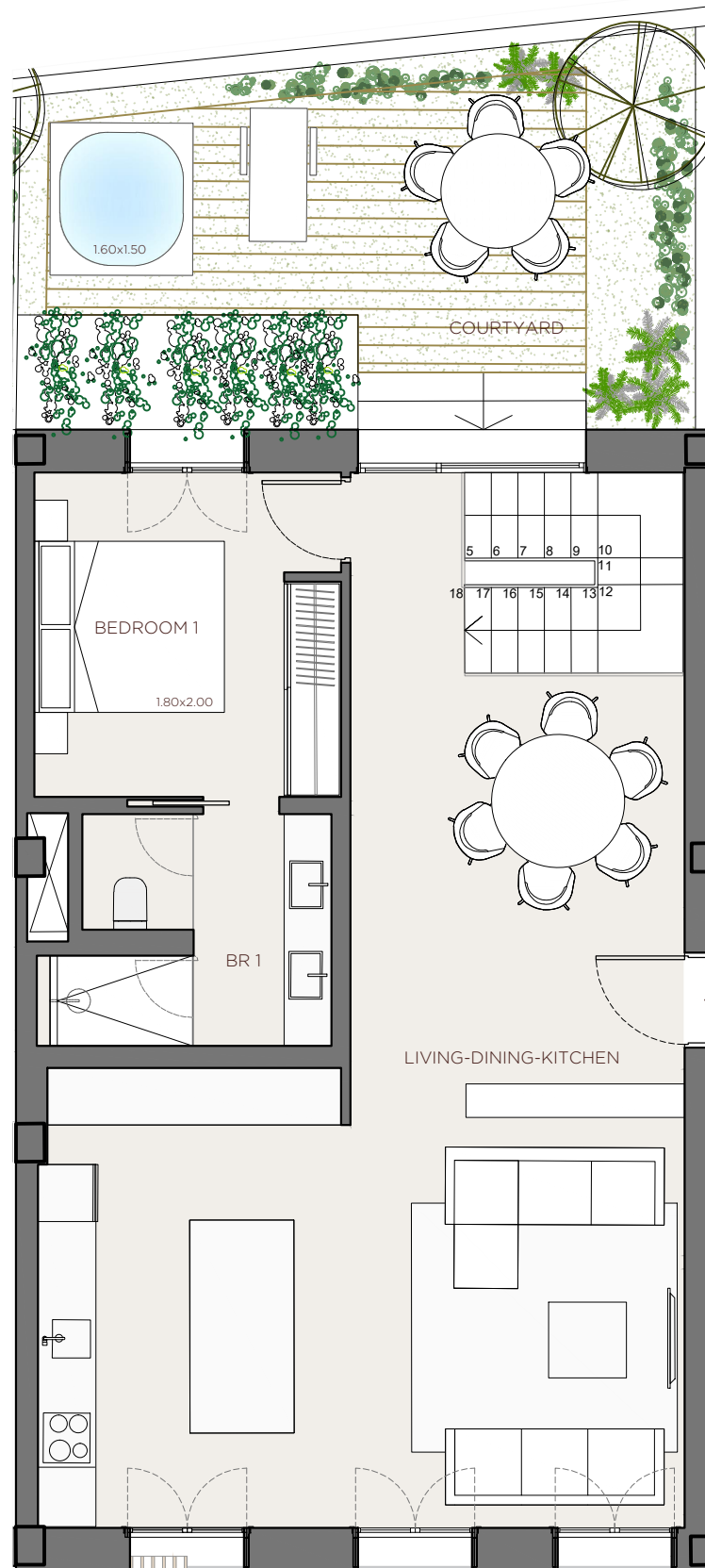




€ 2'310'000.00

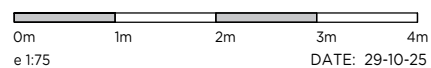


1 F - APARTMENT -	
INDOOR USABLE FLOOR AREA	207,70
INDOOR GROSS FLOOR AREA	261,16
OUTDOOR GROSS FLOOR AREA	29,51
TOTAL GROSS FLOOR AREA	290,67
GFA + COMMON AREAS	360,90

1 F - USABLE FLOOR AREA -	
ROOM	SURFACE
GROUND FLOOR	
LIVING-DINING-KITCHEN	49,88
BEDROOM 1	10,96
BATHROOM 1	6,53
COURTYARD	26,10

- KITCHEN
- WARDROBES
- SMART CONTROL
- SOLAR CONTROL GLASS
- EXTERIOR SHUTTERS
- COMMUNITY POOL
- COMMUNITY SPA
- COMMUNITY GYM
- AC/HEATING

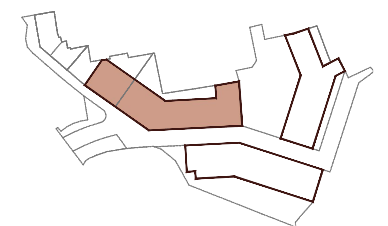
XOJ



DATE: 29-10-25
e 1:75

*This document is informative, it has not contractual value until the structure and installations are completely defined
**THIS DOCUMENT INCLUDING USABLE AREAS AND GROSS FLOOR AREAS IS ONLY TEMPORARY AND NOT FINAL DUE TO MUNICIPALY CHANGES AND CONSTRUCTION DESIGN

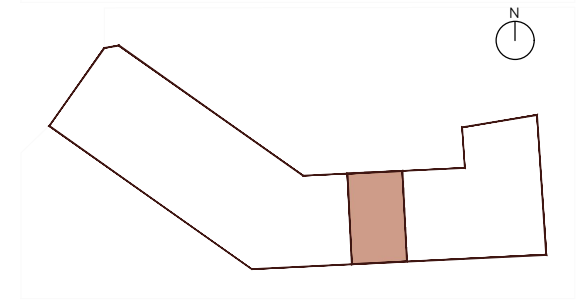
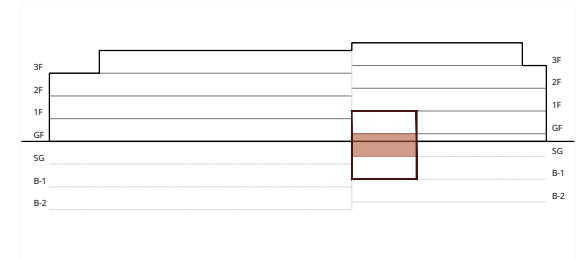
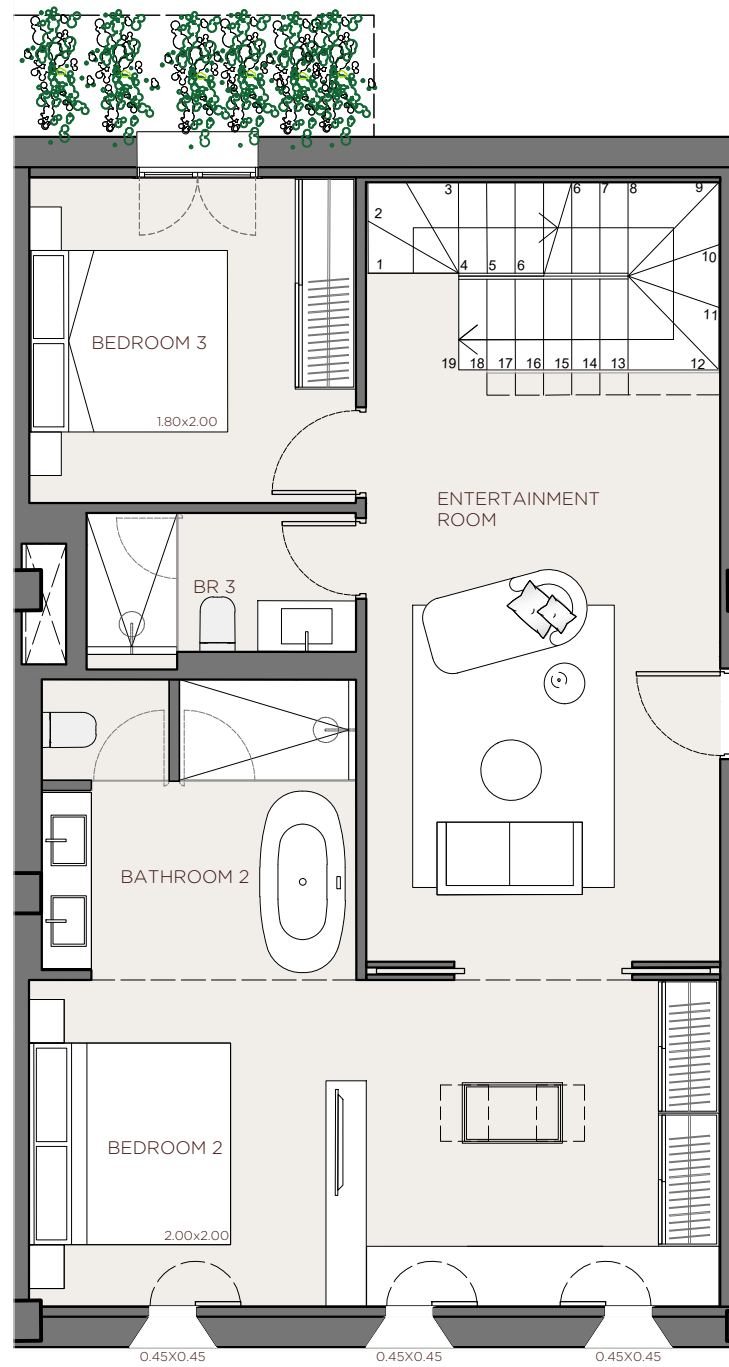
XOJONQUET
THE PARK RESIDENCES



APARTMENT

1 F

XOJAY



1 F -APARTMENT-

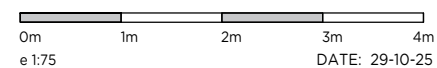
INDOOR USABLE FLOOR AREA	207,70
INDOOR GROSS FLOOR AREA	261,16
OUTDOOR GROSS FLOOR AREA	29,51
TOTAL GROSS FLOOR AREA	290,67
GFA + COMMON AREAS	360,90

1 F -USABLE FLOOR AREA-

ROOM	SURFACE
SEMI GROUND FLOOR	
ENTERTAINMENT ROOM	21,82
BEDROOM 3	10,57
BATHROOM 3	3,88
BEDROOM 2	22,16
BATHROOM 2	9,09

- KITCHEN
- WARDROBES
- SMART CONTROL
- SOLAR CONTROL GLASS
- EXTERIOR SHUTTERS
- COMMUNITY POOL
- COMMUNITY SPA
- COMMUNITY GYM
- AC/HEATING

XOJ

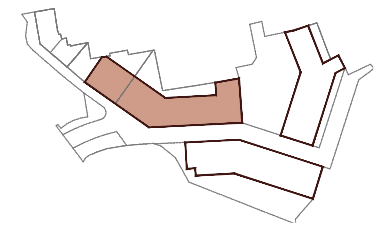


*This document is informative, it has not contractual value until the structure and installations are completely defined

**THIS DOCUMENT INCLUDING USABLE AREAS AND GROSS FLOOR AREAS IS ONLY TEMPORARY AND NOT FINAL DUE TO MUNICIPALY CHANGES AND CONSTRUCTION DESIGN

XOJONQUET

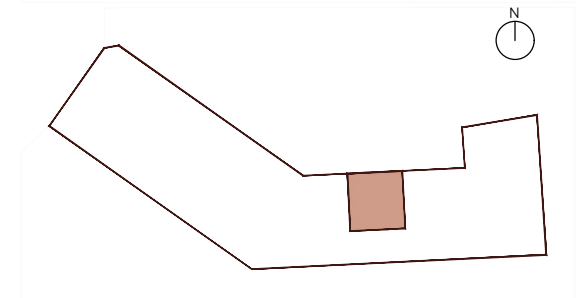
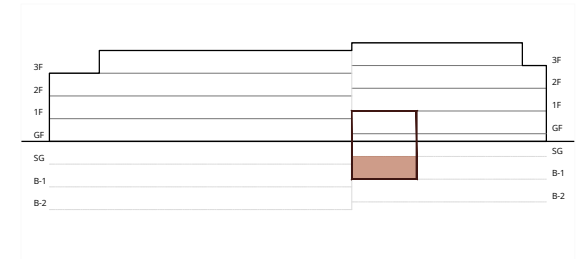
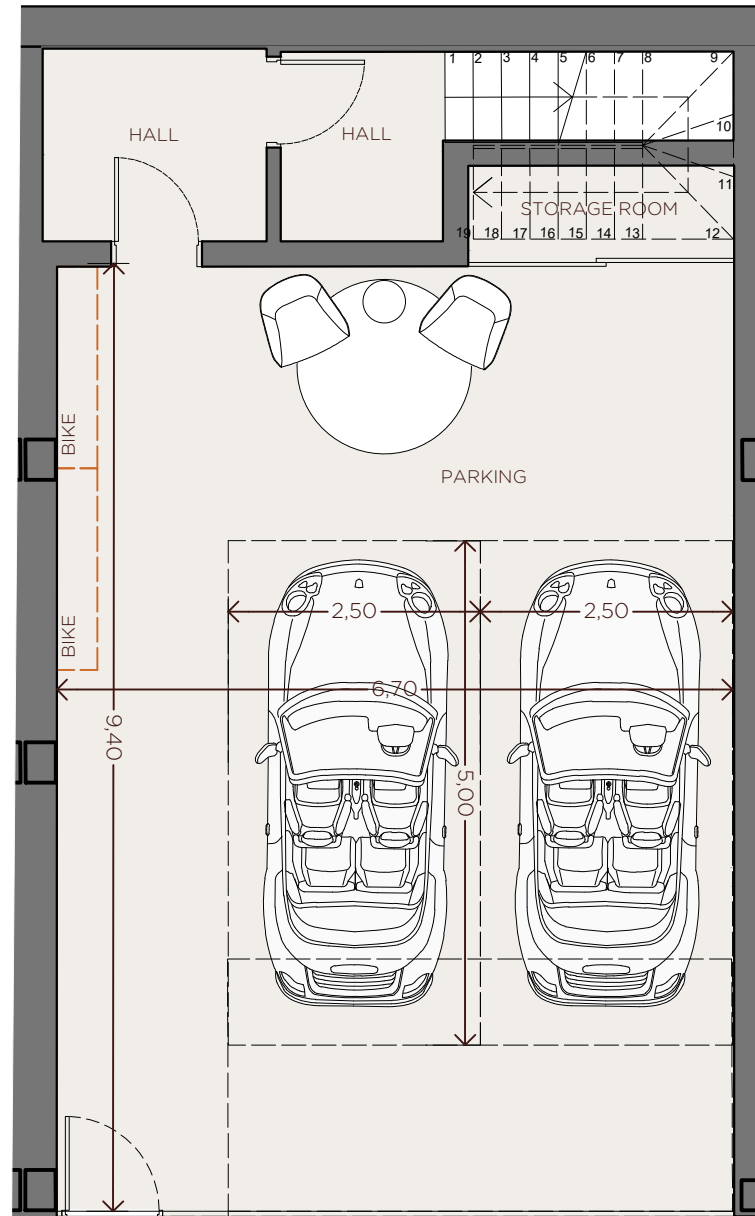
THE PARK RESIDENCES



APARTMENT

1 F

XOJAY

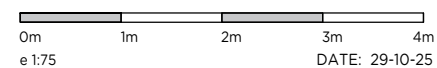


1 F -APARTMENT-	
INDOOR USABLE FLOOR AREA	207,70
INDOOR GROSS FLOOR AREA	261,16
OUTDOOR GROSS FLOOR AREA	29,51
TOTAL GROSS FLOOR AREA	290,67
GFA + COMMON AREAS	360,90

1 F -USABLE FLOOR AREA-	
ROOM	SURFACE
BASEMENT FLOOR -1	
HALL	3,03
HALL	4,24
PARKING	62,91
STORAGE ROOM	2,64

- KITCHEN
- WARDROBES
- SMART CONTROL
- SOLAR CONTROL GLASS
- EXTERIOR SHUTTERS
- COMMUNITY POOL
- COMMUNITY SPA
- COMMUNITY GYM
- AC/HEATING

XOJ

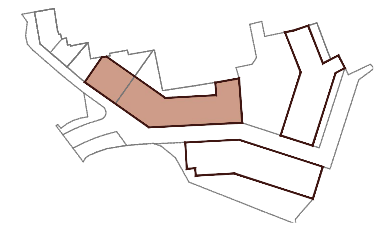


*This document is informative, it has not contractual value until the structure and installations are completely defined

**THIS DOCUMENT INCLUDING USABLE AREAS AND GROSS FLOOR AREAS IS ONLY TEMPORARY AND NOT FINAL DUE TO MUNICIPALY CHANGES AND CONSTRUCTION DESIGN

XOJONQUET

THE PARK RESIDENCES

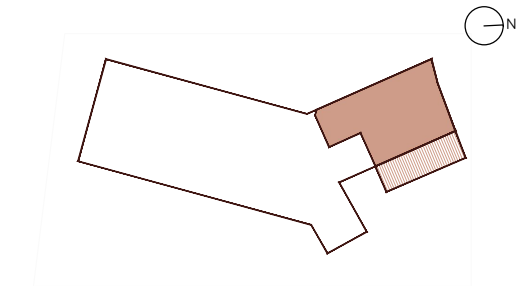
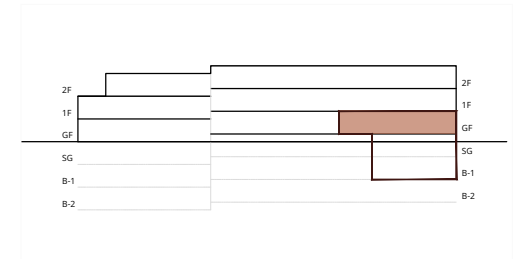
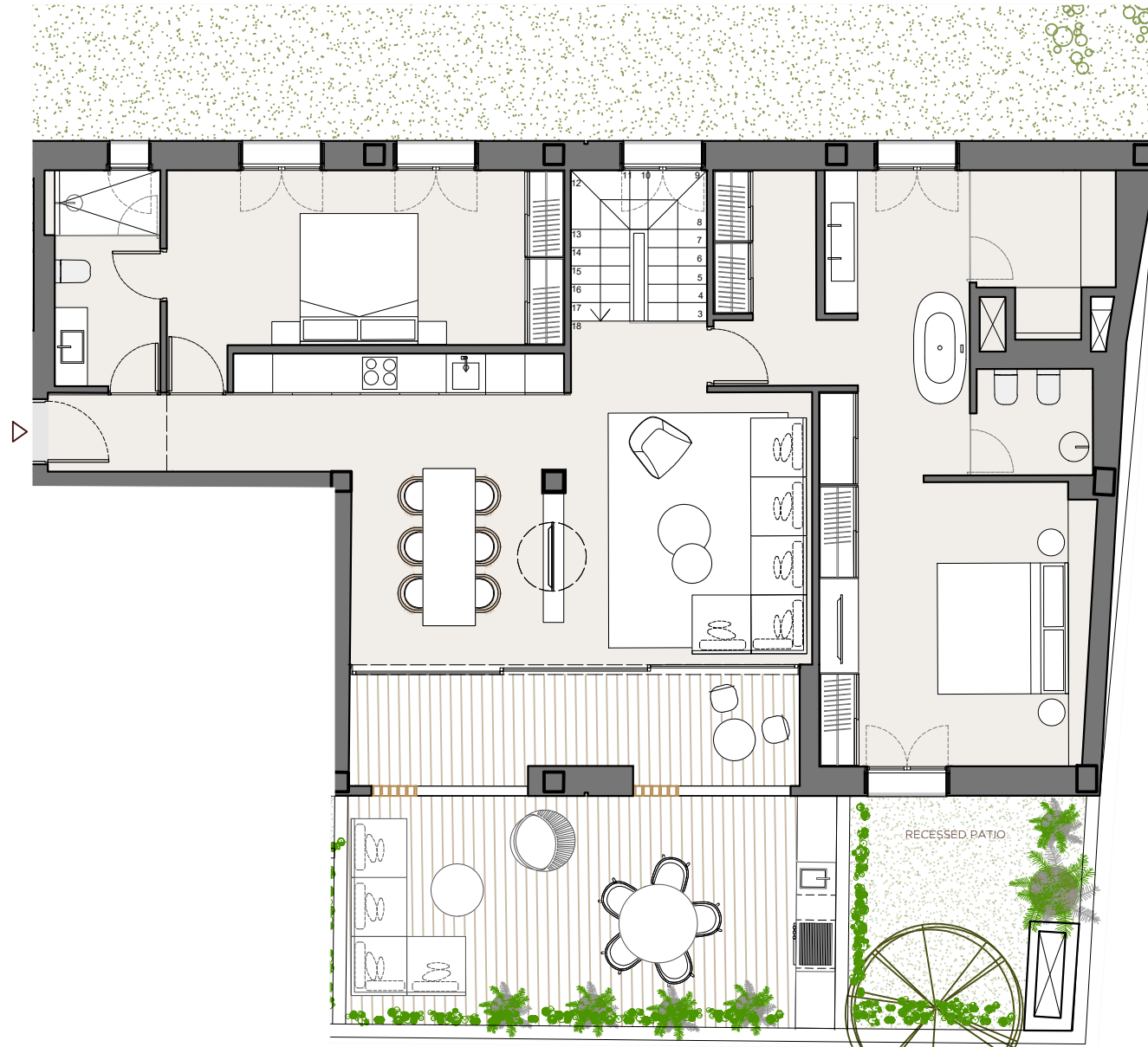


APARTMENT

1 F



€ 3'780'000.00



1 M - APARTMENT -	
INDOOR USABLE FLOOR AREA	288,95
INDOOR GROSS FLOOR AREA	361,46
OUTDOOR GROSS FLOOR AREA	42,93
TOTAL GROSS FLOOR AREA	404,39
GFA + COMMON AREAS	502,09

- KITCHEN
- WARDROBES
- SMART CONTROL
- SOLAR CONTROL GLASS
- EXTERIOR SHUTTERS
- COMMUNITY POOL
- COMMUNITY SPA
- COMMUNITY GYM
- AC/HEATING

XOJ



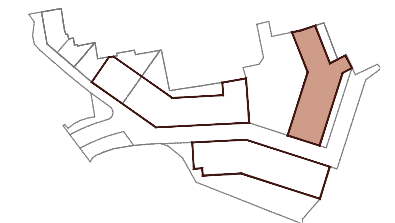
e 1:100 DATE: 29-10-25

*This document is informative, it has not contractual value until the structure and installations are completely defined

**THIS DOCUMENT INCLUDING USABLE AREAS AND GROSS FLOOR AREAS IS ONLY TEMPORARY AND NOT FINAL DUE TO MUNICIPALY CHANGES AND CONSTRUCTION DESIGN



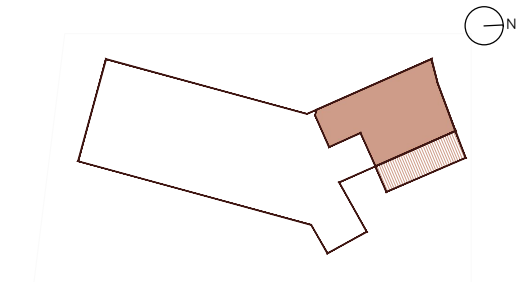
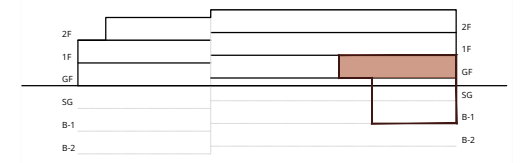
XOJONQUET
THE PARK RESIDENCES



APARTMENT

1 M

XOJAY



1 M -APARTMENT-

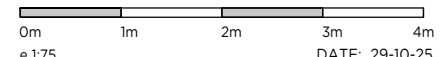
INDOOR USABLE FLOOR AREA	288,95
INDOOR GROSS FLOOR AREA	361,46
OUTDOOR GROSS FLOOR AREA	42,93
TOTAL GROSS FLOOR AREA	404,39
GFA + COMMON AREAS	502,09

1 M -USABLE FLOOR AREA-

ROOM	SURFACE
GROUND FLOOR	
HALL	2.16
LIVING-DINING-KITCHEN	37.93
BEDROOM 1	16.86
BATHROOM 1	5.54
CLOSET	3.53
MASTER SUITE BEDROOM	30.04
TOILET	2.96
STEAM BATH	4.74
COVERED TERRACE	11.21
COURTYARD	38.34

- KITCHEN
- WARDROBES
- SMART CONTROL
- SOLAR CONTROL GLASS
- EXTERIOR SHUTTERS
- COMMUNITY POOL
- COMMUNITY SPA
- COMMUNITY GYM
- AC/HEATING

XOJ

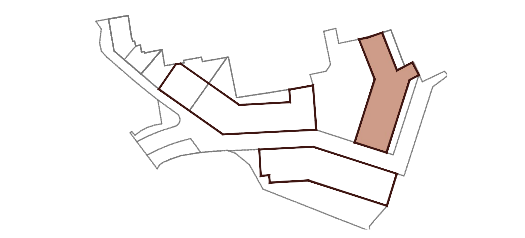


*This document is informative, it has not contractual value until the structure and installations are completely defined

**THIS DOCUMENT INCLUDING USABLE AREAS AND GROSS FLOOR AREAS IS ONLY TEMPORARY AND NOT FINAL DUE TO MUNICIPALY CHANGES AND CONSTRUCTION DESIGN

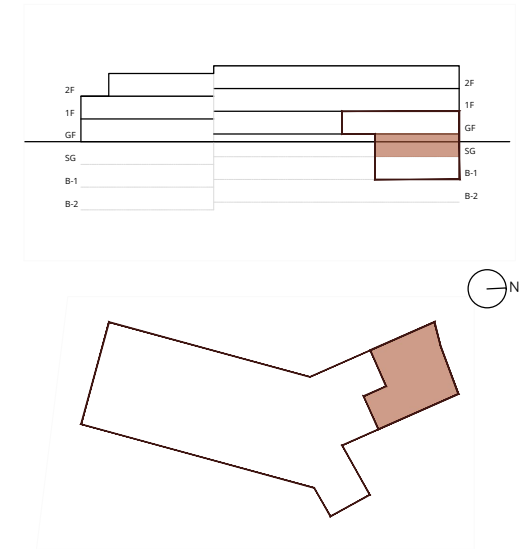
XOJONQUET

THE PARK RESIDENCES



APARTMENT **1 M**

XOJAY



1 M -APARTMENT-

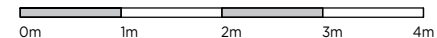
INDOOR USABLE FLOOR AREA	288,95
INDOOR GROSS FLOOR AREA	361,46
OUTDOOR GROSS FLOOR AREA	42,93
TOTAL GROSS FLOOR AREA	404,39
GFA + COMMON AREAS	502,09

1 M -USABLE FLOOR AREA-

ROOM	SURFACE
SEMI GROUND FLOOR	
ENTERTAINMENT ROOM	40,10
BEDROOM 2	14,18
BATHROOM 2	6,48
BEDROOM 3	12,17
BATHROOM 3	5,39

- KITCHEN
- WARDROBES
- SMART CONTROL
- SOLAR CONTROL GLASS
- EXTERIOR SHUTTERS
- COMMUNITY POOL
- COMMUNITY SPA
- COMMUNITY GYM
- AC/HEATING

XOJ



DATE: 29-10-25

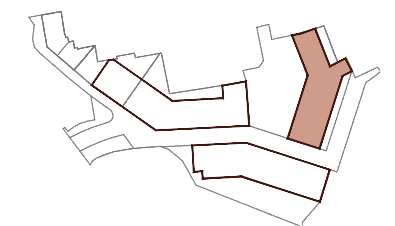
*This document is informative, it has not contractual value until the structure and installations are completely defined

**THIS DOCUMENT INCLUDING USABLE AREAS AND GROSS FLOOR AREAS IS ONLY TEMPORARY AND NOT FINAL DUE TO MUNICIPAL CHANGES AND CONSTRUCTION DESIGN



XOJONQUET

THE PARK RESIDENCES

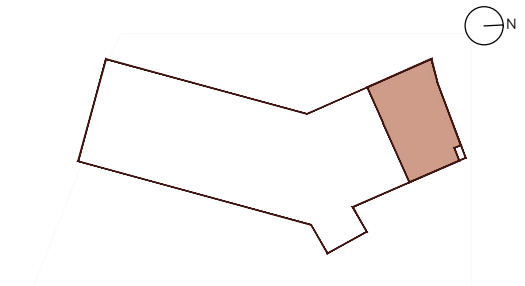
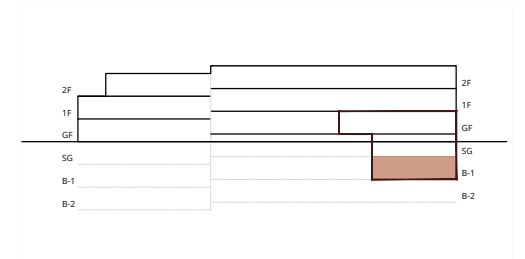
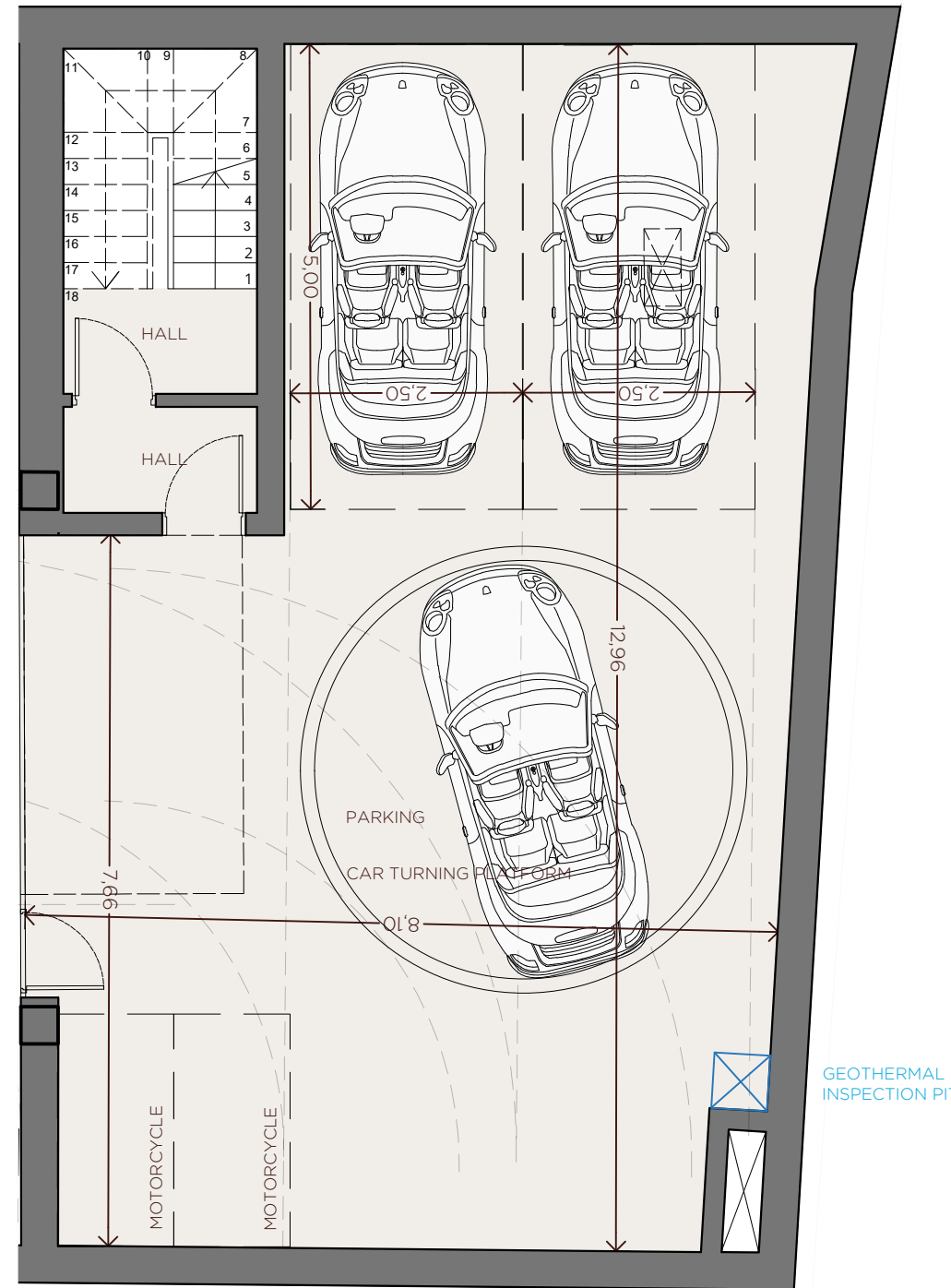


APARTMENT

1 M

XOJAY

*Access Easement for Geothermal Inspection Pit



1 M -APARTMENT-

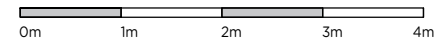
INDOOR USABLE FLOOR AREA	288,95
INDOOR GROSS FLOOR AREA	361,46
OUTDOOR GROSS FLOOR AREA	42,93
TOTAL GROSS FLOOR AREA	404,39
GFA + COMMON AREAS	502,09

1 M -USABLE FLOOR AREA-

ROOM	SURFACE
BASEMENT FLOOR -1	
HALL	2,35
HALL	2,37
PARKING	90,92

- KITCHEN
- WARDROBES
- SMART CONTROL
- SOLAR CONTROL GLASS
- EXTERIOR SHUTTERS
- COMMUNITY POOL
- COMMUNITY SPA
- COMMUNITY GYM
- AC/HEATING

XOJ



DATE: 29-10-25

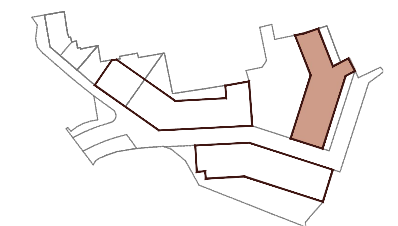
*This document is informative, it has not contractual value until the structure and installations are completely defined

**THIS DOCUMENT INCLUDING USABLE AREAS AND GROSS FLOOR AREAS IS ONLY TEMPORARY AND NOT FINAL DUE TO MUNICIPALY CHANGES AND CONSTRUCTION DESIGN



XOJONQUET

THE PARK RESIDENCES



APARTMENT

1 M