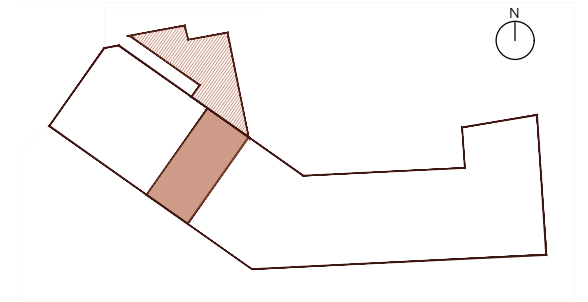
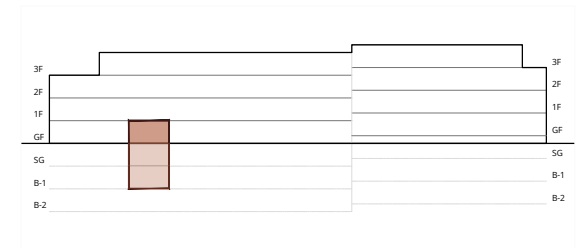
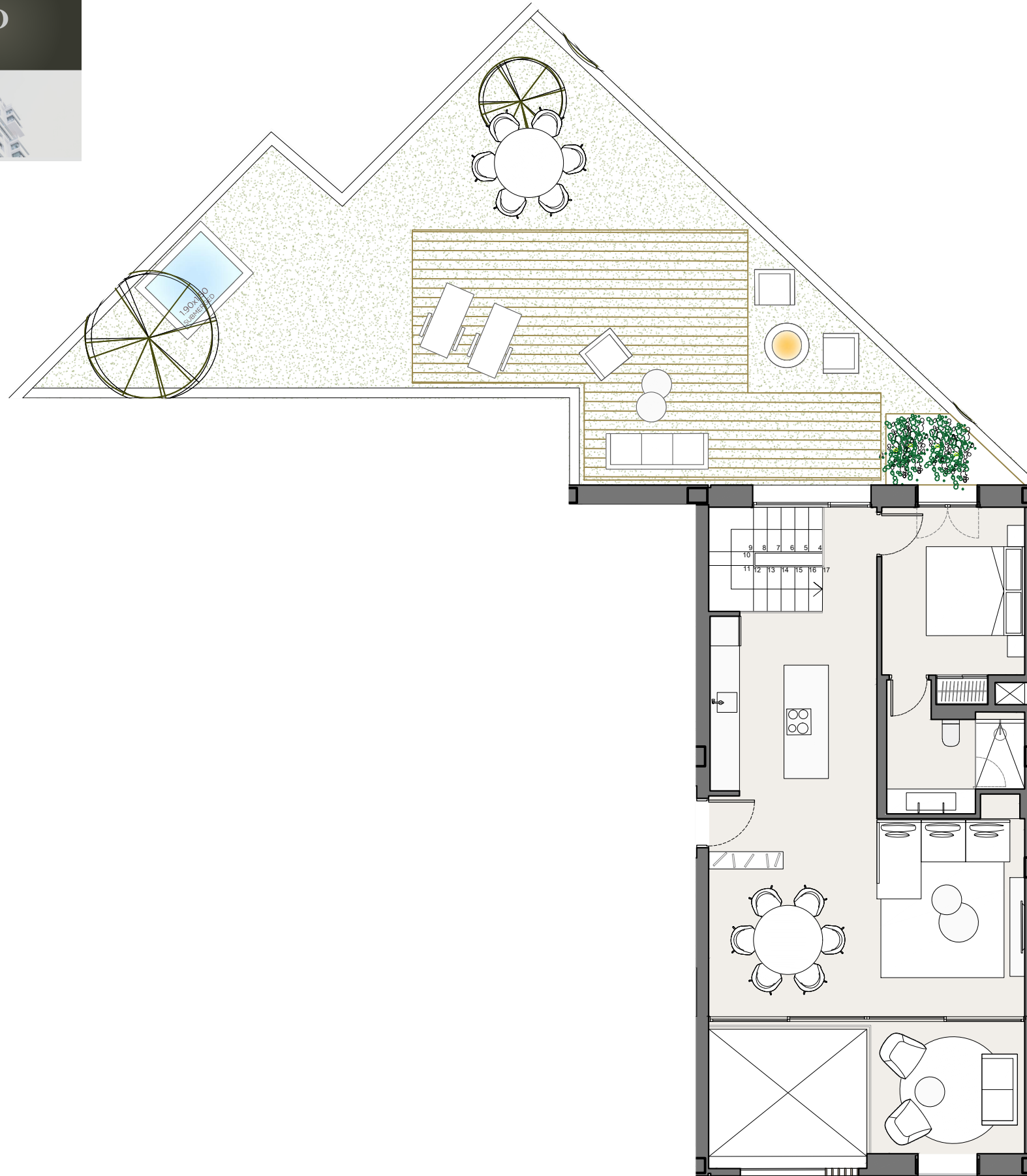


€ 2'975'000.00



1 C -APARTMENT-	
INDOOR USABLE FLOOR AREA	184,37
INDOOR GROSS FLOOR AREA	242,93
OUTDOOR GROSS FLOOR AREA	90,52
TOTAL GROSS FLOOR AREA	333,45
GFA + COMMON AREAS	414,01

- KITCHEN
- WARDROBES
- SMART CONTROL
- SOLAR CONTROL GLASS
- EXTERIOR SHUTTERS
- COMMUNITY POOL
- COMMUNITY SPA
- COMMUNITY GYM
- AC/HEATING

XOJ



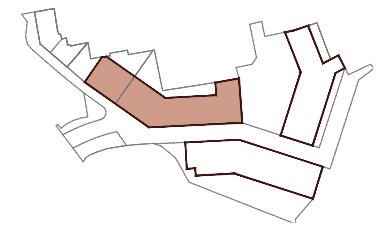
e 1:100 DATE: 29-10-25



*This document is informative, it has not contractual value until the structure and installations are completely defined

**THIS DOCUMENT INCLUDING USABLE AREAS AND GROSS FLOOR AREAS IS ONLY TEMPORARY AND NOT FINAL DUE TO MUNICIPALY CHANGES AND CONSTRUCTION DESIGN

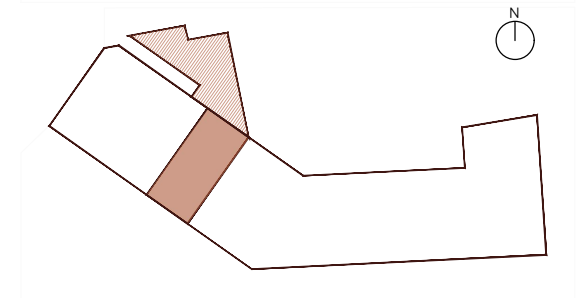
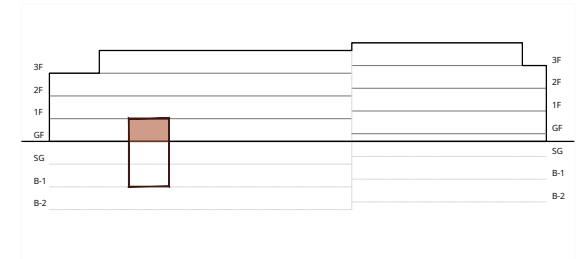
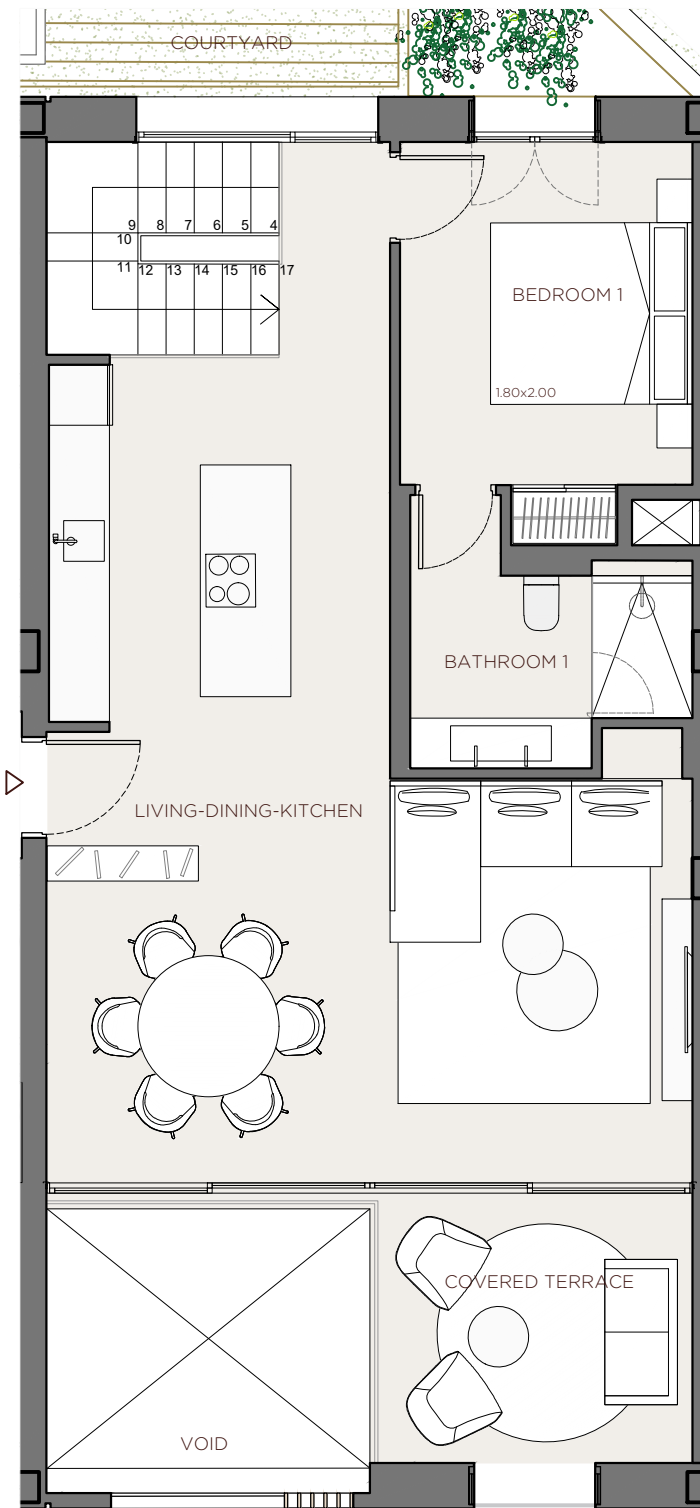
XOJONQUET
THE PARK RESIDENCES



APARTMENT

1 C

XOJAY



1 C -APARTMENT-

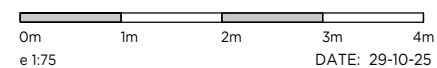
INDOOR USABLE FLOOR AREA	184,37
INDOOR GROSS FLOOR AREA	242,93
OUTDOOR GROSS FLOOR AREA	90,52
TOTAL GROSS FLOOR AREA	333,45
GFA + COMMON AREAS	414,01

1 C -USABLE FLOOR AREA-

ROOM	SURFACE
GROUND FLOOR	
LIVING-DINING-KITCHEN	42,49
BEDROOM 1	10,49
BATHROOM 1	5,72
COVERED TERRACE	8,56
COURTYARD	84,90

- KITCHEN
- WARDROBES
- SMART CONTROL
- SOLAR CONTROL GLASS
- EXTERIOR SHUTTERS
- COMMUNITY POOL
- COMMUNITY SPA
- COMMUNITY GYM
- AC/HEATING

XOJ

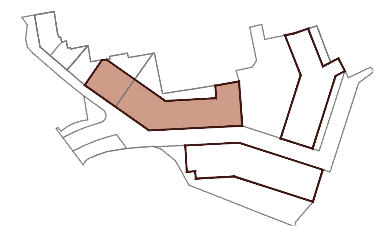


DATE: 29-10-25
e 1:75

*This document is informative, it has not contractual value until the structure and installations are completely defined
**THIS DOCUMENT INCLUDING USABLE AREAS AND GROSS FLOOR AREAS IS ONLY TEMPORARY AND NOT FINAL DUE TO MUNICIPALY CHANGES AND CONSTRUCTION DESIGN

XOJONQUET

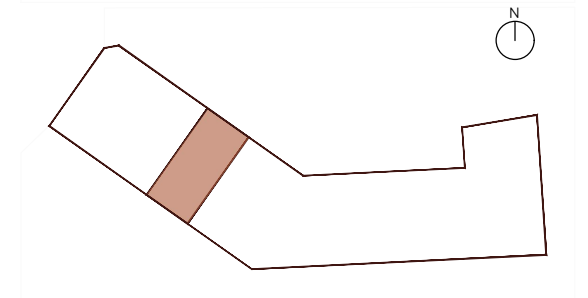
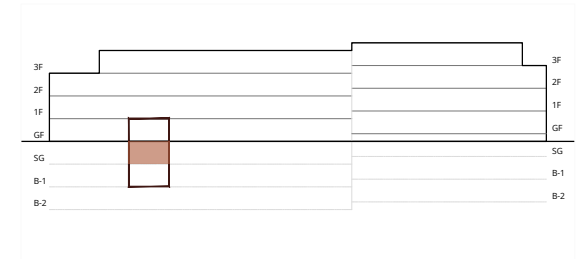
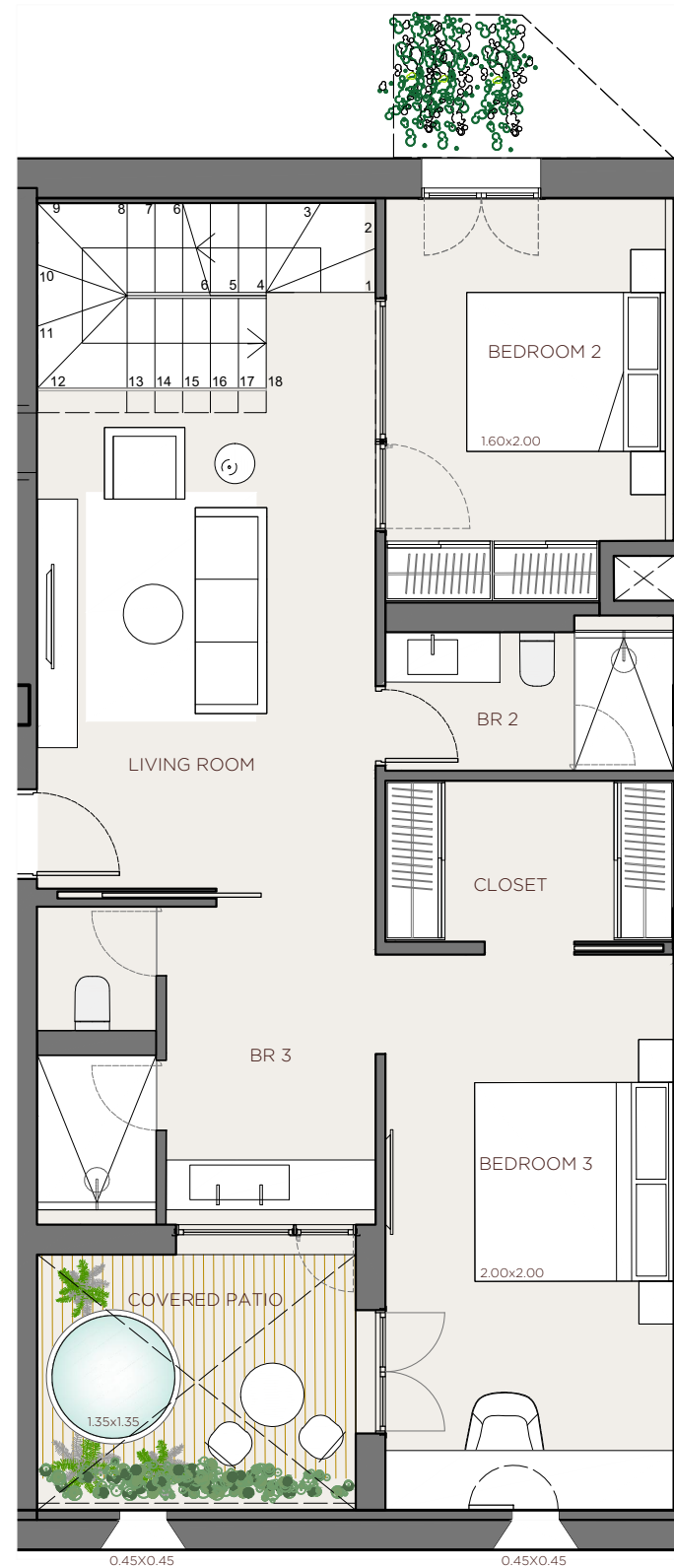
THE PARK RESIDENCES



APARTMENT

1 C

XOJAY



1 C -APARTMENT-

INDOOR USABLE FLOOR AREA	184,37
INDOOR GROSS FLOOR AREA	242,93
OUTDOOR GROSS FLOOR AREA	90,52
TOTAL GROSS FLOOR AREA	333,45
GFA + COMMON AREAS	414,01

1 C -USABLE FLOOR AREA-

ROOM	SURFACE
SEMI GROUND FLOOR	
LIVING ROOM	18,11
BEDROOM 2	11,32
BATHROOM 2	4,20
BEDROOM 3	16,30
BATHROOM 3	10,41
CLOSET	4,70
COVERED PATIO	8,59

- KITCHEN
- WARDROBES
- SMART CONTROL
- SOLAR CONTROL GLASS
- EXTERIOR SHUTTERS
- COMMUNITY POOL
- COMMUNITY SPA
- COMMUNITY GYM
- AC/HEATING

XOJ

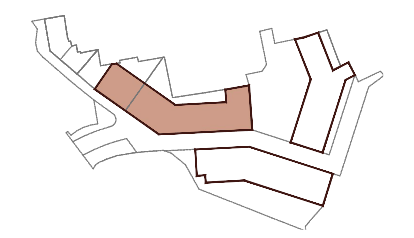


DATE: 29-10-25
e 1:75

*This document is informative, it has not contractual value until the structure and installations are completely defined
 **THIS DOCUMENT INCLUDING USABLE AREAS AND GROSS FLOOR AREAS IS ONLY TEMPORARY AND NOT FINAL DUE TO MUNICIPALY CHANGES AND CONSTRUCTION DESIGN

XOJONQUET

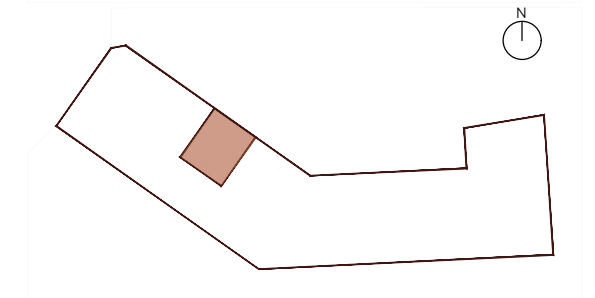
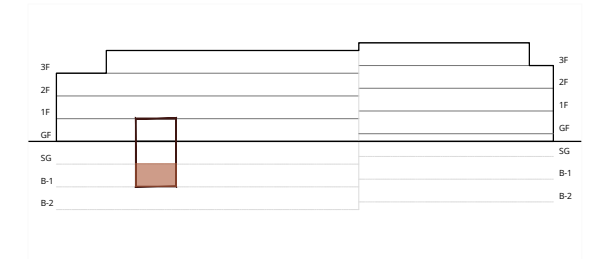
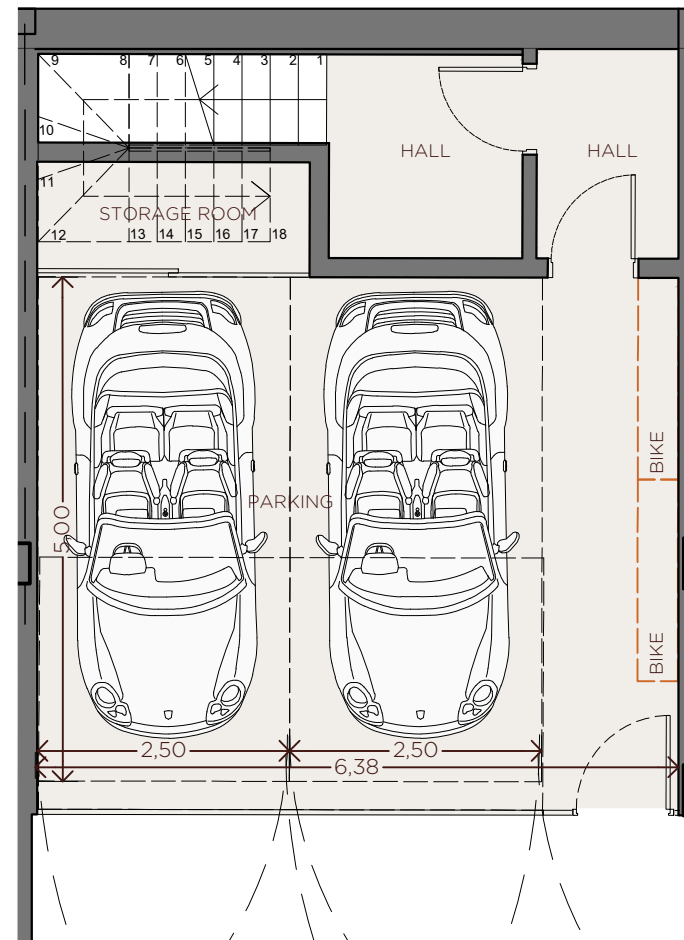
THE PARK RESIDENCES



APARTMENT

1 C

XOJAY



1 C -APARTMENT-

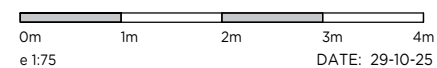
INDOOR USABLE FLOOR AREA	184,37
INDOOR GROSS FLOOR AREA	242,93
OUTDOOR GROSS FLOOR AREA	90,52
TOTAL GROSS FLOOR AREA	333,45
GFA + COMMON AREAS	414,01

1 C -USABLE FLOOR AREA-

ROOM	SURFACE
BASEMENT FLOOR -1	
HALL	3,88
HALL	2,92
PARKING	33,58
STORAGE ROOM	3,08

- KITCHEN
- WARDROBES
- SMART CONTROL
- SOLAR CONTROL GLASS
- EXTERIOR SHUTTERS
- COMMUNITY POOL
- COMMUNITY SPA
- COMMUNITY GYM
- AC/HEATING

XOJ

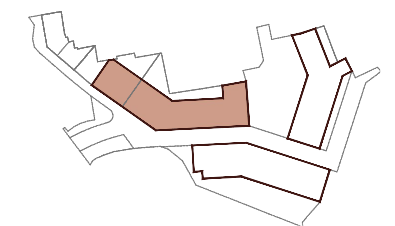


DATE: 29-10-25
e 1:75

*This document is informative, it has not contractual value until the structure and installations are completely defined
**THIS DOCUMENT INCLUDING USABLE AREAS AND GROSS FLOOR AREAS IS ONLY TEMPORARY AND NOT FINAL DUE TO MUNICIPALY CHANGES AND CONSTRUCTION DESIGN

XOJONQUET

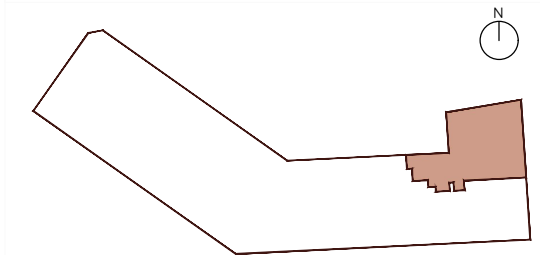
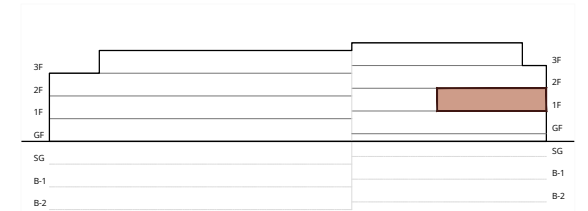
THE PARK RESIDENCES



APARTMENT

1 C

€ 1'950'000.00



2 G -APARTMENT-

INDOOR USABLE FLOOR AREA	100,33
INDOOR GROSS FLOOR AREA	122,36
OUTDOOR GROSS FLOOR AREA	0,00
TOTAL GROSS FLOOR AREA	122,36
GFA + COMMON AREAS	151,92

2 G -USABLE FLOOR AREA-

ROOM	SURFACE
HALL	2.90
LIVING-DINING-KITCHEN	36.76
COVERED TERRACE	9.96
BEDROOM 2	11.61
BATHROOM 2	5.29
BEDROOM 3	10.05
BATHROOM 3	3.61
BEDROOM 1	14.37
BATHROOM 1	4.15
HALLWAY	1.62

- KITCHEN
- WARDROBES
- SMART CONTROL
- SOLAR CONTROL GLASS
- EXTERIOR SHUTTERS
- COMMUNITY POOL
- COMMUNITY SPA
- COMMUNITY GYM
- AC/HEATING

XOJ

CMV

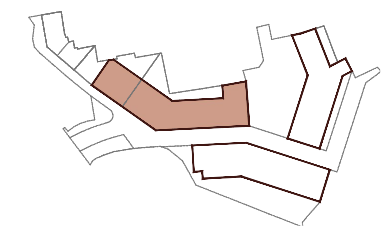


DATE: 29-10-25

*This document is informative, it has not contractual value until the structure and installations are completely defined

**THIS DOCUMENT INCLUDING USABLE AREAS AND GROSS FLOOR AREAS IS ONLY TEMPORARY AND NOT FINAL DUE TO MUNICIPAL CHANGES AND CONSTRUCTION DESIGN

XOJONQUET
THE PARK RESIDENCES

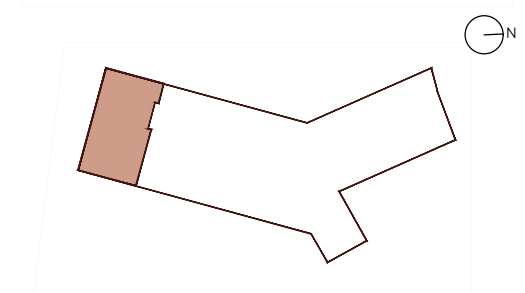
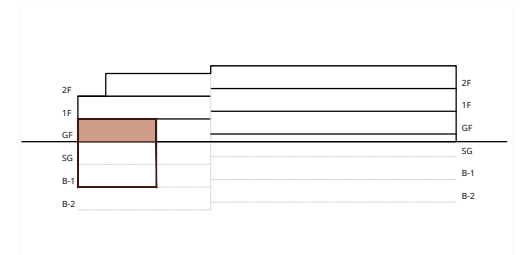
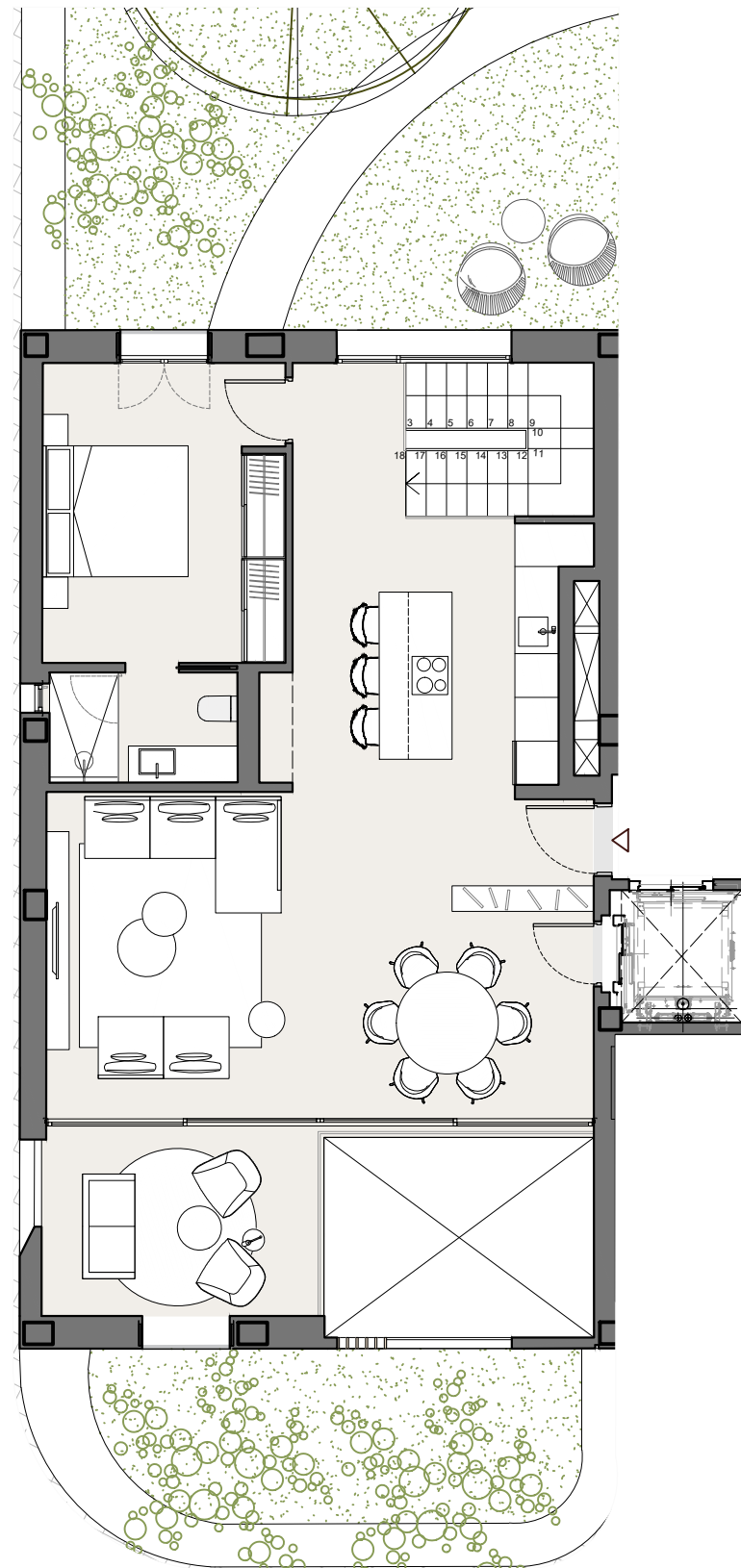


APARTMENT

2 G



€ 2'320'000.00



11 - APARTMENT -

INDOOR USABLE FLOOR AREA	221,67
INDOOR GROSS FLOOR AREA	290,32
OUTDOOR GROSS FLOOR AREA	0,00
TOTAL GROSS FLOOR AREA	290,32
GFA + COMMON AREAS	360,46

- KITCHEN
- WARDROBES
- SMART CONTROL
- SOLAR CONTROL GLASS
- EXTERIOR SHUTTERS
- COMMUNITY POOL
- COMMUNITY SPA
- COMMUNITY GYM
- AC/HEATING

XOJ



e 1:100

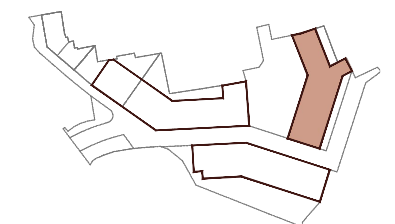
DATE: 29-10-25



*This document is informative, it has not contractual value until the structure and installations are completely defined

**THIS DOCUMENT INCLUDING USABLE AREAS AND GROSS FLOOR AREAS IS ONLY TEMPORARY AND NOT FINAL DUE TO MUNICIPALY CHANGES AND CONSTRUCTION DESIGN

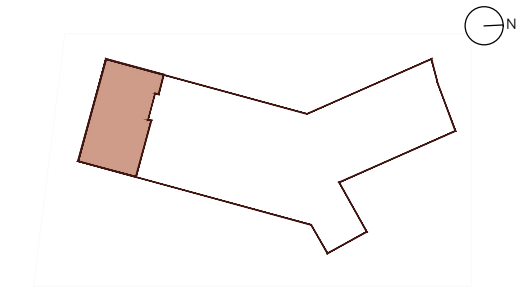
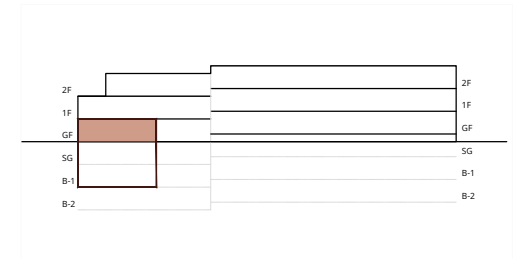
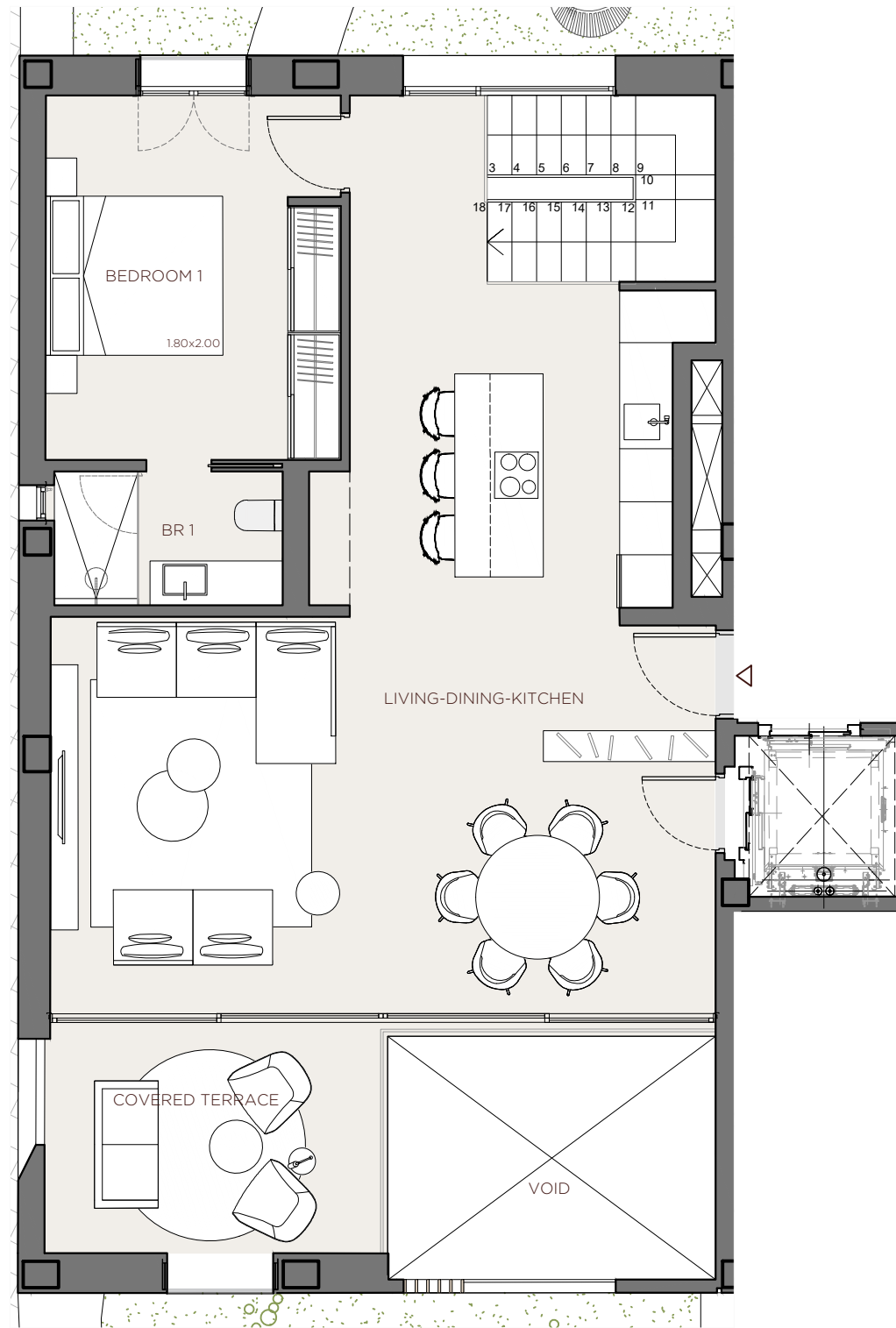
XOJONQUET
THE PARK RESIDENCES



APARTMENT

11

XOJAY



11 -APARTMENT-

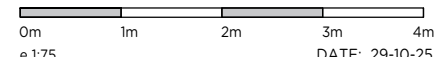
INDOOR USABLE FLOOR AREA	221,67
INDOOR GROSS FLOOR AREA	290,32
OUTDOOR GROSS FLOOR AREA	0,00
TOTAL GROSS FLOOR AREA	290,32
GFA + COMMON AREAS	360,46

11 -USABLE FLOOR AREA-

ROOM	SURFACE
GROUND FLOOR	
LIVING-DINING-KITCHEN	51,68
BEDROOM 1	13,71
BATHROOM 1	3,91
COVERED TERRACE	9,91

- KITCHEN
- WARDROBES
- SMART CONTROL
- SOLAR CONTROL GLASS
- EXTERIOR SHUTTERS
- COMMUNITY POOL
- COMMUNITY SPA
- COMMUNITY GYM
- AC/HEATING

XOJ

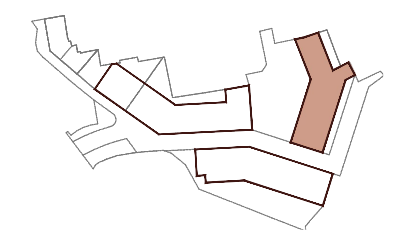


DATE: 29-10-25
e 1:75

*This document is informative, it has not contractual value until the structure and installations are completely defined
 **THIS DOCUMENT INCLUDING USABLE AREAS AND GROSS FLOOR AREAS IS ONLY TEMPORARY AND NOT FINAL DUE TO MUNICIPALY CHANGES AND CONSTRUCTION DESIGN

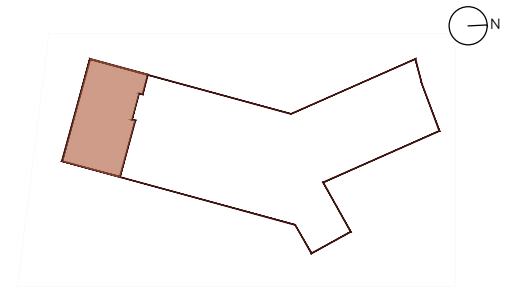
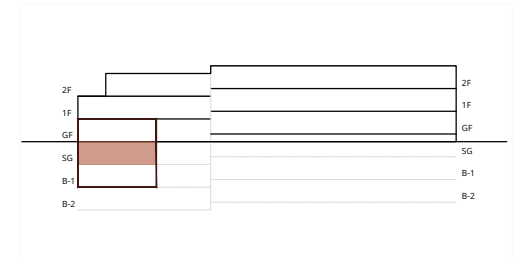
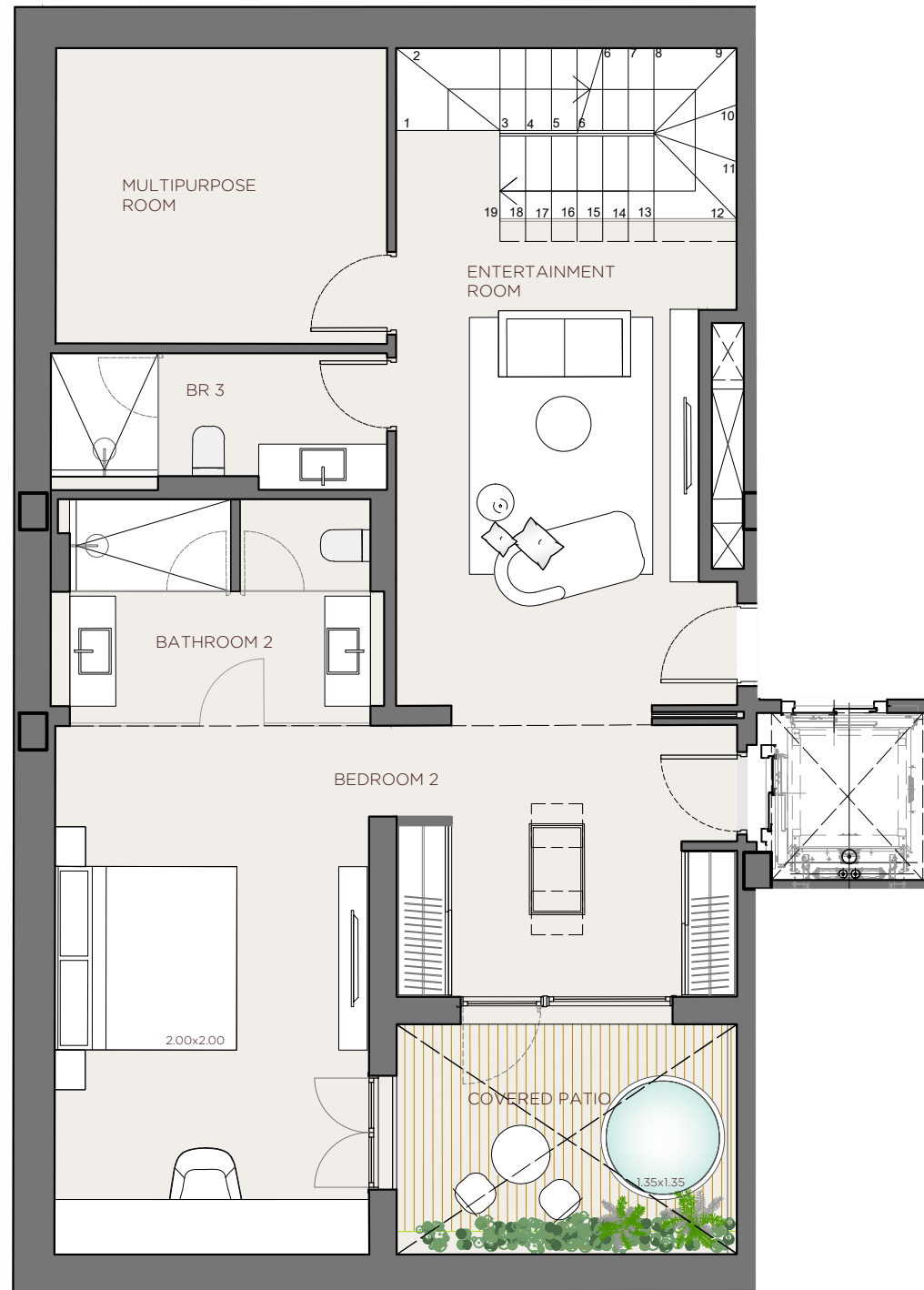
XOJONQUET

THE PARK RESIDENCES



APARTMENT

11



11 -APARTMENT-

INDOOR USABLE FLOOR AREA	221,67
INDOOR GROSS FLOOR AREA	290,32
OUTDOOR GROSS FLOOR AREA	0,00
TOTAL GROSS FLOOR AREA	290,32
GFA + COMMON AREAS	360,46

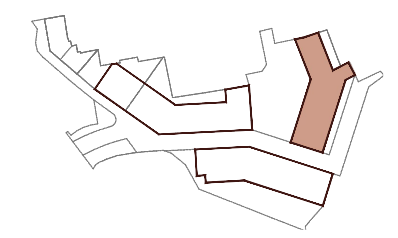
11 -USABLE FLOOR AREA-

ROOM	SURFACE
SEMI GROUND FLOOR	
ENTERTAINMENT ROOM	20,02
MULTIPURPOSE ROOM	11,99
BATHROOM 3	5,34
BEDROOM 2	31,21
BATHROOM 2	8,50
COVERED PATIO	9,31

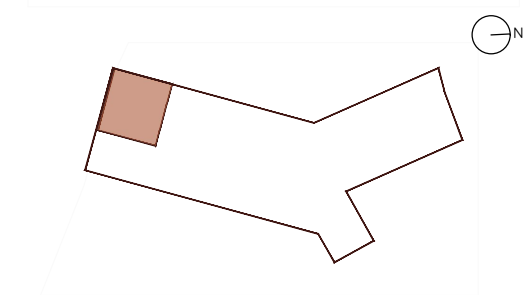
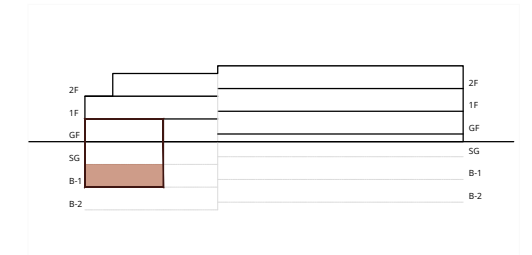
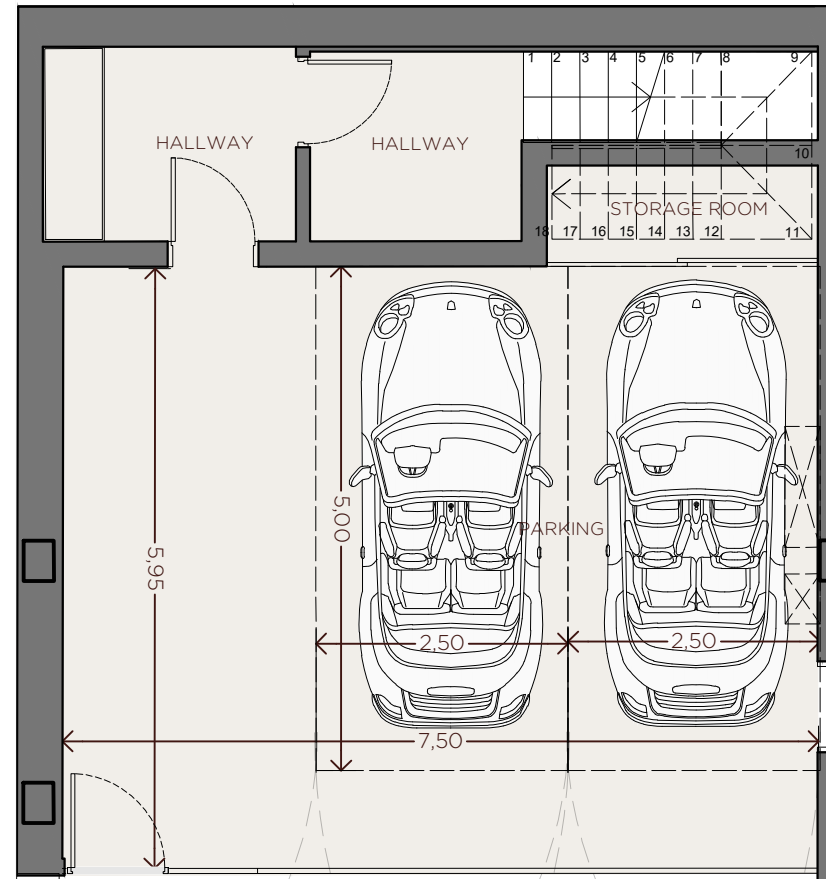
- KITCHEN
- WARDROBES
- SMART CONTROL
- SOLAR CONTROL GLASS
- EXTERIOR SHUTTERS
- COMMUNITY POOL
- COMMUNITY SPA
- COMMUNITY GYM
- AC/HEATING



*This document is informative, it has not contractual value until the structure and installations are completely defined
 **THIS DOCUMENT INCLUDING USABLE AREAS AND GROSS FLOOR AREAS IS ONLY TEMPORARY AND NOT FINAL DUE TO MUNICIPALY CHANGES AND CONSTRUCTION DESIGN



XOJAY



11 -APARTMENT-

INDOOR USABLE FLOOR AREA	221,67
INDOOR GROSS FLOOR AREA	290,32
OUTDOOR GROSS FLOOR AREA	0,00
TOTAL GROSS FLOOR AREA	290.32
GFA + COMMON AREAS	360.46

11 -USABLE FLOOR AREA-

ROOM	SURFACE
BASEMENT FLOOR -1	
HALL	3.95
HALL	4.85
PARKING	44.70
STORAGE ROOM	2.61

- KITCHEN
- WARDROBES
- SMART CONTROL
- SOLAR CONTROL GLASS
- EXTERIOR SHUTTERS
- COMMUNITY POOL
- COMMUNITY SPA
- COMMUNITY GYM
- AC/HEATING

XOJ



DATE: 29-10-25

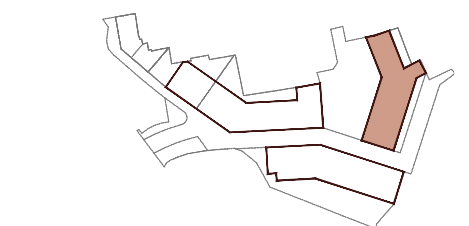
*This document is informative, it has not contractual value until the structure and installations are completely defined

**THIS DOCUMENT INCLUDING USABLE AREAS AND GROSS FLOOR AREAS IS ONLY TEMPORARY AND NOT FINAL DUE TO MUNICIPALY CHANGES AND CONSTRUCTION DESIGN



XOJONQUET

THE PARK RESIDENCES

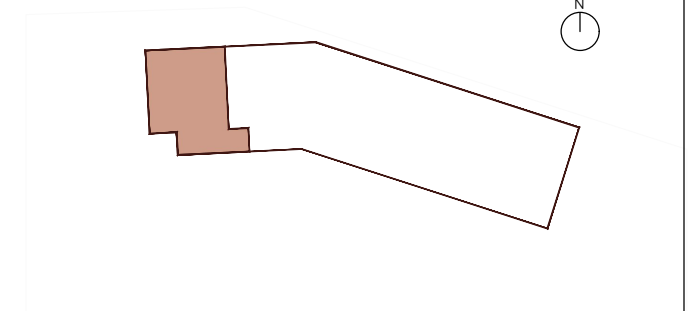
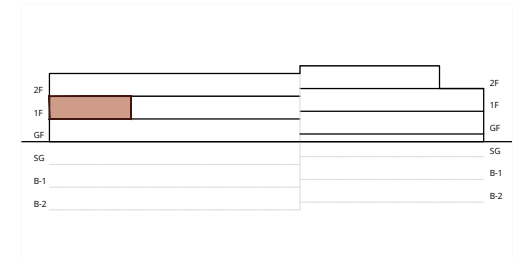


APARTMENT

11



€ 2'280'000.00



2 N -APARTMENT-

INDOOR USABLE FLOOR AREA	123,09
INDOOR GROSS FLOOR AREA	144,35
OUTDOOR GROSS FLOOR AREA	0,00
TOTAL GROSS FLOOR AREA	144,35
GFA + COMMON AREAS	179,22

2 N -USABLE FLOOR AREA-

ROOM	SURFACE
LIVING-DINING-KITCHEN	41,73
HALLWAY	6,26
BEDROOM 3	10,52
BEDROOM 2	8,26
BATHROOM 2	4,00
BATHROOM 3	4,63
BEDROOM 1	14,74
BATHROOM 1	4,95
COVERED TERRACE	27,99

- KITCHEN
- WARDROBES
- SMART CONTROL
- SOLAR CONTROL GLASS
- EXTERIOR SHUTTERS
- COMMUNITY POOL
- COMMUNITY SPA
- COMMUNITY GYM
- AC/HEATING

XOJ

CMV

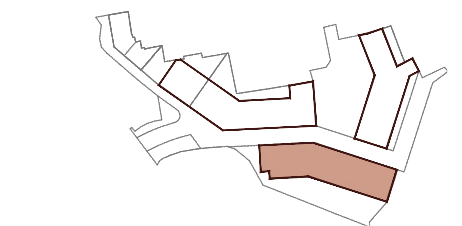


DATE: 29-10-25

*This document is informative, it has not contractual value until the structure and installations are completely defined

**THIS DOCUMENT INCLUDING USABLE AREAS AND GROSS FLOOR AREAS IS ONLY TEMPORARY AND NOT FINAL DUE TO MUNICIPAL CHANGES AND CONSTRUCTION DESIGN

XOJONQUET
THE PARK RESIDENCES



APARTMENT

2 N