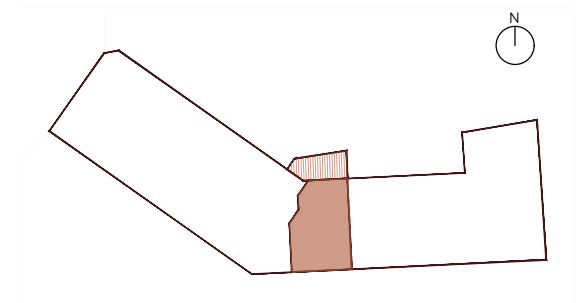
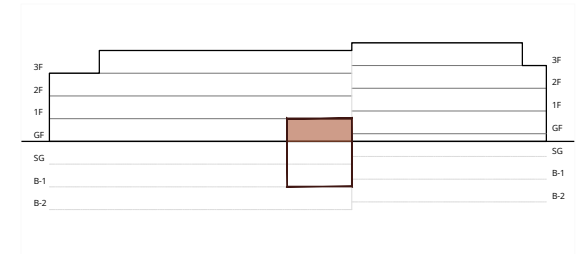
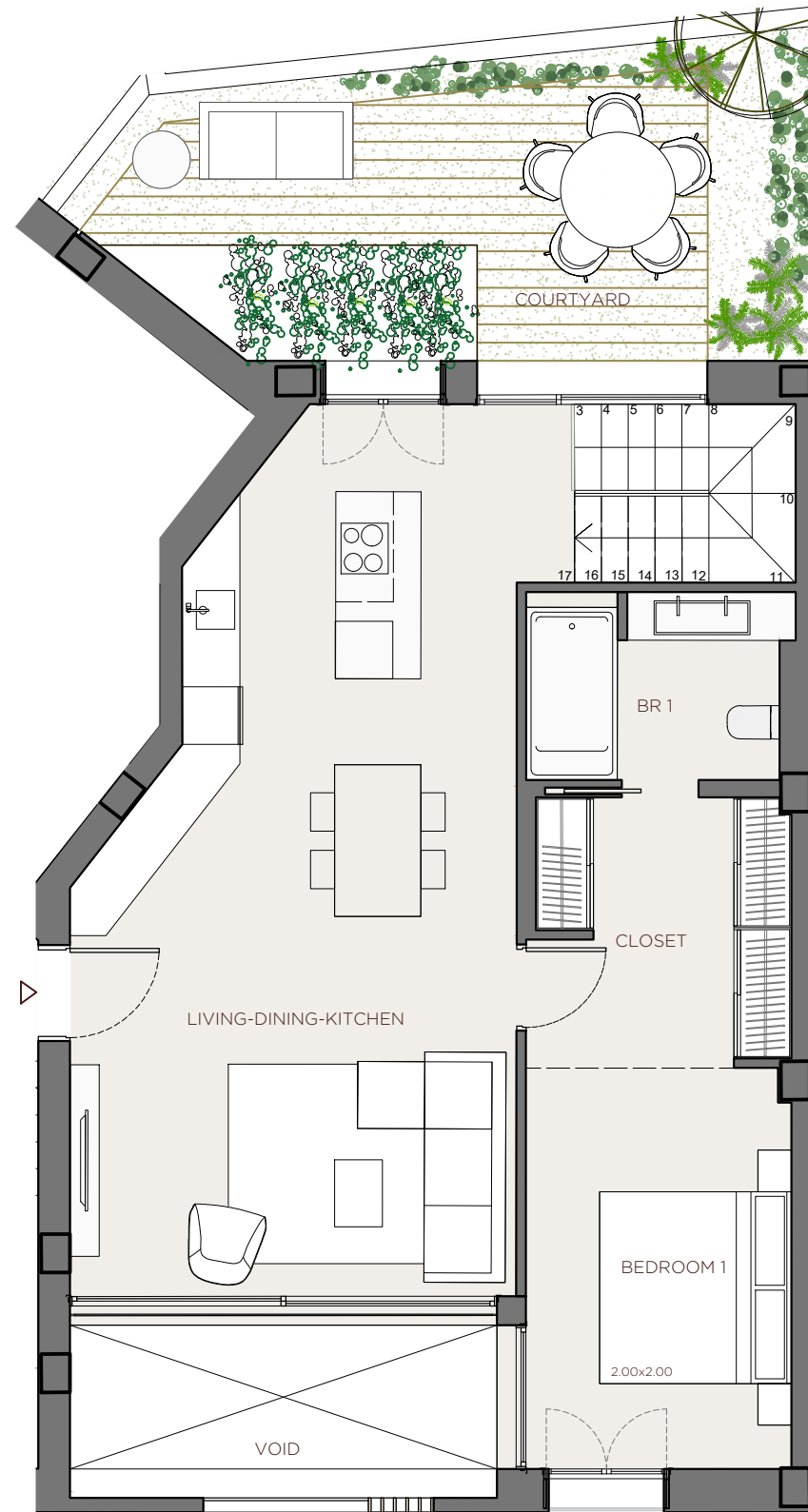




€ 2'360'000.00



1 E -APARTMENT-

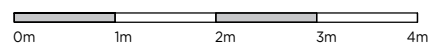
INDOOR USABLE FLOOR AREA	202,08
INDOOR GROSS FLOOR AREA	263,34
OUTDOOR GROSS FLOOR AREA	23,83
TOTAL GROSS FLOOR AREA	287,17
GFA + COMMON AREAS	356,55

1 E -USABLE FLOOR AREA-

ROOM	SURFACE
GROUND FLOOR	
LIVING-DINING-KITCHEN	38,26
BEDROOM 1	11,52
BATHROOM 1	5,20
CLOSET	7,52
COURTYARD	22,17

- KITCHEN
- WARDROBES
- SMART CONTROL
- SOLAR CONTROL GLASS
- EXTERIOR SHUTTERS
- COMMUNITY POOL
- COMMUNITY SPA
- COMMUNITY GYM
- AC/HEATING

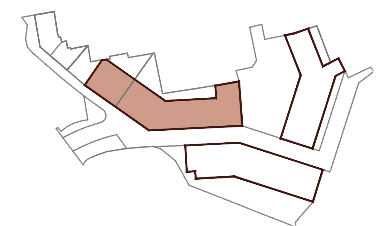
XOJ



DATE: 29-10-25
e 1:75

*This document is informative, it has not contractual value until the structure and installations are completely defined
**THIS DOCUMENT INCLUDING USABLE AREAS AND GROSS FLOOR AREAS IS ONLY TEMPORARY AND NOT FINAL DUE TO MUNICIPAL CHANGES AND CONSTRUCTION DESIGN

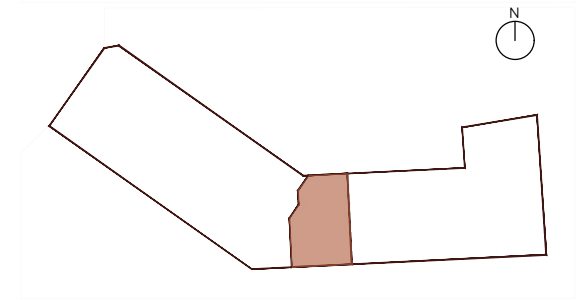
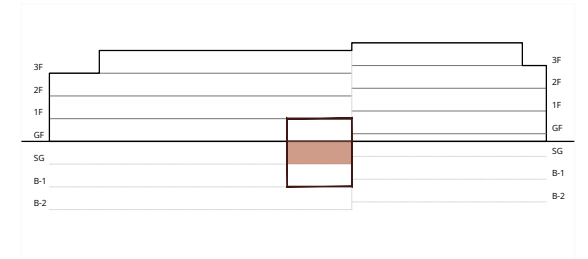
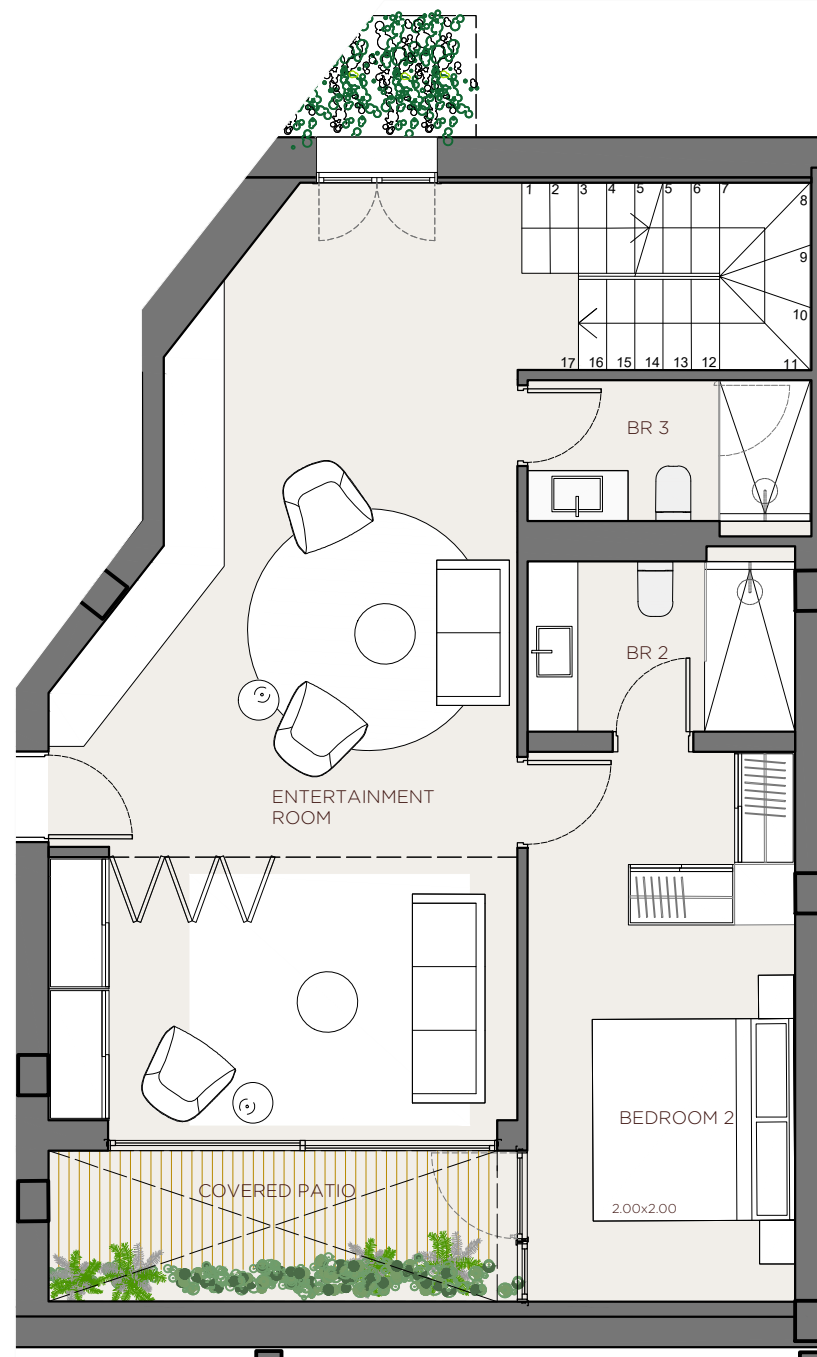
XOJONQUET
THE PARK RESIDENCES



APARTMENT

1 E

XOJAY

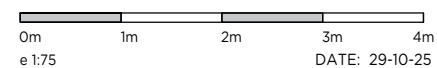


1 E -APARTMENT-	
INDOOR USABLE FLOOR AREA	202,08
INDOOR GROSS FLOOR AREA	263,34
OUTDOOR GROSS FLOOR AREA	23,83
TOTAL GROSS FLOOR AREA	287,17
GFA + COMMON AREAS	356,55

1 E -USABLE FLOOR AREA-	
ROOM	SURFACE
SEMI GROUND FLOOR	
ENTERTAINMENT ROOM	37,70
BATHROOM 3	4,07
BEDROOM 2	14,49
BATHROOM 2	4,62
COVERED PATIO	4,07

- KITCHEN
- WARDROBES
- SMART CONTROL
- SOLAR CONTROL GLASS
- EXTERIOR SHUTTERS
- COMMUNITY POOL
- COMMUNITY SPA
- COMMUNITY GYM
- AC/HEATING

XOJ

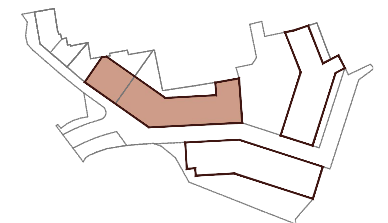


*This document is informative, it has not contractual value until the structure and installations are completely defined

**THIS DOCUMENT INCLUDING USABLE AREAS AND GROSS FLOOR AREAS IS ONLY TEMPORARY AND NOT FINAL DUE TO MUNICIPALY CHANGES AND CONSTRUCTION DESIGN

XOJONQUET

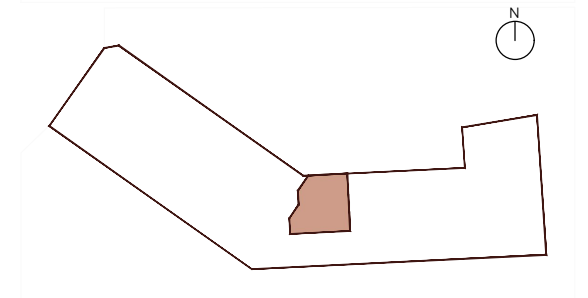
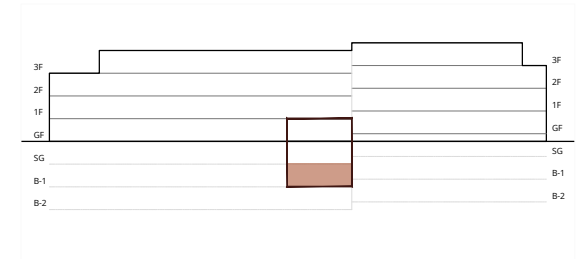
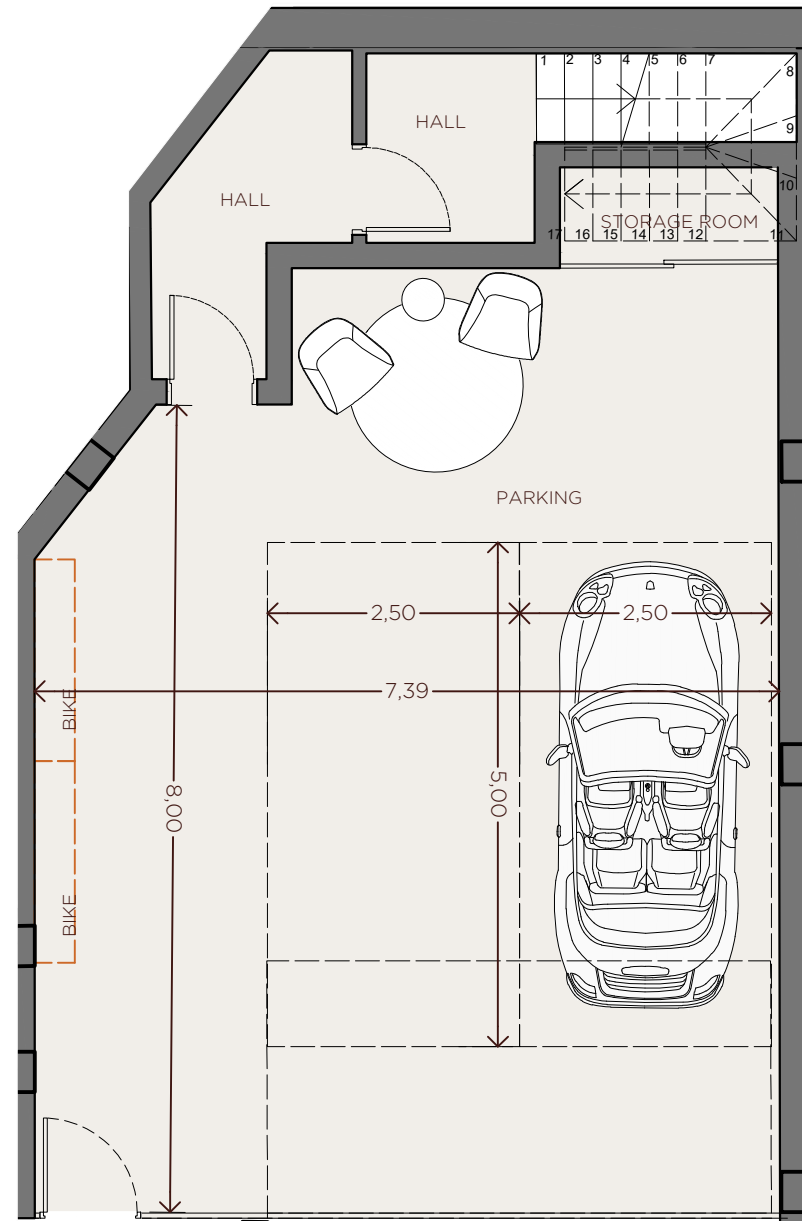
THE PARK RESIDENCES



APARTMENT

1 E

XOJAY

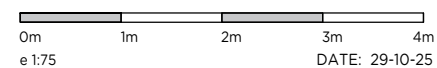


1 E -APARTMENT-	
INDOOR USABLE FLOOR AREA	202,08
INDOOR GROSS FLOOR AREA	263,34
OUTDOOR GROSS FLOOR AREA	23,83
TOTAL GROSS FLOOR AREA	287,17
GFA + COMMON AREAS	356,55

1 E -USABLE FLOOR AREA-	
ROOM	SURFACE
BASEMENT FLOOR -1	
HALL	3,14
HALL	4,48
PARKING	64,83
STORAGE ROOM	2,17

- KITCHEN
- WARDROBES
- SMART CONTROL
- SOLAR CONTROL GLASS
- EXTERIOR SHUTTERS
- COMMUNITY POOL
- COMMUNITY SPA
- COMMUNITY GYM
- AC/HEATING

XOJ

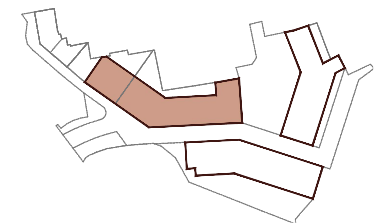


*This document is informative, it has not contractual value until the structure and installations are completely defined

**THIS DOCUMENT INCLUDING USABLE AREAS AND GROSS FLOOR AREAS IS ONLY TEMPORARY AND NOT FINAL DUE TO MUNICIPALY CHANGES AND CONSTRUCTION DESIGN

XOJONQUET

THE PARK RESIDENCES

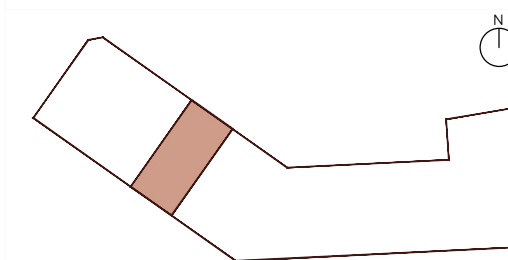
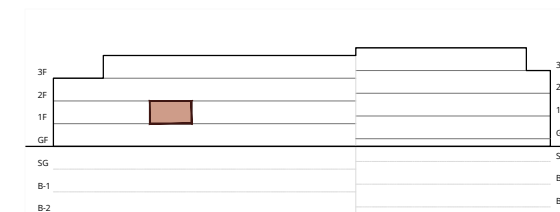
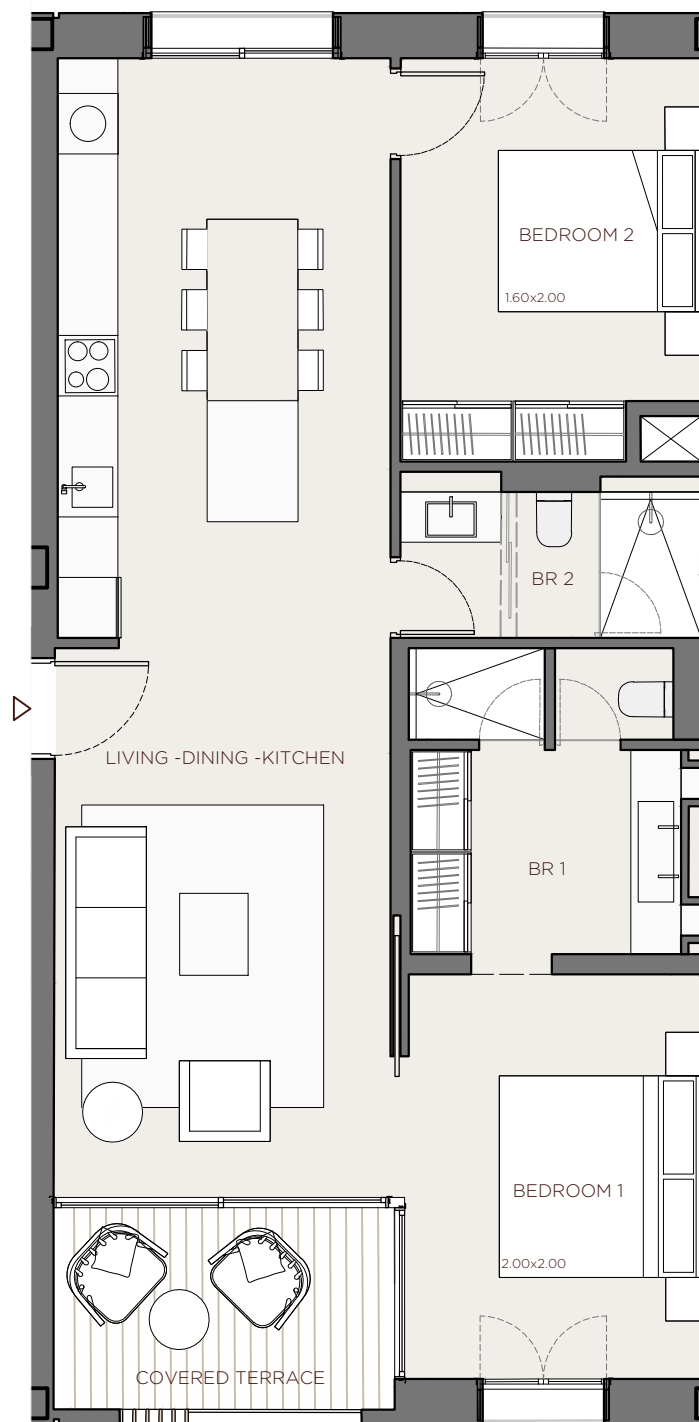


APARTMENT

1 E



€ 1'320'000.00



2 C -APARTMENT-

INDOOR USABLE FLOOR AREA	80,33
INDOOR GROSS FLOOR AREA	94,75
OUTDOOR GROSS FLOOR AREA	0,00
TOTAL GROSS FLOOR AREA	94,75
GFA + COMMON AREAS	117,64

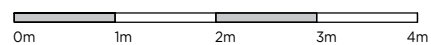
2 C -USABLE FLOOR AREA-

ROOM	SURFACE
LIVING-DINING-KITCHEN	37,53
BEDROOM 2	11,47
BATHROOM 2	4,67
BEDROOM 1	11,97
BATHROOM 1	7,98
COVERED TERRACE	6,72

- KITCHEN
- WARDROBES
- SMART CONTROL
- SOLAR CONTROL GLASS
- EXTERIOR SHUTTERS
- COMMUNITY POOL
- COMMUNITY SPA
- COMMUNITY GYM
- AC/HEATING

XOJ

CMV

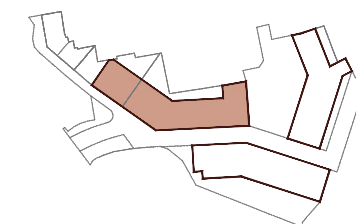


DATE: 29-10-25

*This document is informative, it has not contractual value until the structure and installations are completely defined

**THIS DOCUMENT INCLUDING USABLE AREAS AND GROSS FLOOR AREAS IS ONLY TEMPORARY AND NOT FINAL DUE TO MUNICIPAL CHANGES AND CONSTRUCTION DESIGN

XOJONQUET
THE PARK RESIDENCES

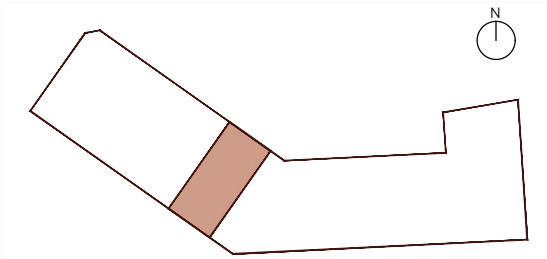
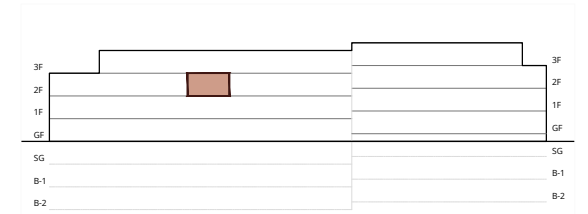
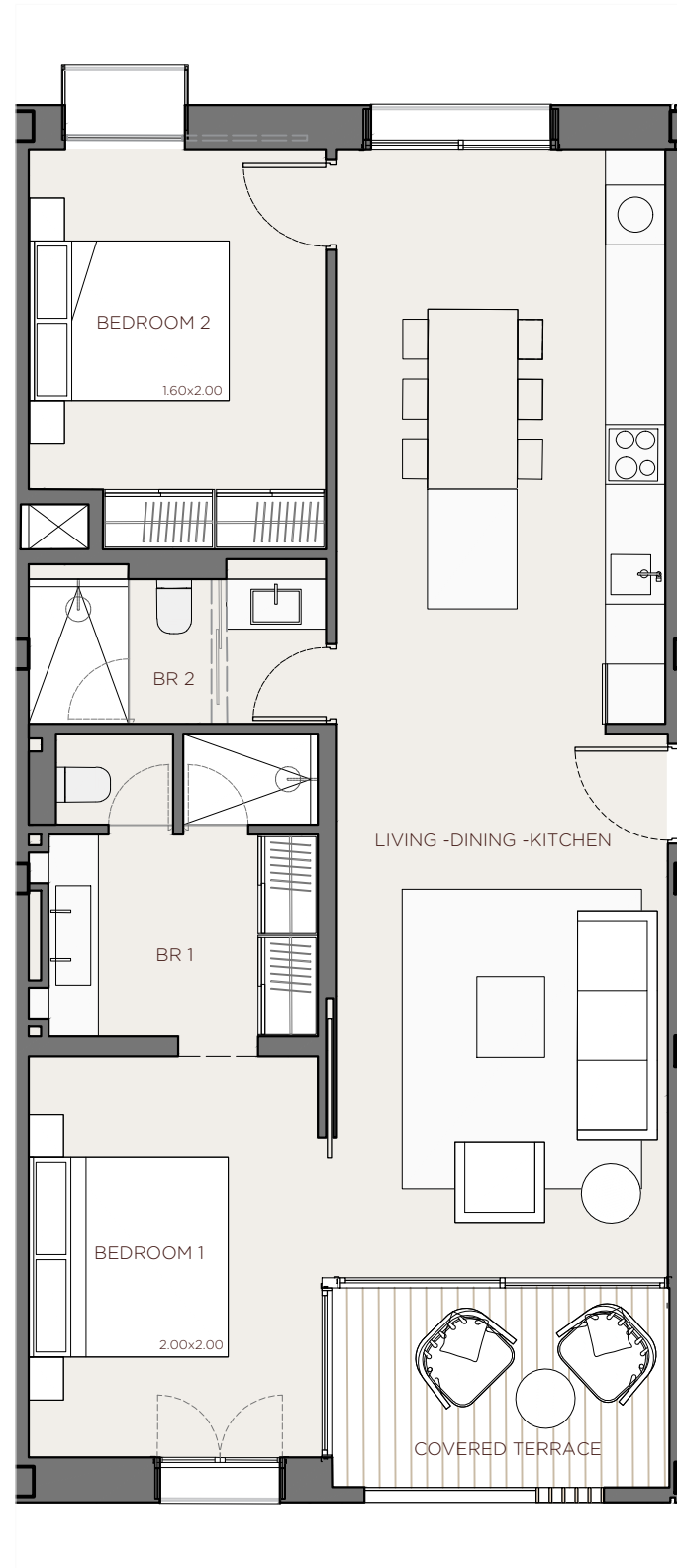


APARTMENT

2 C



€ 1'550'000.00



3 D -APARTMENT-

INDOOR USABLE FLOOR AREA	80,10
INDOOR GROSS FLOOR AREA	94,75
OUTDOOR GROSS FLOOR AREA	0,00
TOTAL GROSS FLOOR AREA	94,75
GFA + COMMON AREAS	117,64

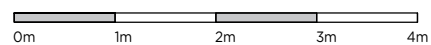
3 D -USABLE FLOOR AREA-

ROOM	SURFACE
LIVING-DINING-KITCHEN	37,39
BEDROOM 2	11,47
BATHROOM 2	4,67
BEDROOM 1	11,97
BATHROOM 1	8,01
COVERED TERRACE	6,60

- KITCHEN
- WARDROBES
- SMART CONTROL
- SOLAR CONTROL GLASS
- EXTERIOR SHUTTERS
- COMMUNITY POOL
- COMMUNITY SPA
- COMMUNITY GYM
- AC/HEATING

XOJ

CMV

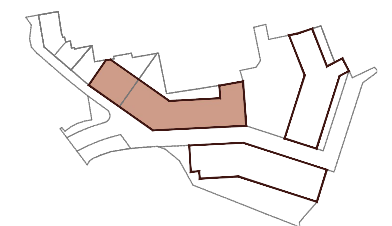


DATE: 29-10-25

*This document is informative, it has not contractual value until the structure and installations are completely defined

**THIS DOCUMENT INCLUDING USABLE AREAS AND GROSS FLOOR AREAS IS ONLY TEMPORARY AND NOT FINAL DUE TO MUNICIPAL CHANGES AND CONSTRUCTION DESIGN

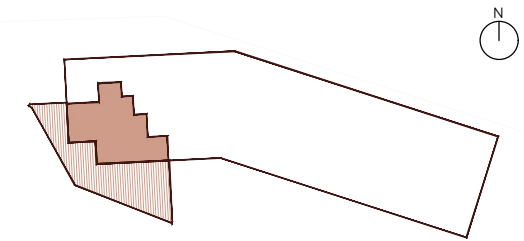
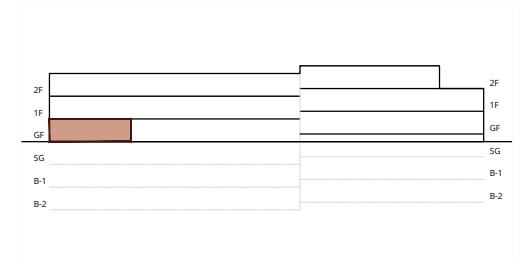
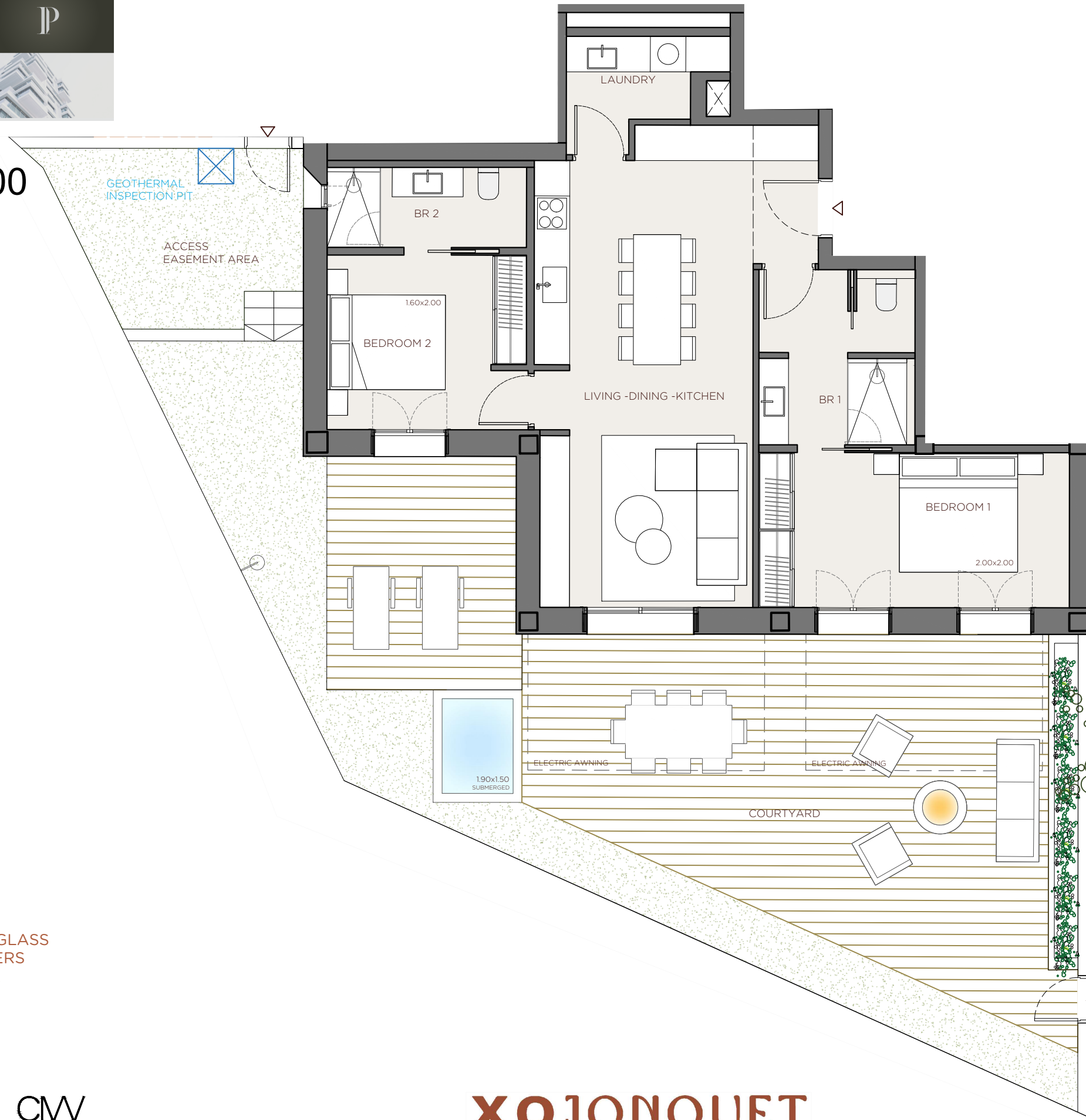
XOJONQUET
THE PARK RESIDENCES



APARTMENT

3 D

€ 1'930'000.00



1 N -APARTMENT-

INDOOR USABLE FLOOR AREA	70,78
INDOOR GROSS FLOOR AREA	87,37
OUTDOOR GROSS FLOOR AREA	105,16
TOTAL GROSS FLOOR AREA	192,53
GFA + COMMON AREAS	239,05

1 N -USABLE FLOOR AREA-

ROOM	SURFACE
HALL	2,58
LIVING-DINING-KITCHEN	28,72
LAUNDRY	3,97
BEDROOM 2	9,90
BATHROOM 2	4,56
BEDROOM 1	13,65

COURTYARD	86,40
*ACCESS EASEMENT AREA	12,88

- KITCHEN
- WARDROBES
- SMART CONTROL
- SOLAR CONTROL GLASS
- EXTERIOR SHUTTERS
- COMMUNITY POOL
- COMMUNITY SPA
- COMMUNITY GYM
- AC/HEATING

XOJ **CMV**

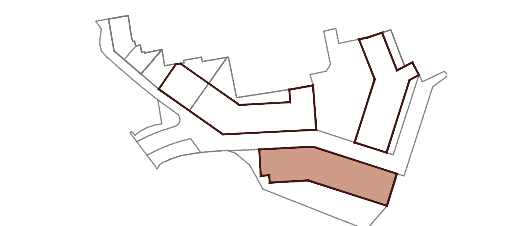
0m 1m 2m 3m 4m

DATE: 29-10-25

e 1:75

N

XOJONQUET
THE PARK RESIDENCES



APARTMENT **1 N**

*This document is informative, it has not contractual value until the structure and installations are completely defined

**THIS DOCUMENT INCLUDING USABLE AREAS AND GROSS FLOOR AREAS IS ONLY TEMPORARY AND NOT FINAL DUE TO MUNICIPAL CHANGES AND CONSTRUCTION DESIGN